

Keep the U.S. safe from Rinderpest



Rinderpest virus, genus Morbillivirus



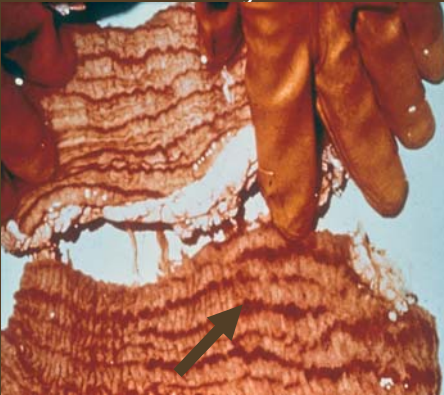
Mortality rates are high with an incubation period of 2-12 days



Diarrhea



Poor body condition



"tiger striping" of colon

Clinical signs:
fever, nasal/ocular discharge, diarrhea, and sudden death in animals of all ages



Lacrimation, nasal and ocular discharge are key clinical signs

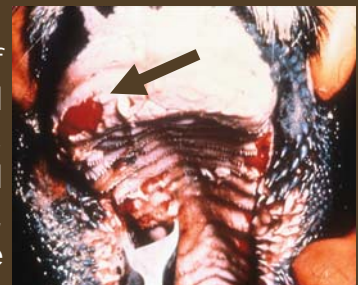


Excessive salivation results from oral lesions

Rinderpest (RP) is transmitted through the secretions of nasal and ocular discharges, feces, contaminated water, or direct contact with infected animals



Lesions of the dental pad, buccal mucosa, tongue and gums



Good surveillance will control RP

Geoffrey T. Fosgate DVM, PhD, DACVPM (979) 845-3203

For more information contact the Texas Animal Health Commission at 1-800-550-8242

Images for poster acquired from http://www.vet.uga.edu/vpp/gray_book/ and <http://www.fao.org>