



RINDERPEST

Susceptible Species

- Cattle
- Sheep
- Goats
- Swine

Clinical Manifestations

- High biphasic fever
- Depression
- Nasal discharges with foul odor
- Mucopurulent conjunctivitis, corneal opacity, photophobia, ocular discharges
- Diarrhea
- Dehydration
- Inflammation and necrosis of buccal papillae, lips, pain and discomfort in mouth
- Excessive salivation
- Erosions near teeth with eventual epithelial sloughing
- Erosions on the ventral surface of the tongue
- Erosions of the digestive tract
- Death – Most lethal

Differential Diagnosis

- BVD – mucosal disease complex
- IBR
- MCF
- Bluetongue/EHD
- Vesicular diseases (FMD, VS)
- Mycotic Stomatitis

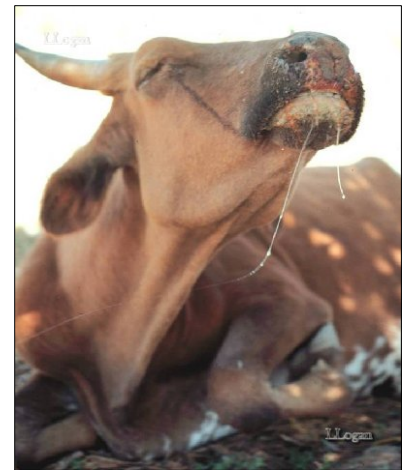


Photo by Dr Linda Logan

**ALERT
CALL
TAHC 800 550-8242
USDA 512-383-2400**

**EXERCISE
PERIMETER
CONTROL
MEASURES**

Incubation Period

3-15 days

Disease duration

14 days

Vaccine

Yes



Image provided by USDA

*Recognizing Foreign Animal Diseases
Produced by Dr Jeffrey Musser and
Dr Suzanne Burnham TAMU/CVM
Funded by DHS 2005*