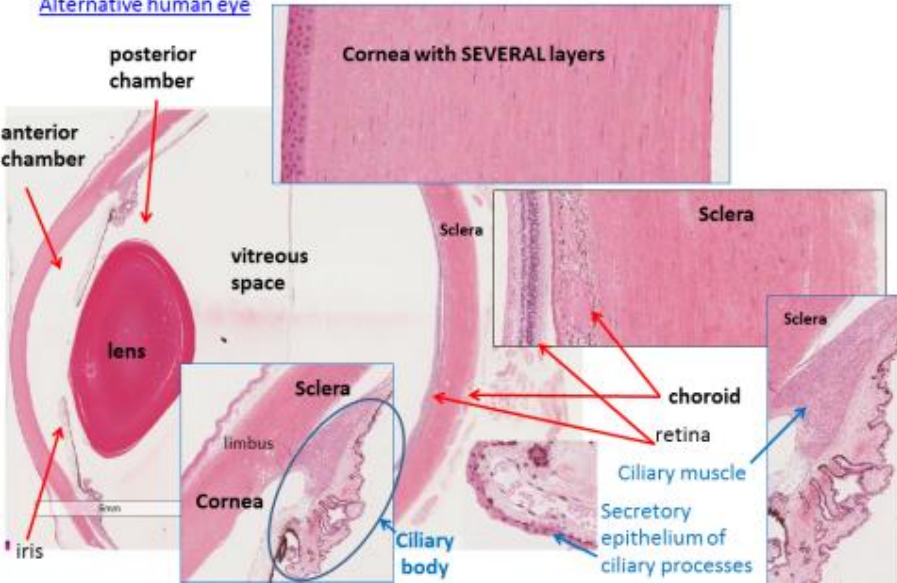


EYE

Larry Johnson

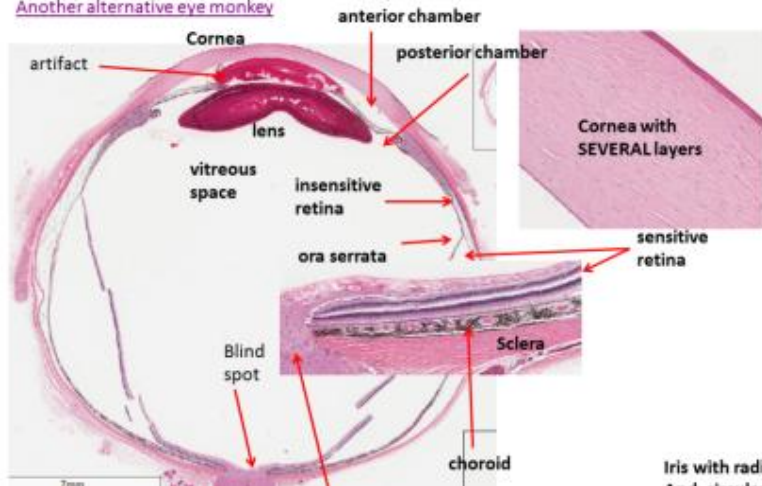
DEMO SLIDE BOX 23 Commercial slide. Eye, monkey

Alternative human eye



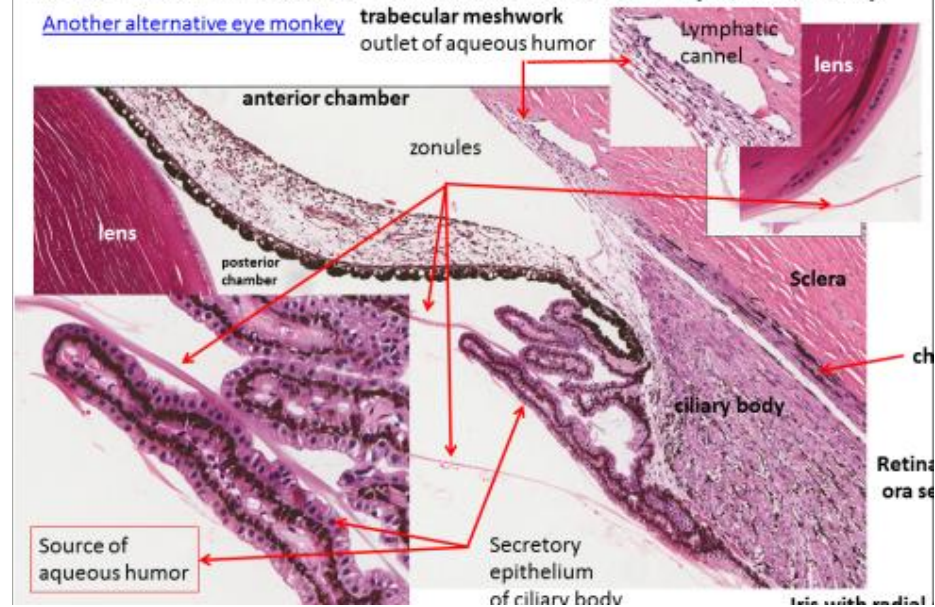
DEMO SLIDE BOX 23 Commercial slide. Eye, monkey

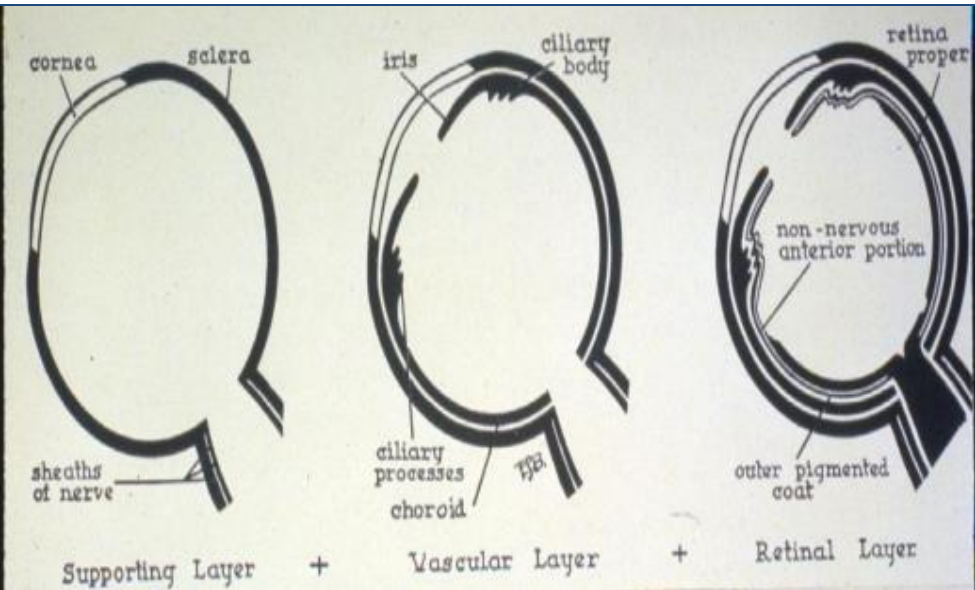
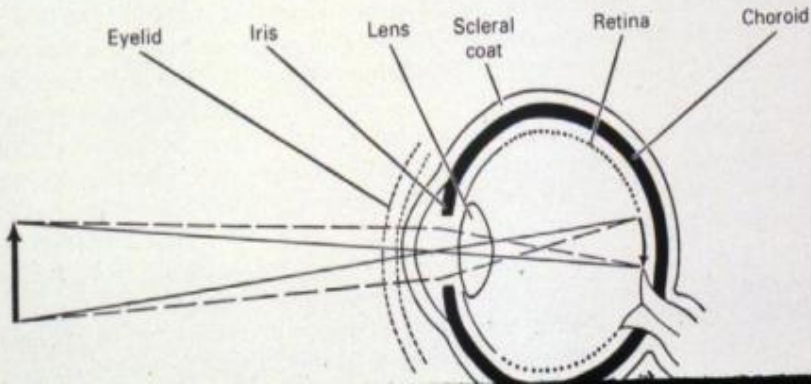
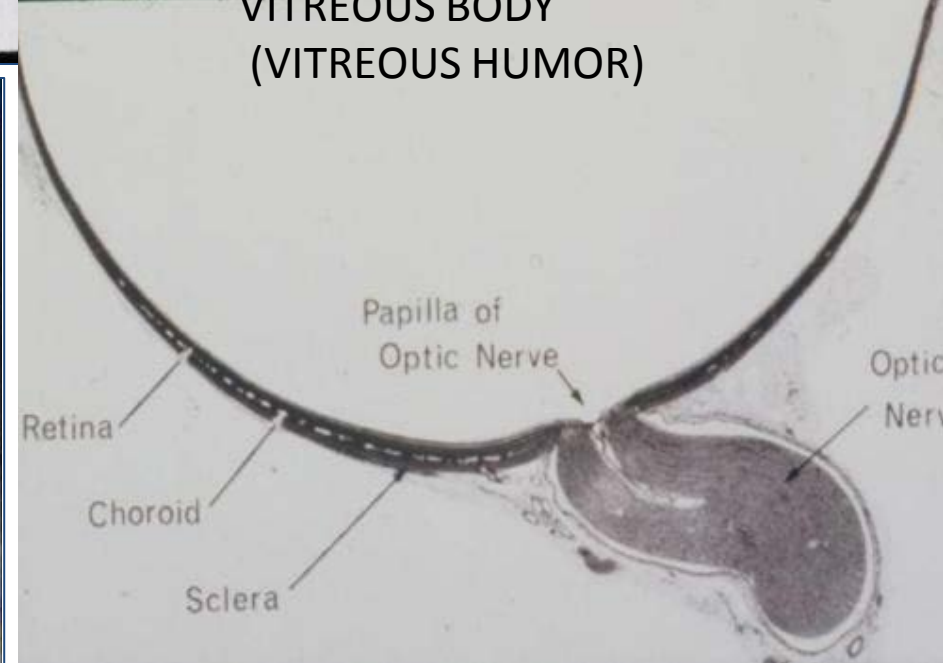
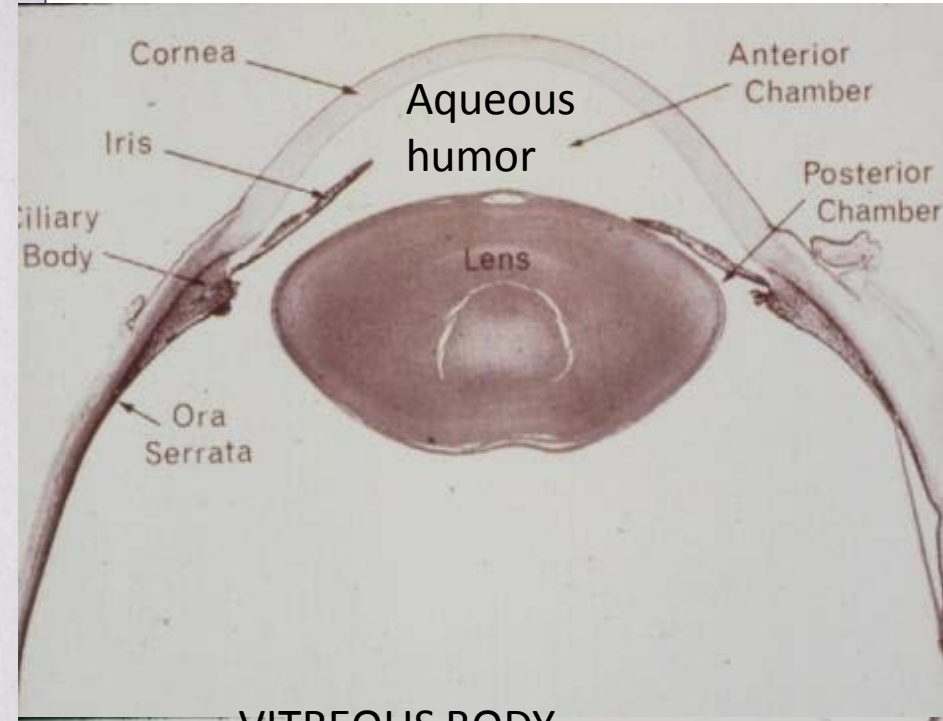
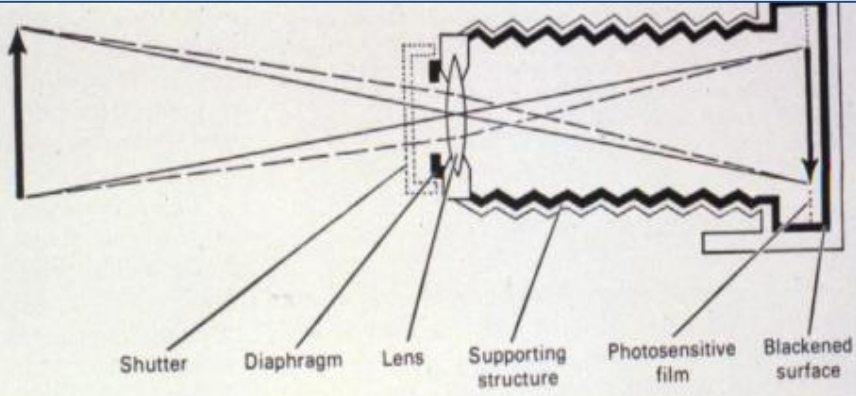
Another alternative eye monkey



DEMO SLIDE BOX 23 Commercial slide. Eye, monkey

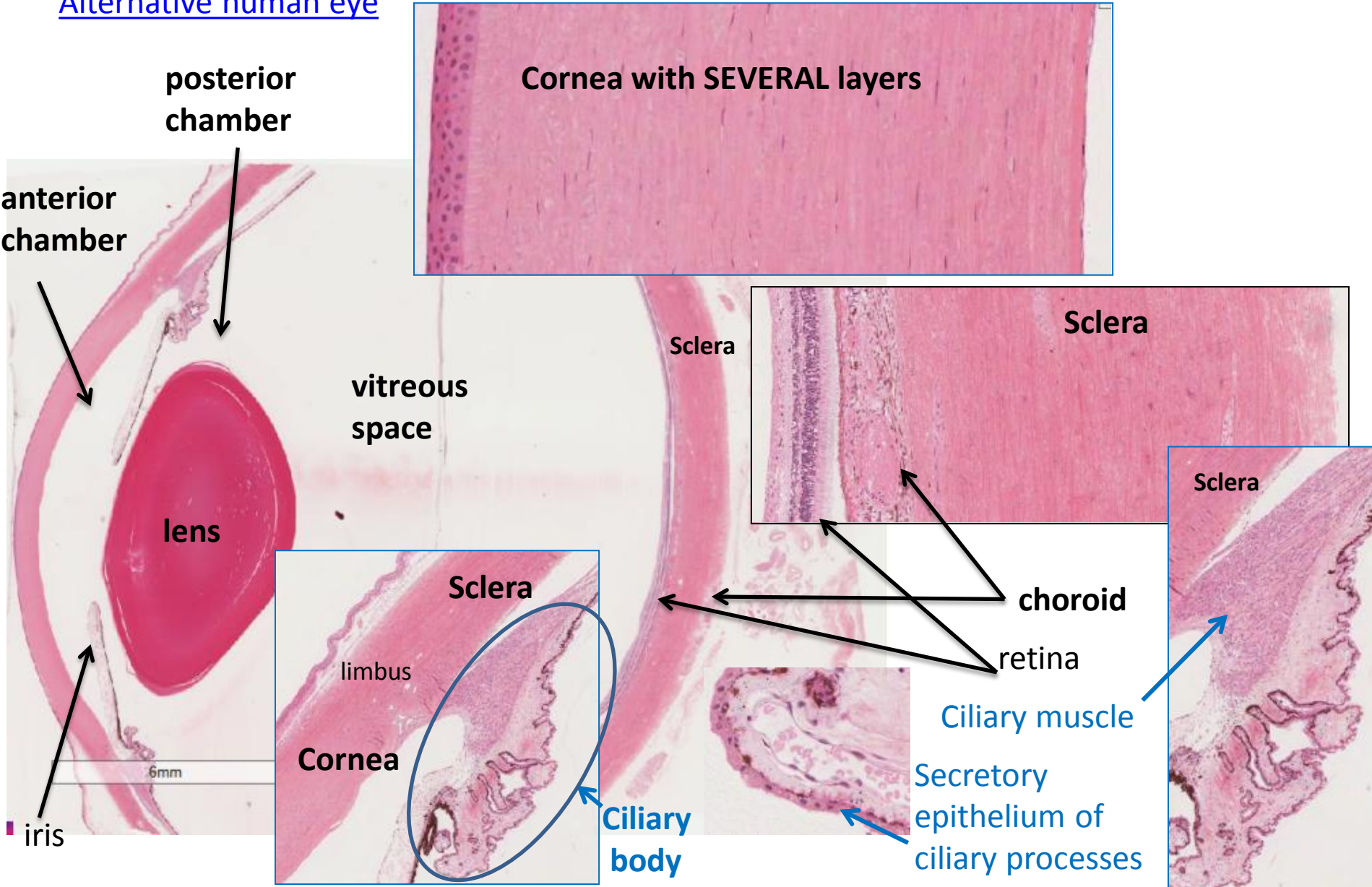
Another alternative eye monkey

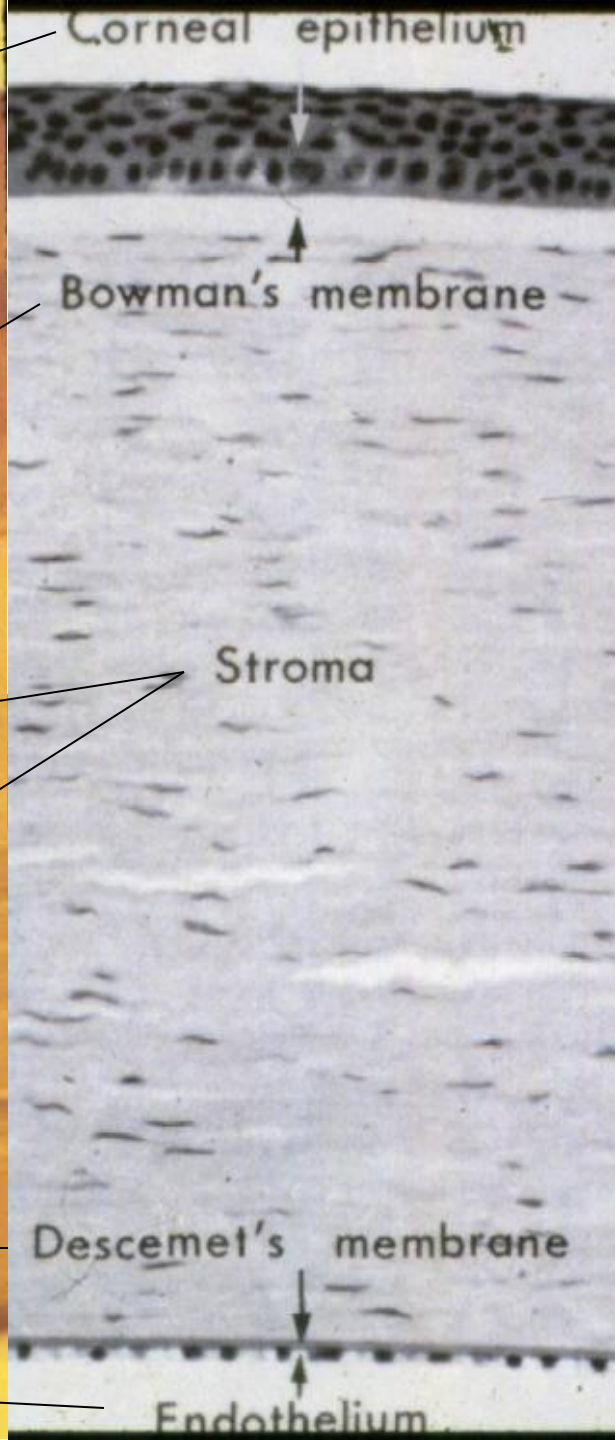
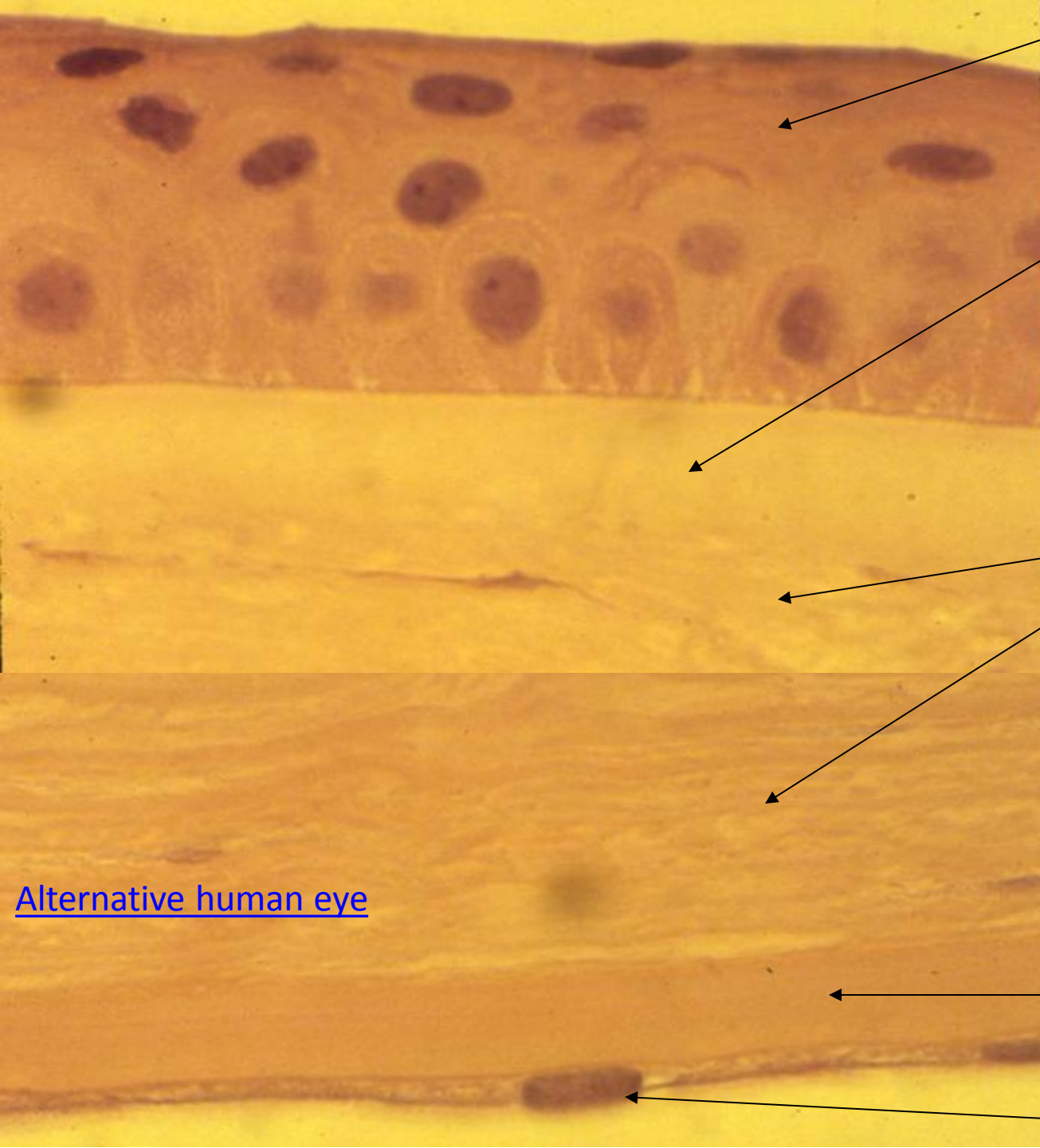




DEMO SLIDE BOX 23 Commercial slide. Eye, monkey

Alternative human eye

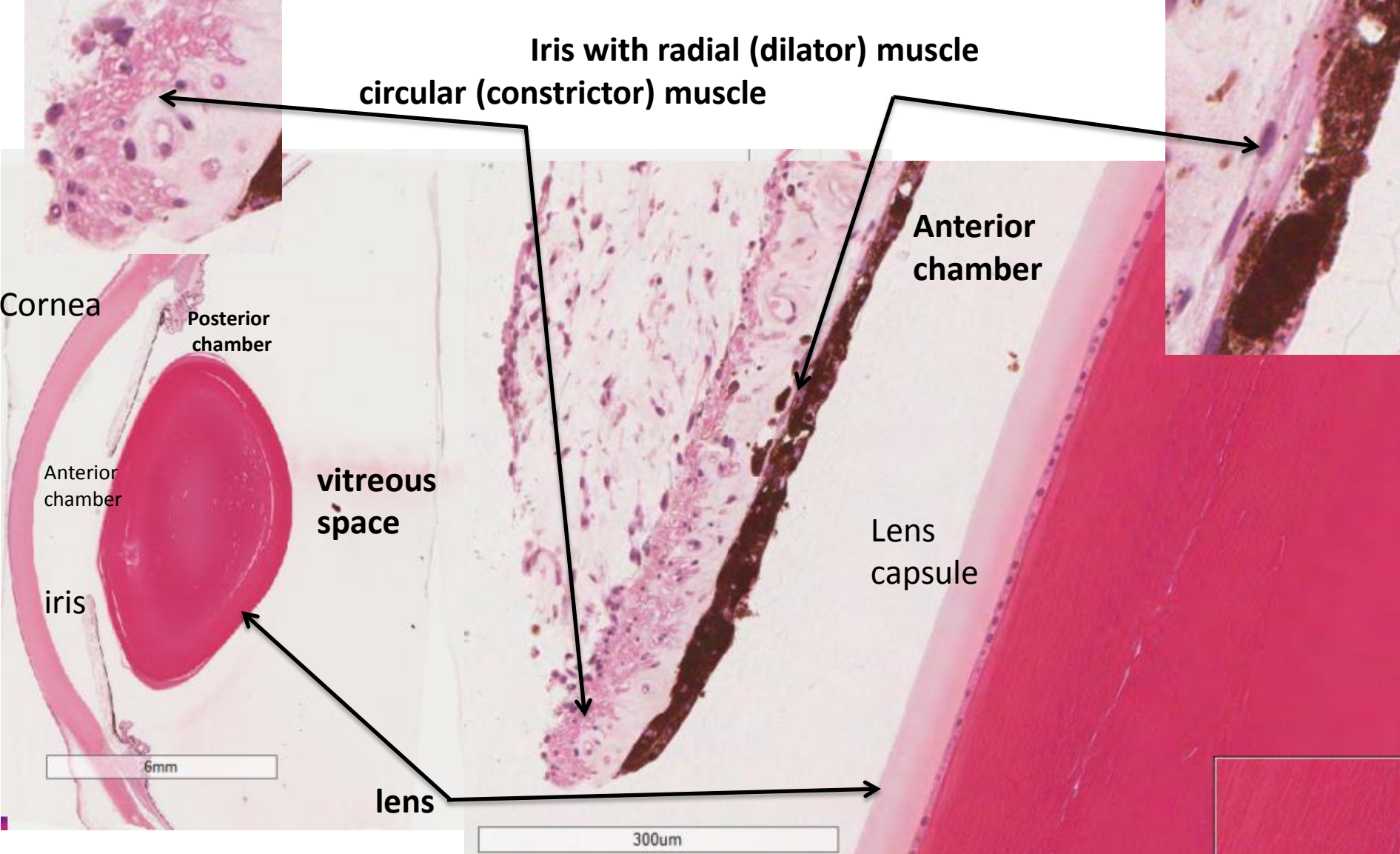




[Alternative human eye](#)

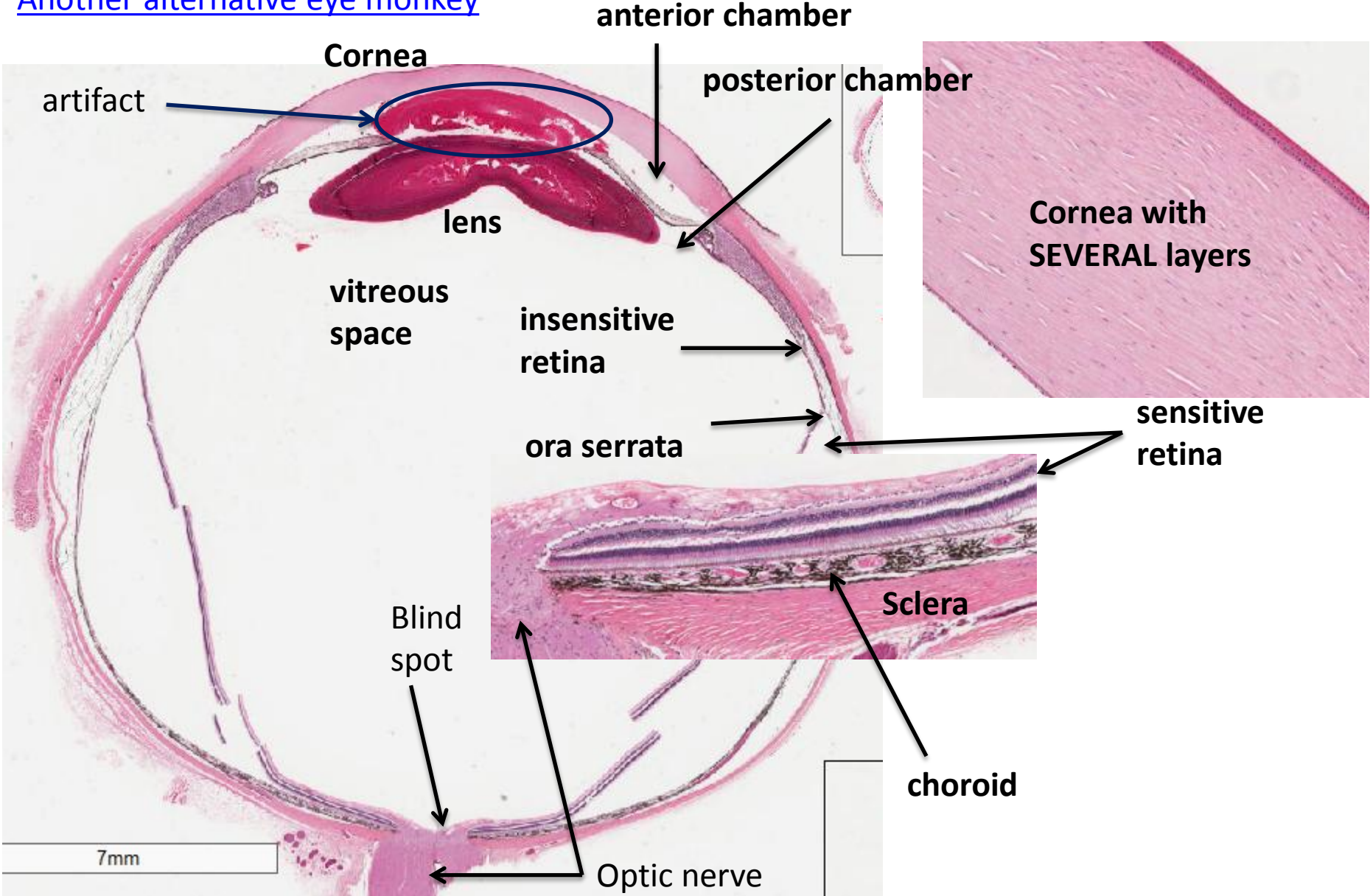
DEMO SLIDE BOX 23 Commercial slide. Eye, monkey

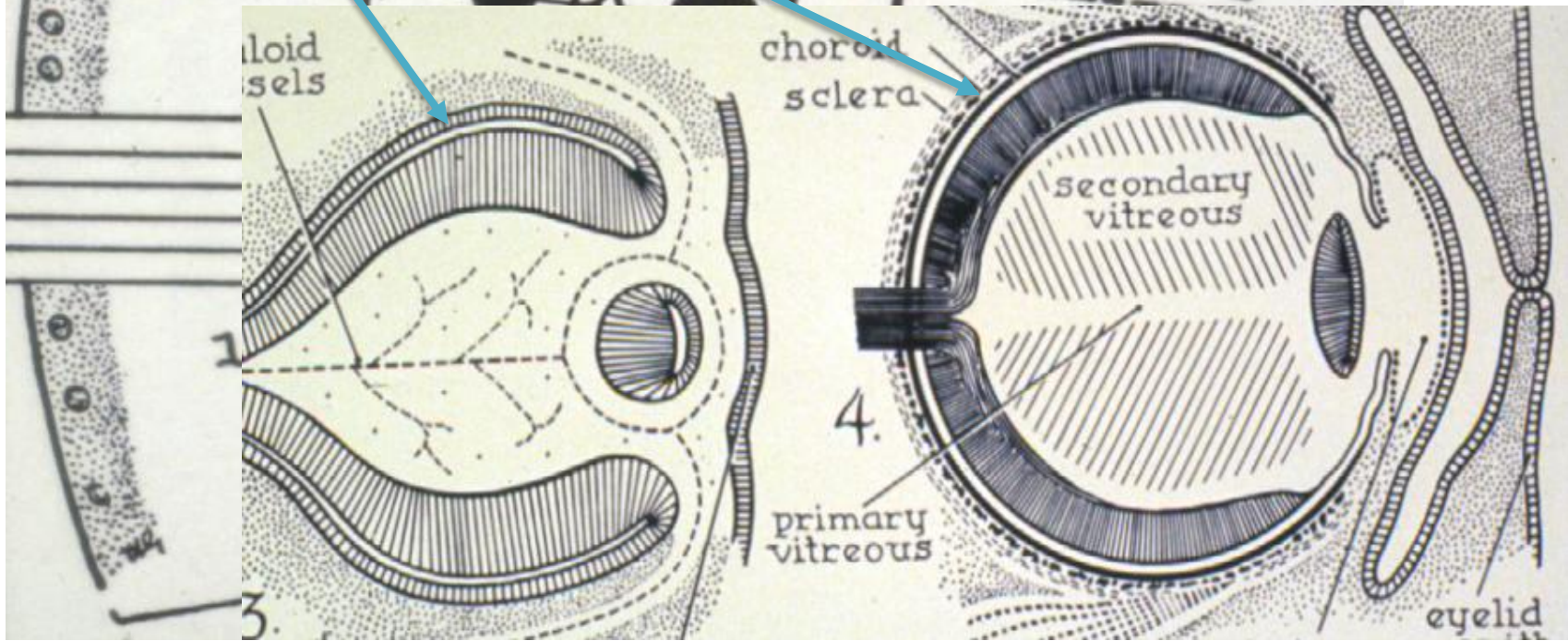
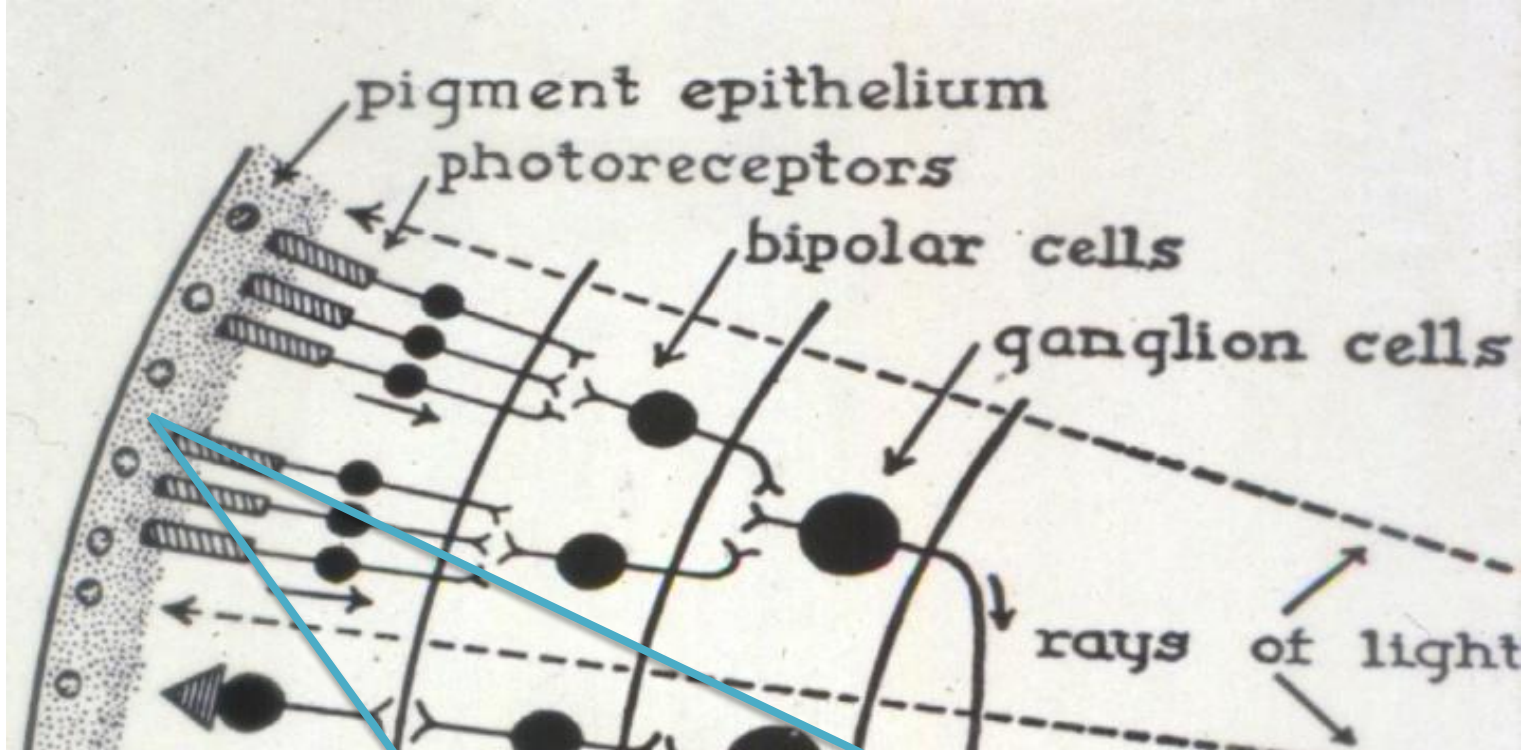
[Alternative human eye](#)

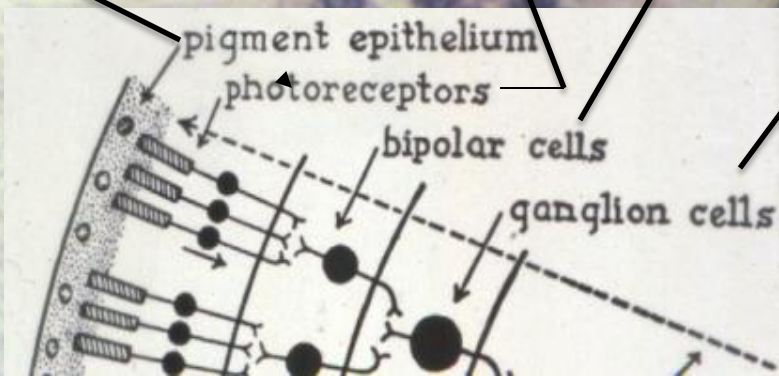
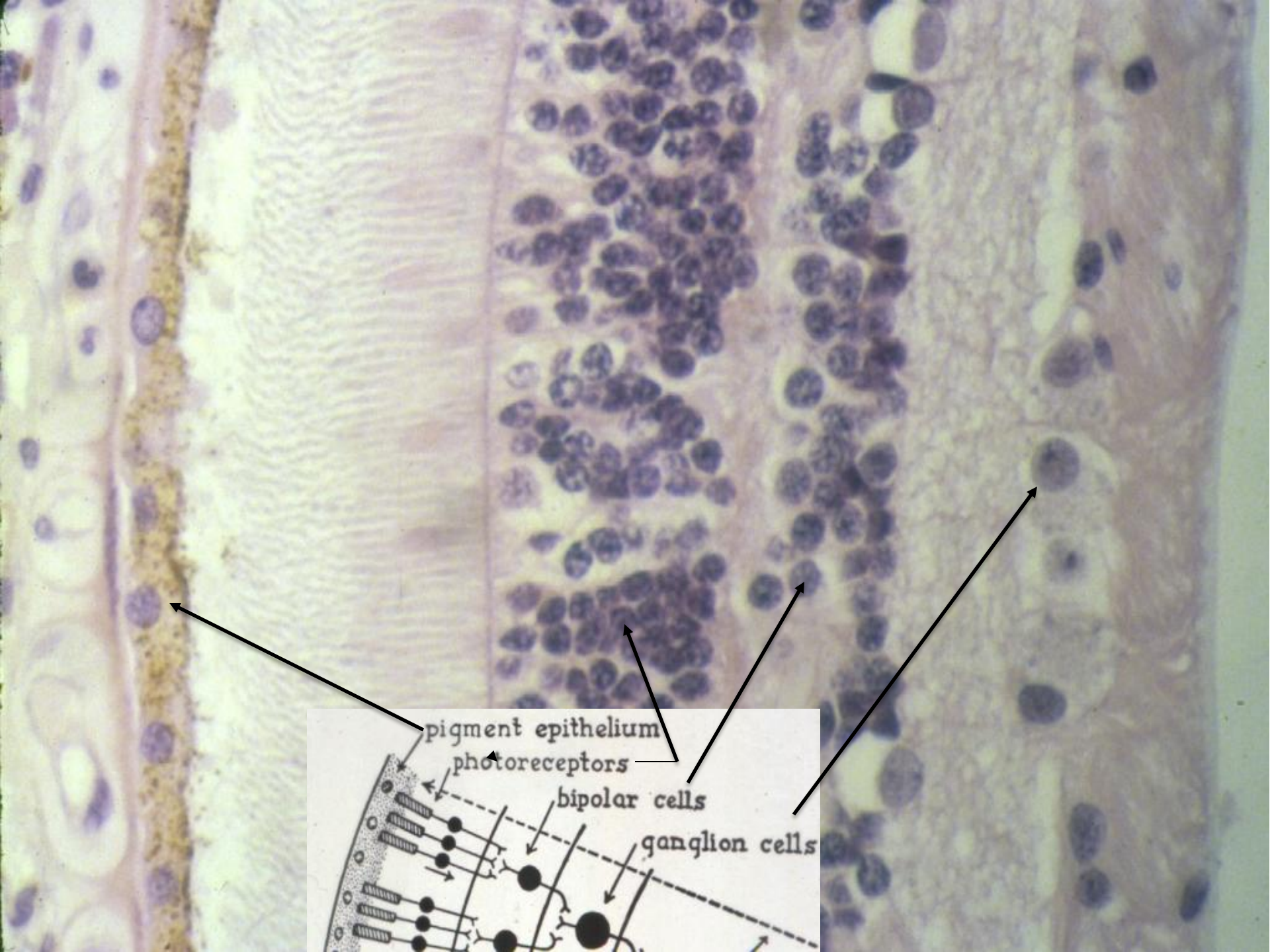


DEMO SLIDE BOX 23 Commercial slide. Eye, monkey

[Another alternative eye monkey](#)





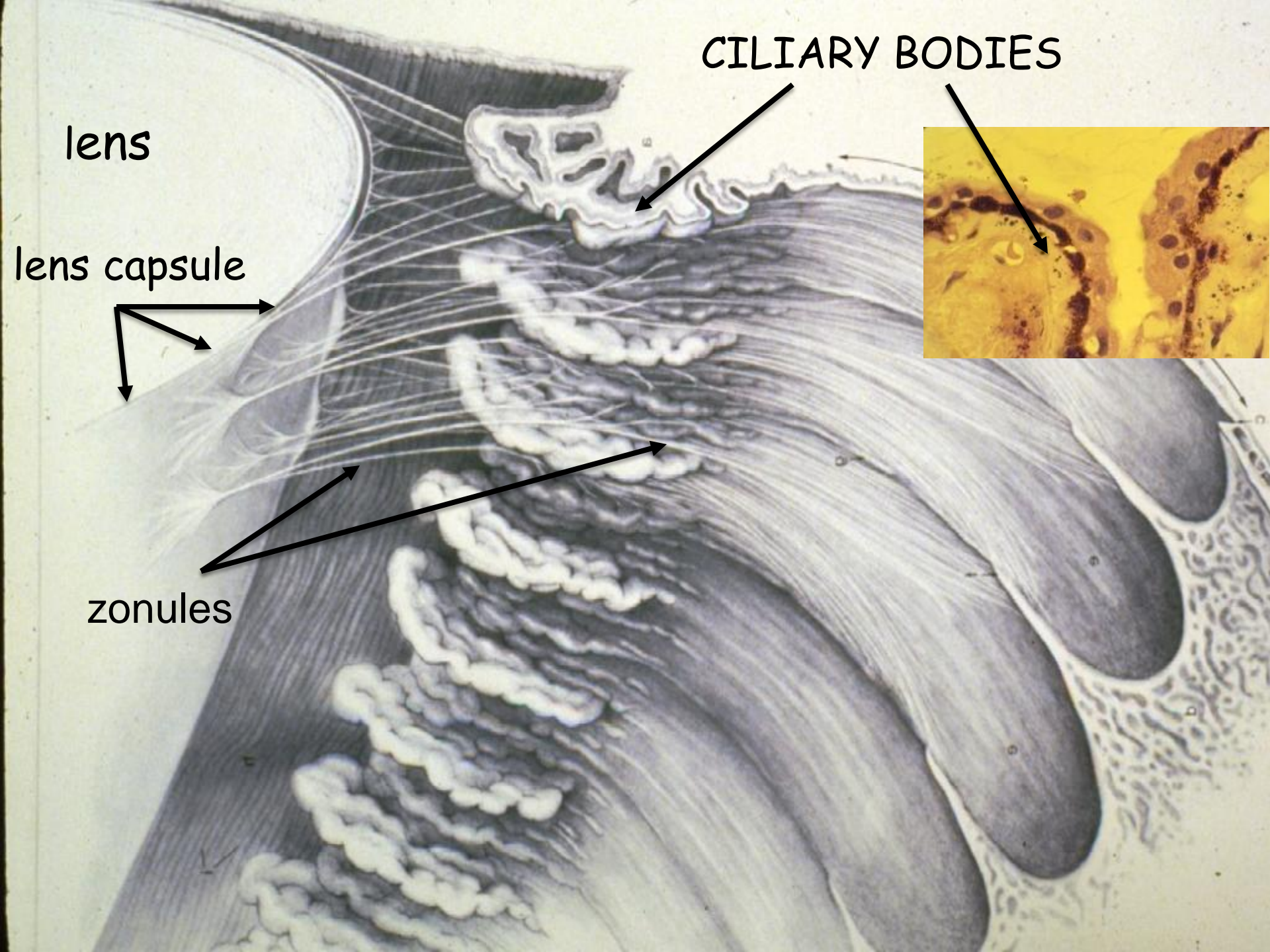
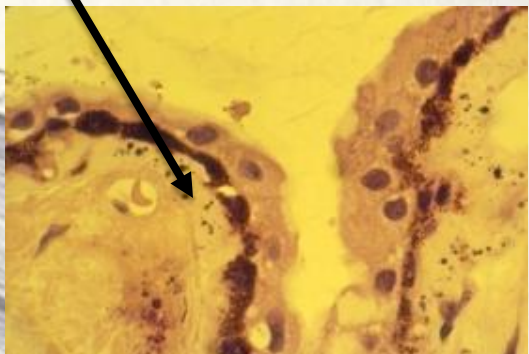


CILIARY BODIES

lens

lens capsule

zonules



DEMO SLIDE BOX 23 Commercial slide. Eye, monkey

[Another alternative eye monkey](#)

trabecular meshwork
outlet of aqueous humor

Lymphatic
cannel

lens

anterior chamber

zonules

lens

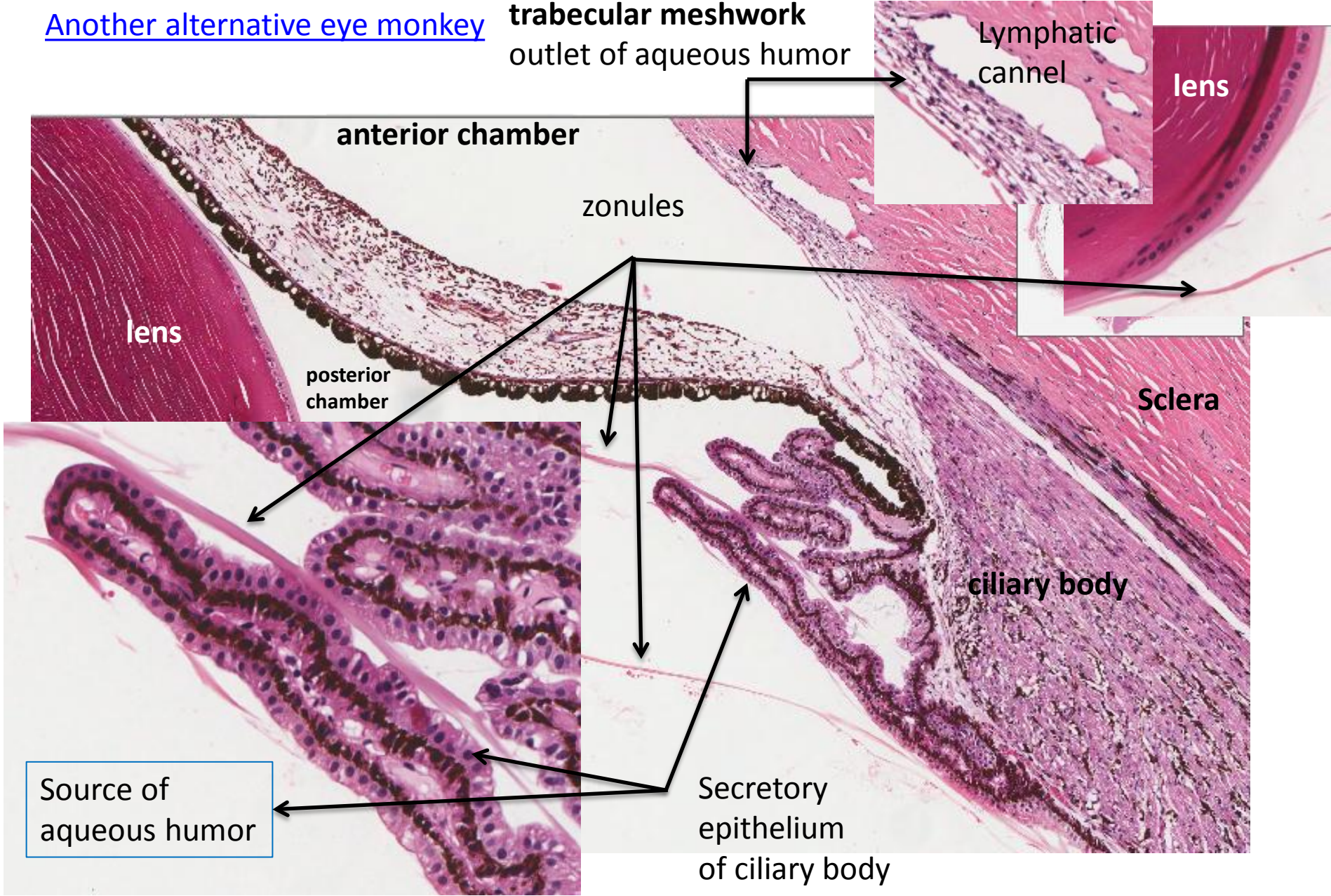
posterior chamber

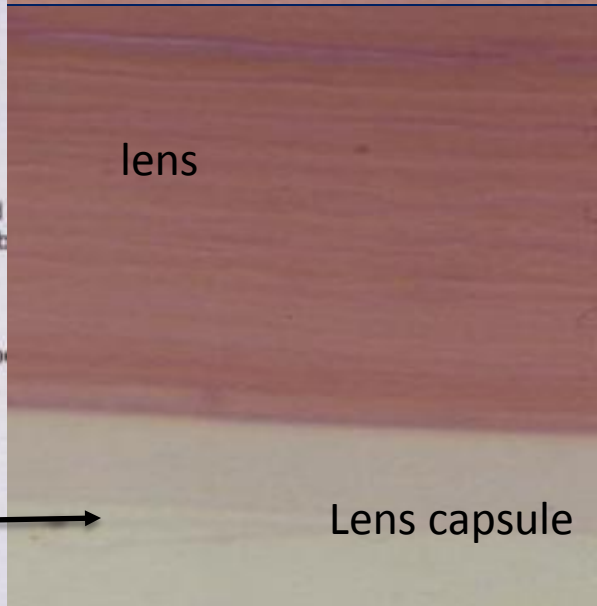
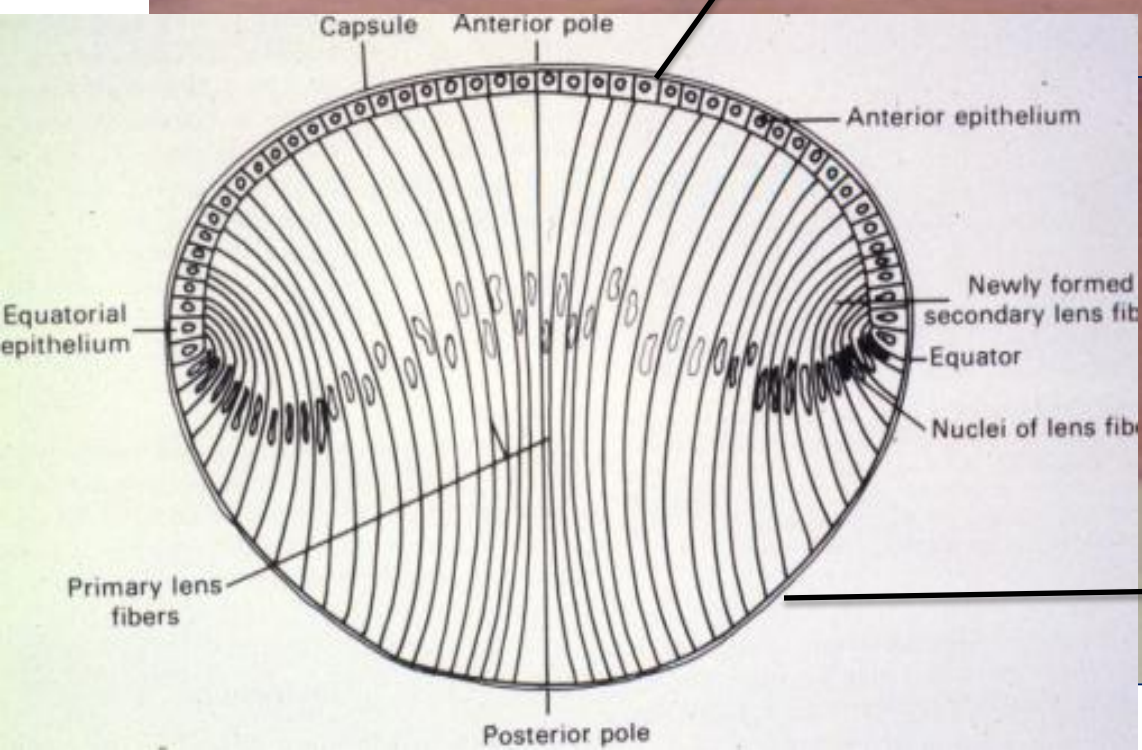
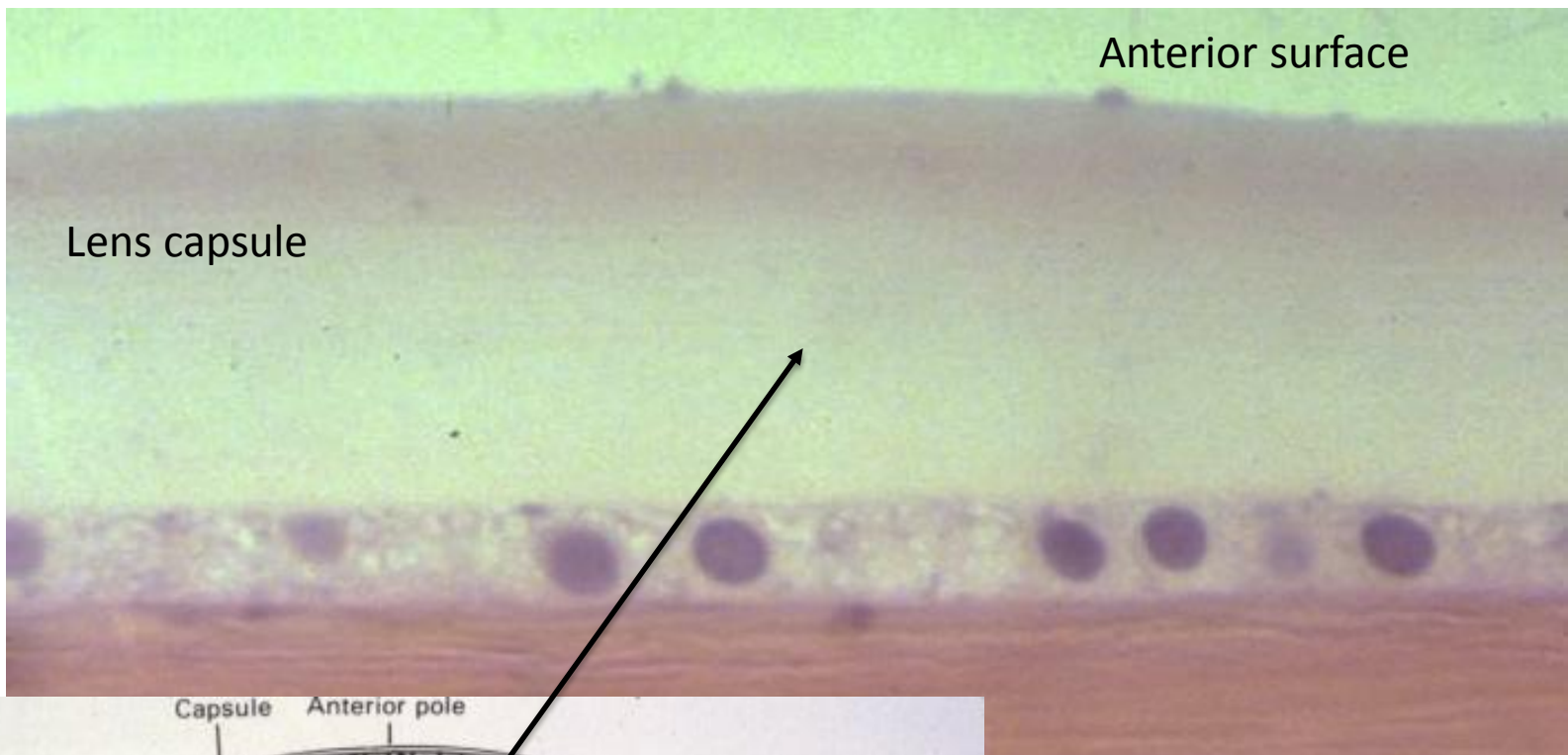
Sclera

ciliary body

Source of
aqueous humor

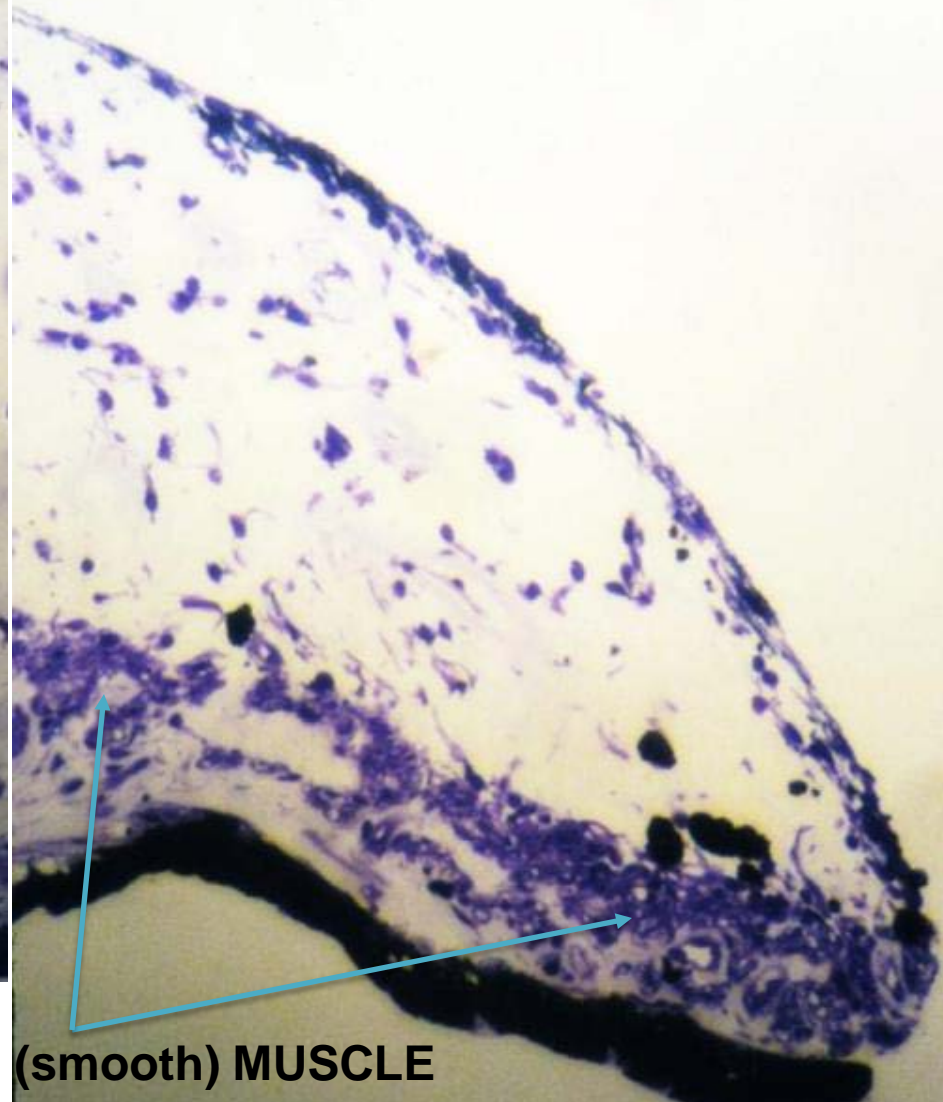
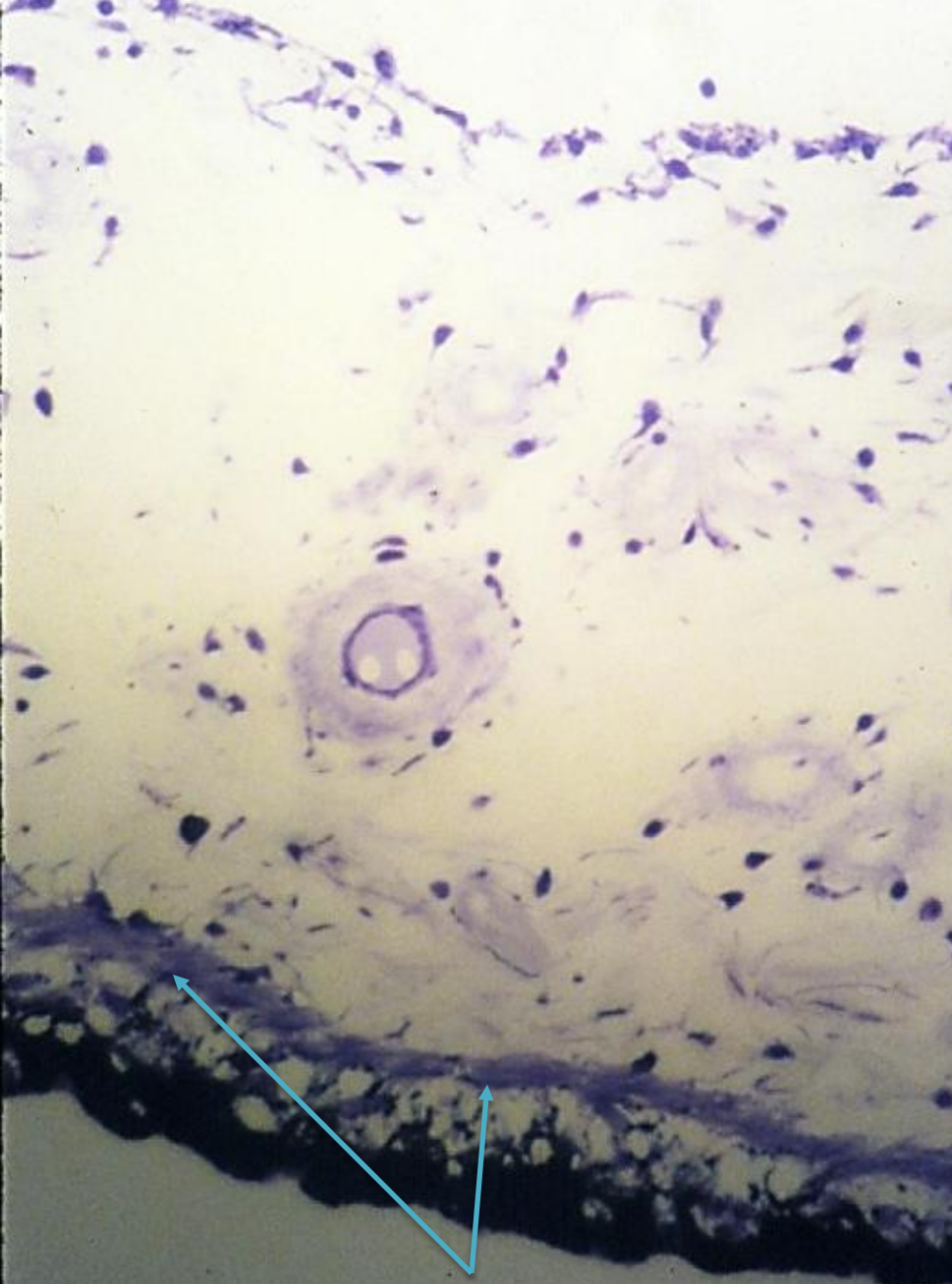
Secretory
epithelium
of ciliary body





Posterior surface

IRIS

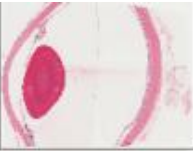
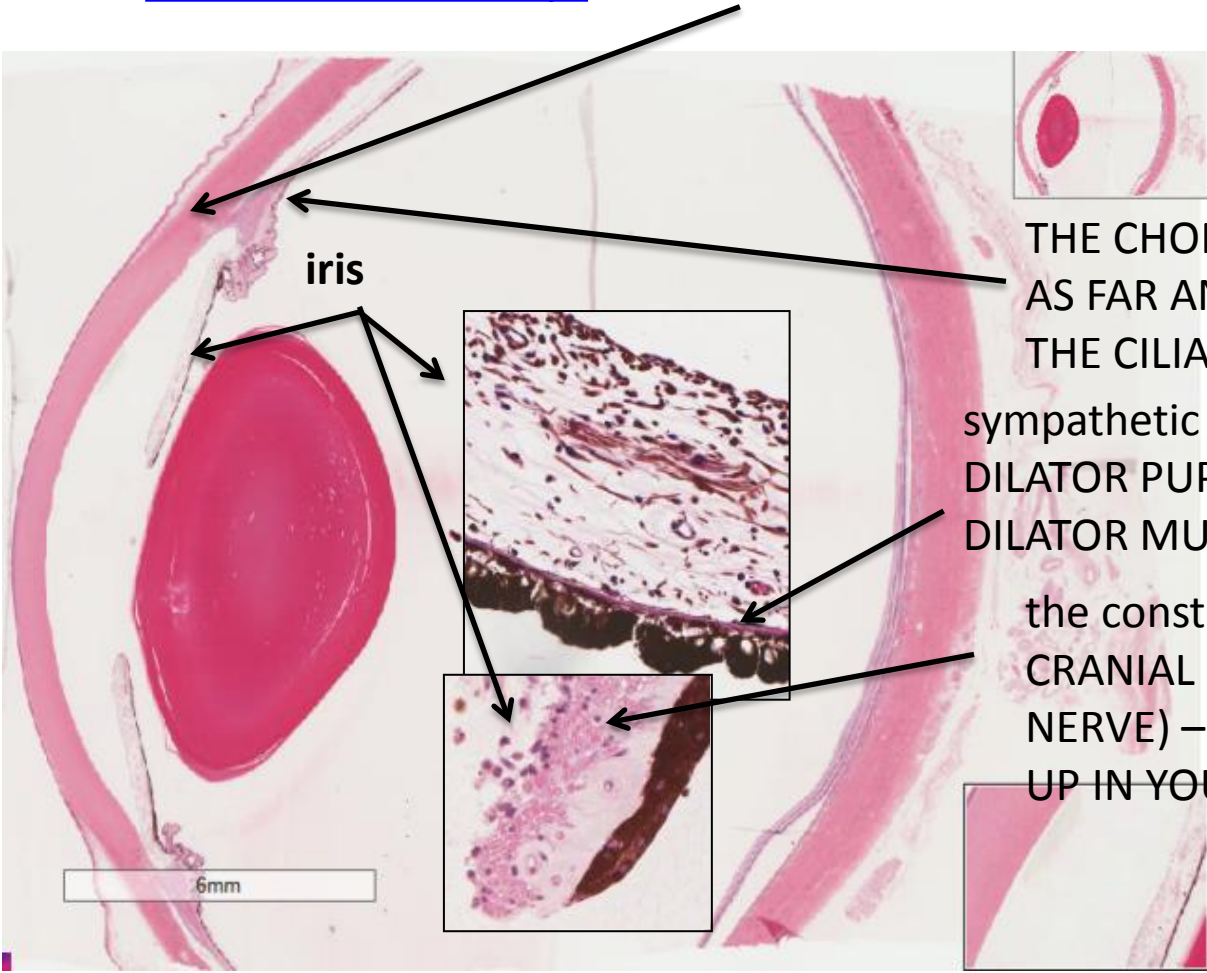


**DILATOR (MYOEPIHELIAL)
AND CONSTRICTOR (smooth) MUSCLE**

DEMO SLIDE BOX 23 Commercial slide. Eye, monkey

Alternative human eye

Limbus is the **JUNCTION OF CORNEA AND SCLERA**

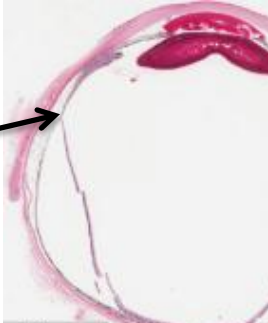
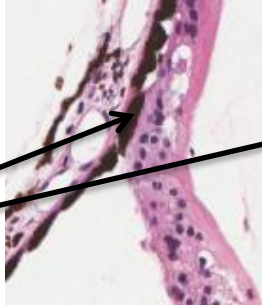


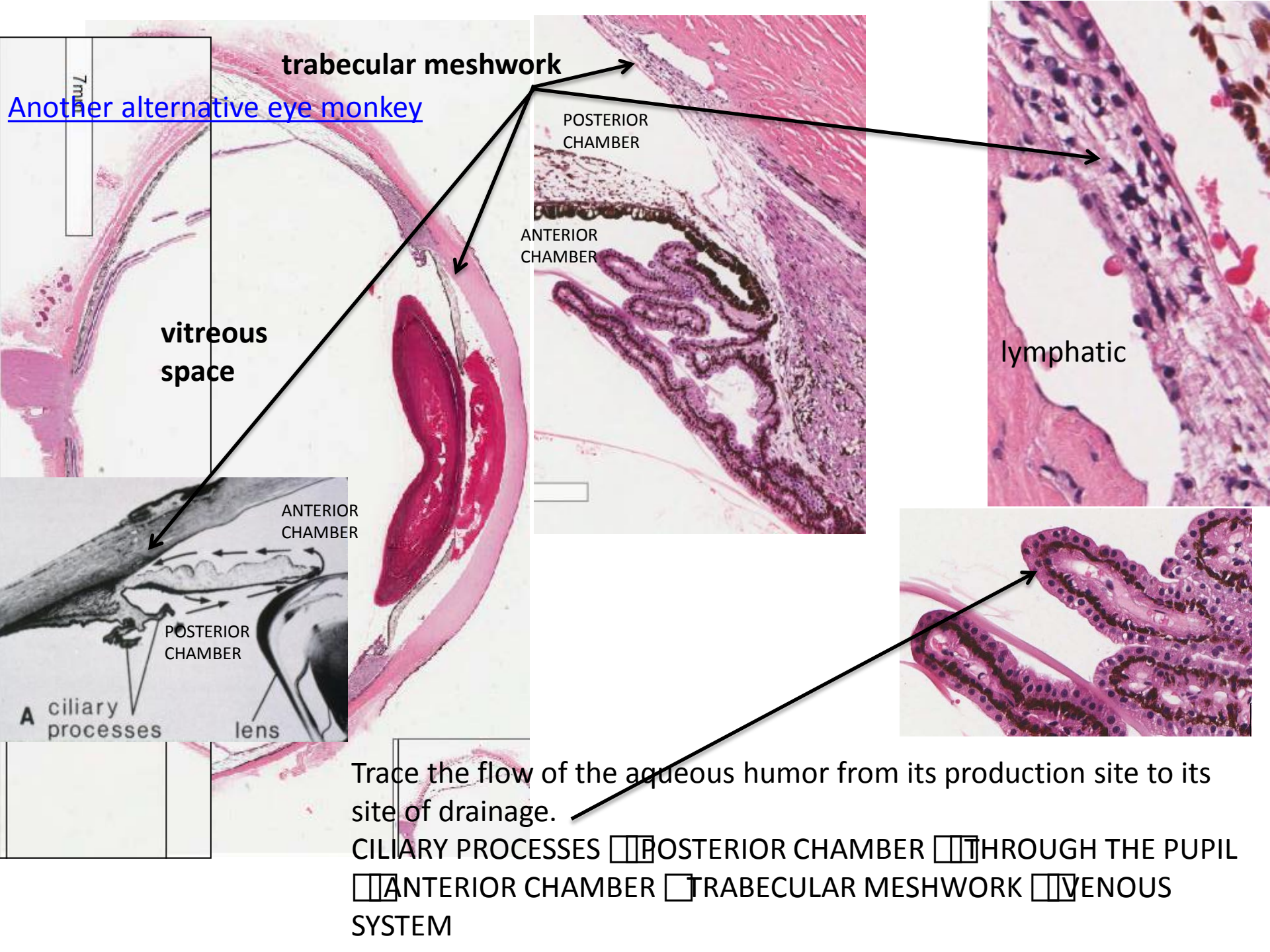
THE CHOROID EXTENDS AS FAR ANTERIORLY AS THE CILIARY BODY

sympathetic innervation regulates the DILATOR PUPILI MUSCLE (RADIAL MUSCLE OR DILATOR MUSCLE)

the constrictor muscles of the iris? CRANIAL NERVE 3 (III) (OR OCULOMOTOR NERVE) – YOU CAN LOOK THIS INFORMATION UP IN YOUR GROSS ANATOMY TEXT

ora serrata = JUNCTION BETWEEN THE SENSITIVE AND INSENSITIVE RETINAS





Another alternative eye monkey

trabecular meshwork

vitreous space

POSTERIOR CHAMBER

ANTERIOR CHAMBER

lymphatic

ANTERIOR CHAMBER

POSTERIOR CHAMBER

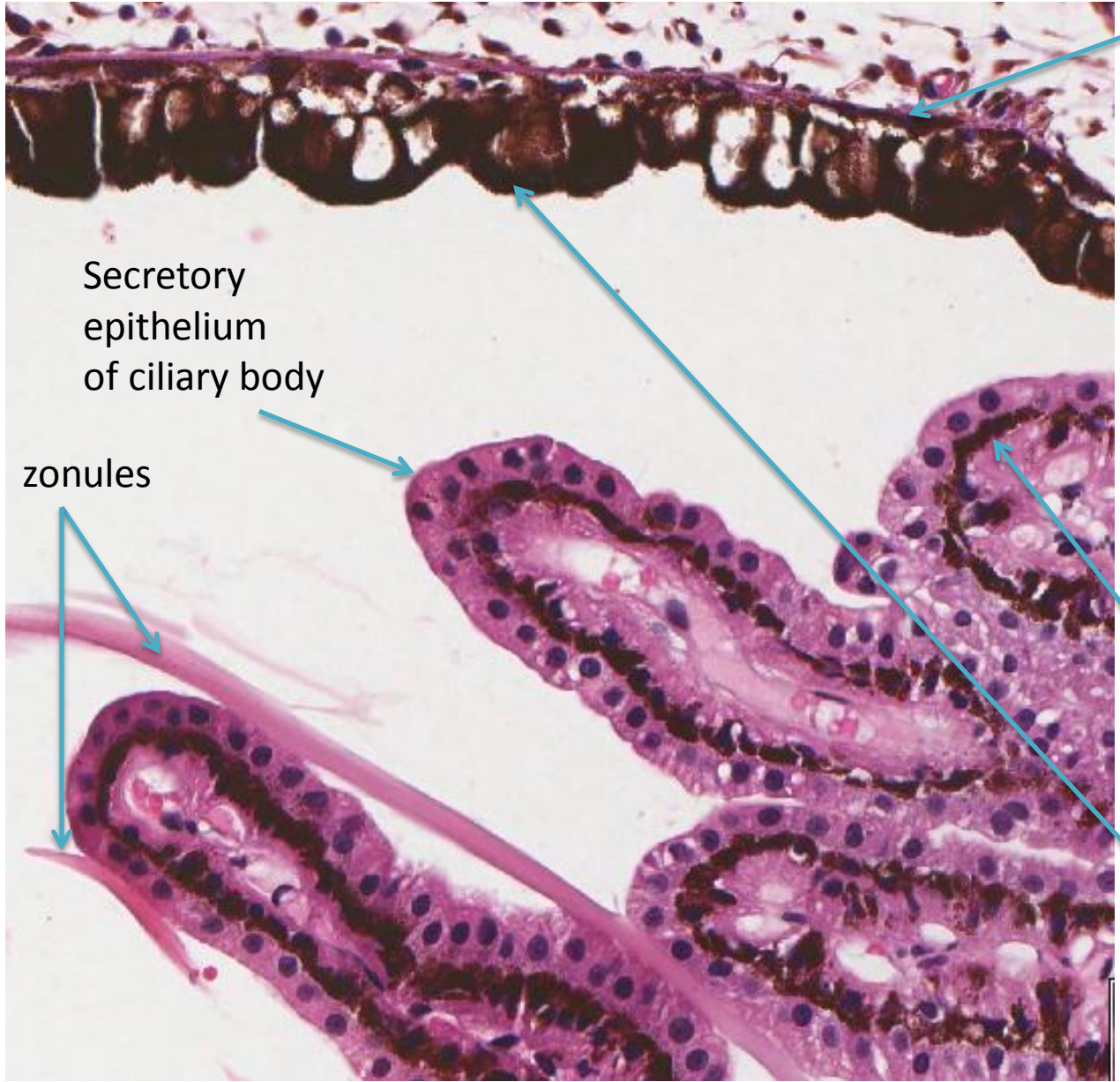
A ciliary processes

lens

Trace the flow of the aqueous humor from its production site to its site of drainage.

CILIARY PROCESSES → POSTERIOR CHAMBER → THROUGH THE PUPIL → ANTERIOR CHAMBER → TRABECULAR MESHWORK → VENOUS SYSTEM

iris



Myoepithelium
inner layer of THE IRIDIAL
PART OF THE INSENSITIVE
RETINA.

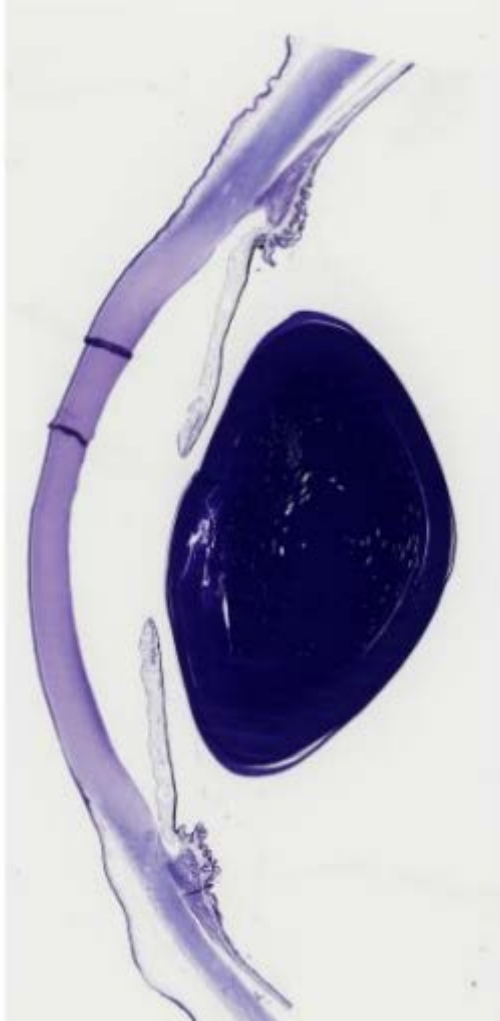
Secretory
epithelium
of ciliary body

zonules

BOTH THE CILIARY
AND IRIDIAL
PORTIONS OF THE
INSENSITIVE RETINA
HAVE TWO LAYERS
OF CELLS. THE
CILIARY PORTION
HAS ONE
PIGMENTED LAYER
(THE outer LAYER)
AND ONE NON
PIGMENTED LAYER
(THE inner LAYER).
The inner LAYER OF
CELLS ARE
PIGMENTED IN THE
IRIDIAL PART OF THE
INSENSITIVE RETINA.

[Another alternative eye monkey](#)

Toluidine blue stained eye



another human eye

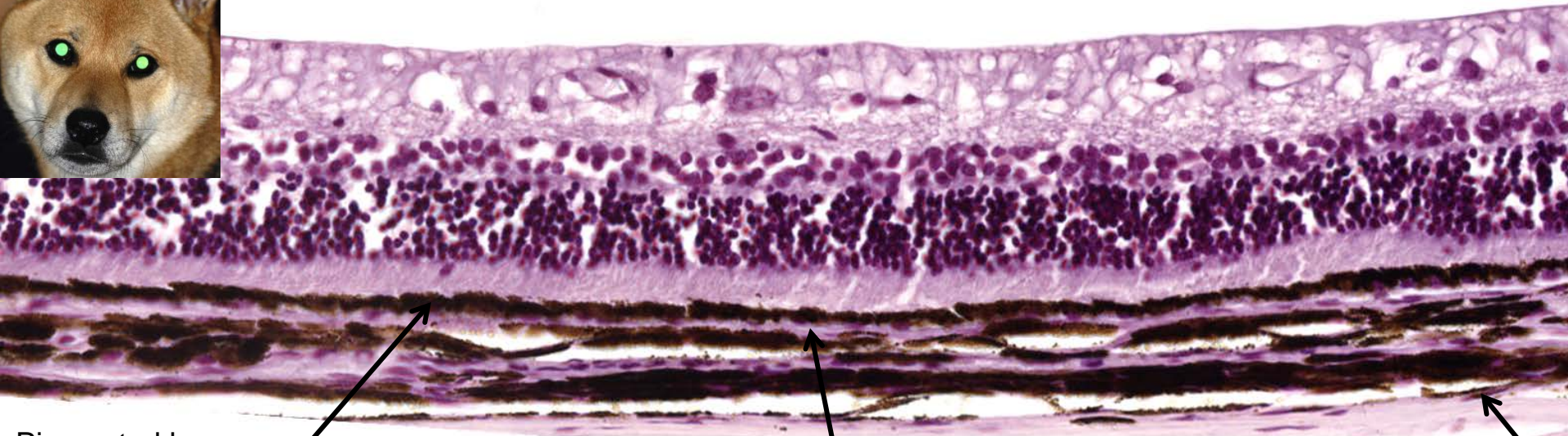


Human eye
Back half



Tapetum lucidum = reflects image from back of the eye
in animals that can see better in the dark than humans

[Dog eye 189](#)

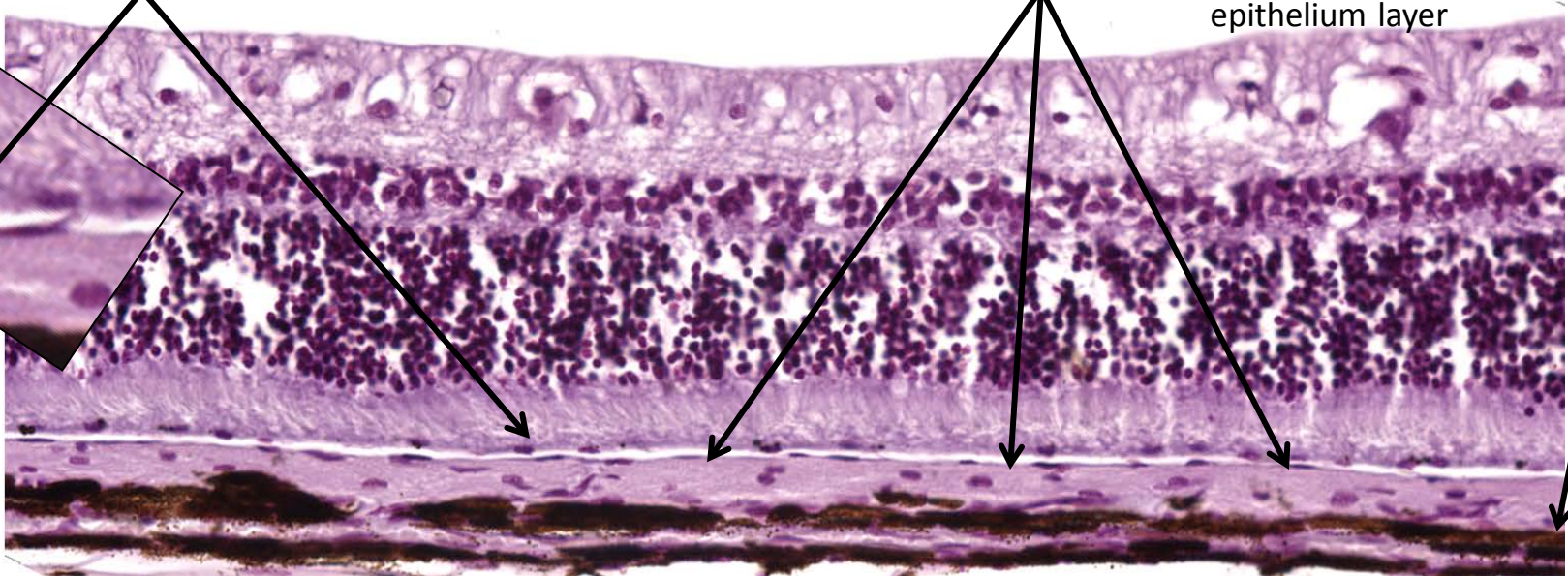
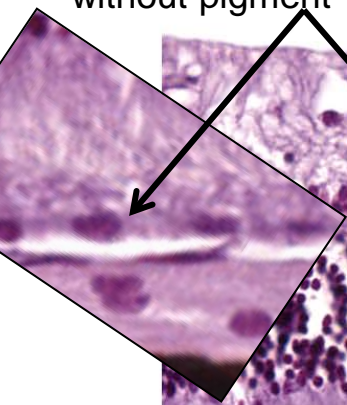


Pigmented layer
of epithelial cells:
with pigment
without pigment

Little to No Tapetum lucidum

Tapetum lucidum = non-pigmented CCT
under pigmented
epithelium layer

Choroid





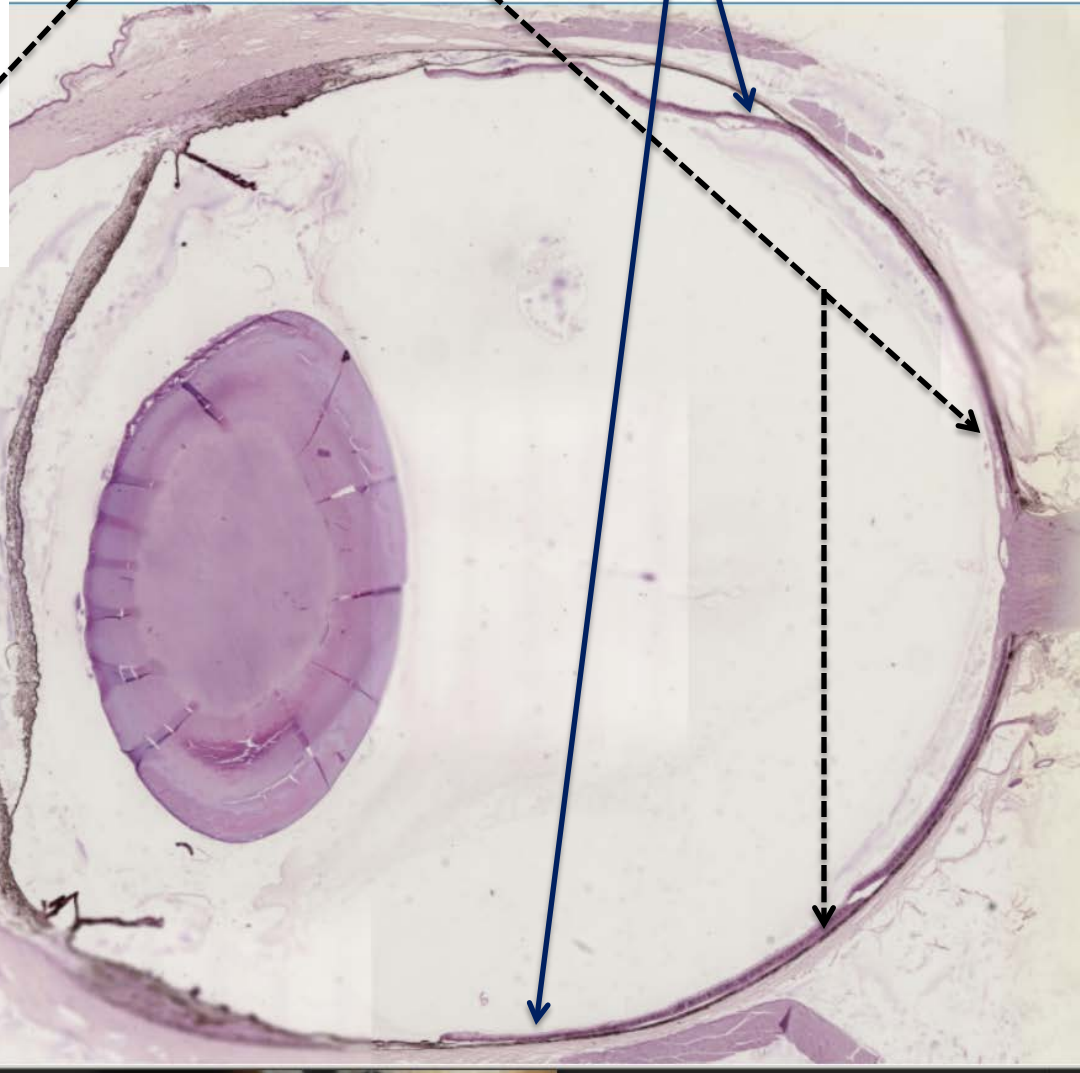
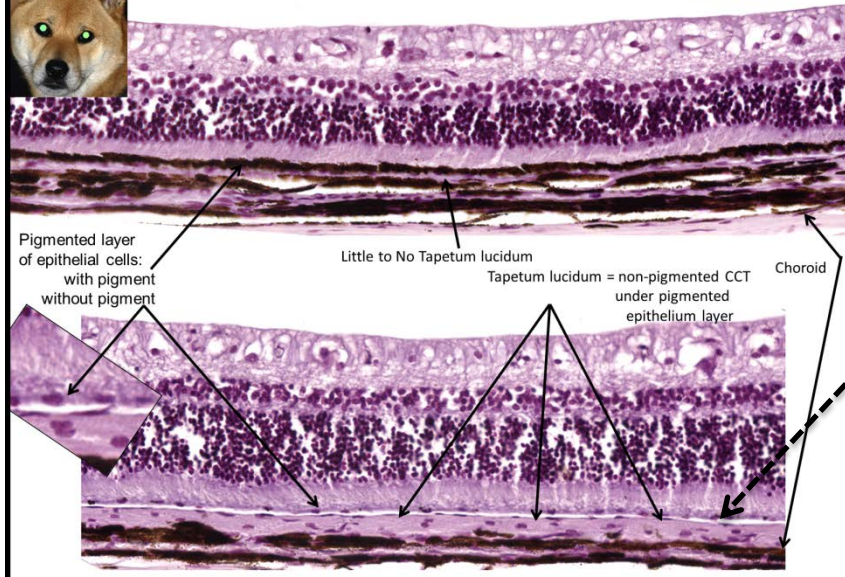
Tapetum lucidum = reflects image from back of the eye in animals that can see better in the dark than humans

[Dog eye 189](#)

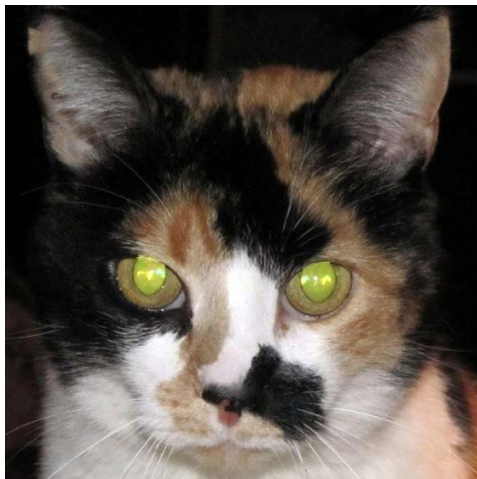
[Dog eye 189](#)

Tapetum lucidum is located at the back of the eye,

but not on the sides



Given the tapetum lucidum is located at the back of the eye, the dog (animal) must be looking directly at you for you to see the reflection.



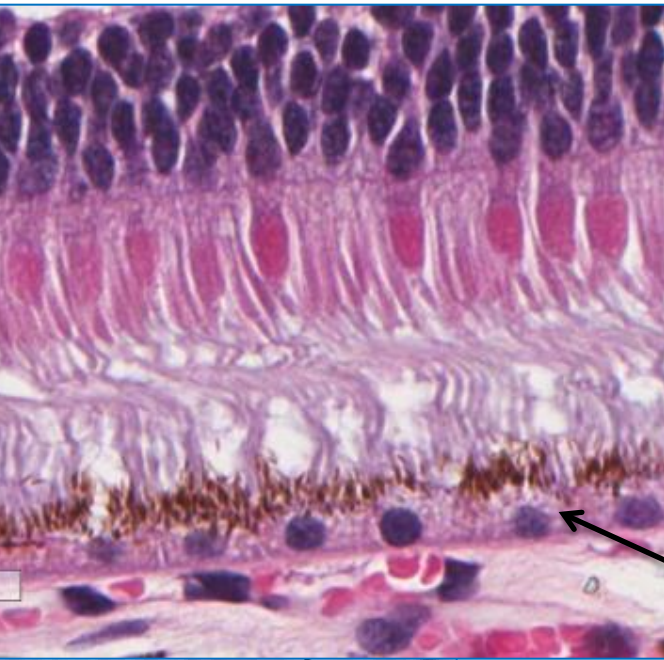
.04.32

Eye monkey

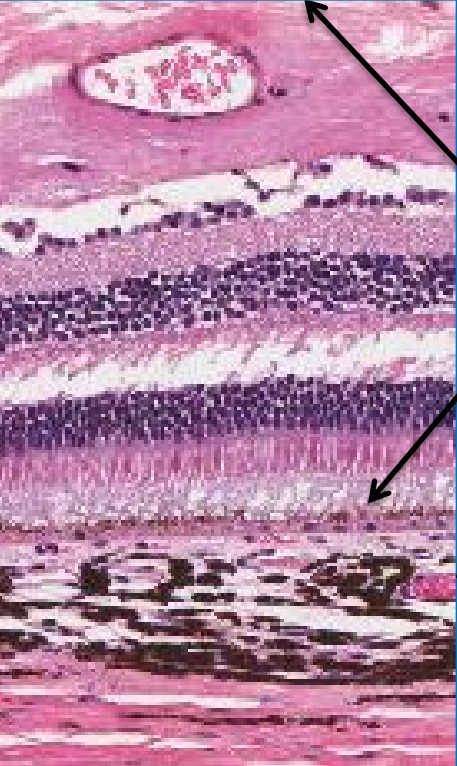


34412

Capillary network
in retina

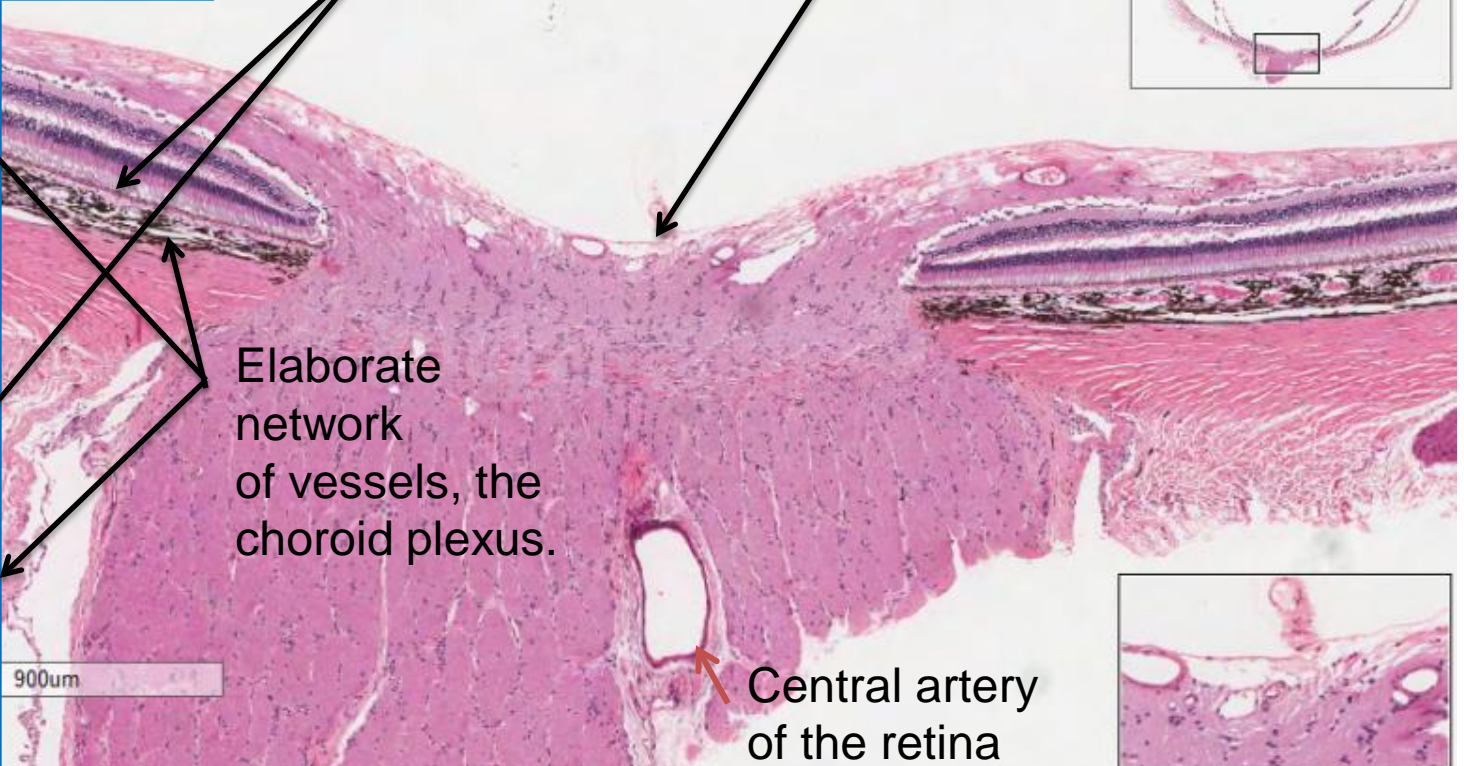


Pigmented layer
of epithelial cells

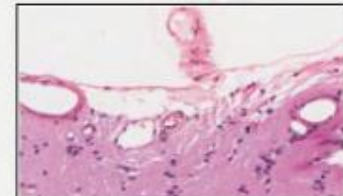


Elaborate
network
of vessels, the
choroid plexus.

900um



Central artery
of the retina

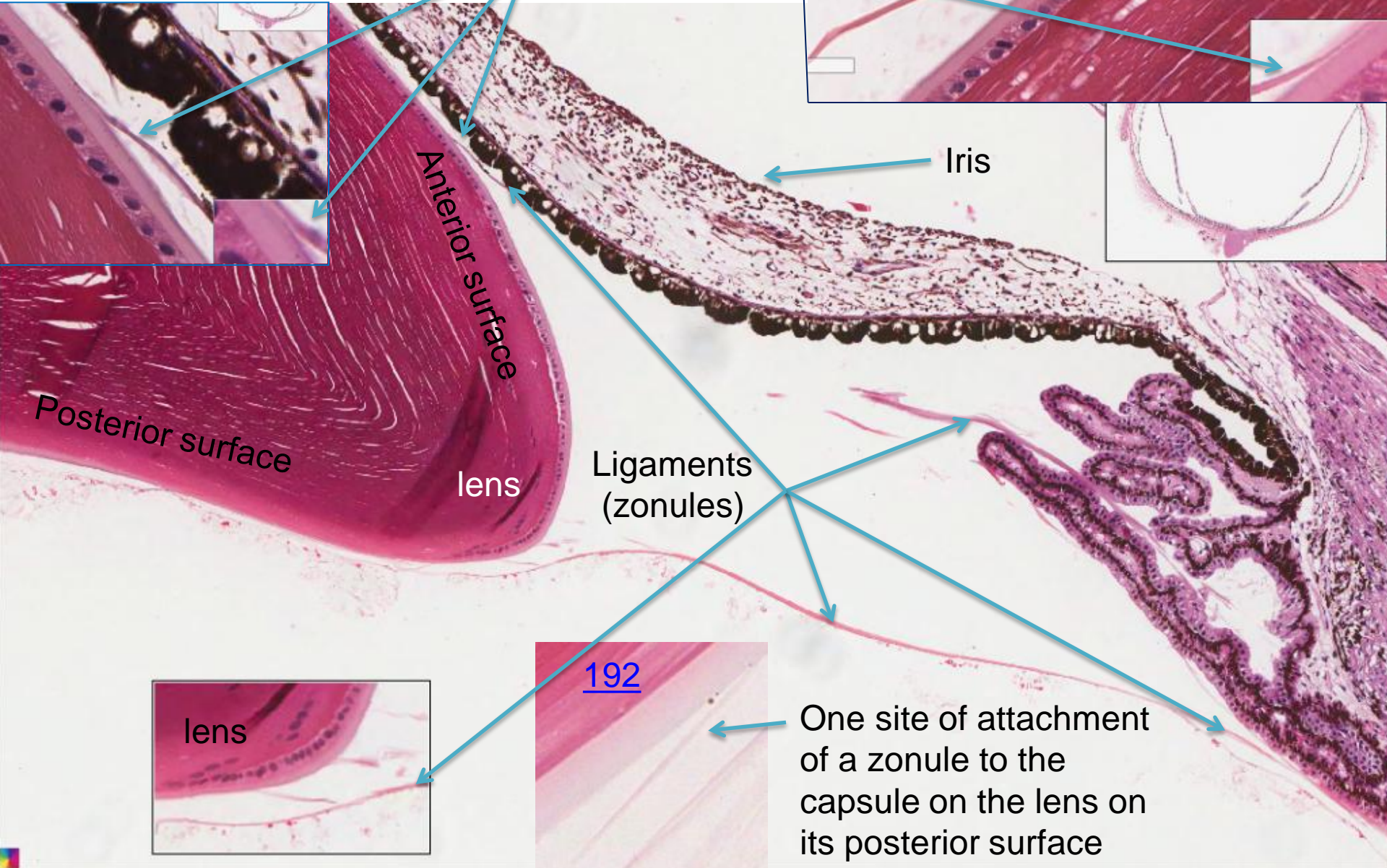


34412

Sites of attachment of
zonules to the lens' capsule

Anterior surface

Eye monkey



Demo Slide 22a-Eye, Cow

choroid

Pigmented epithelium

photoreceptors

Bipolar cells

Cell bodies of
Ganglion cells

Optic nerve fibers

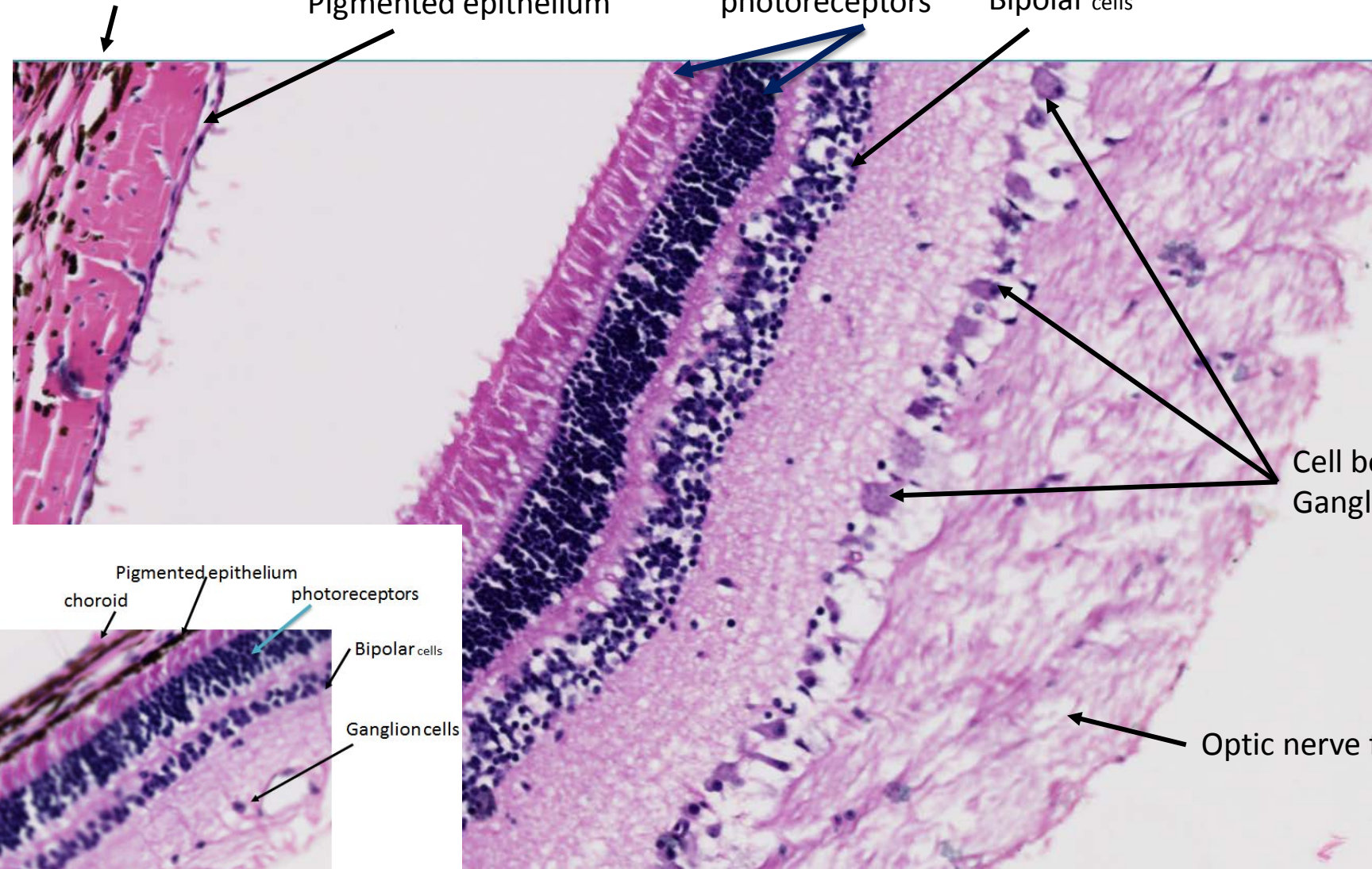
Pigmented epithelium
choroid

photoreceptors

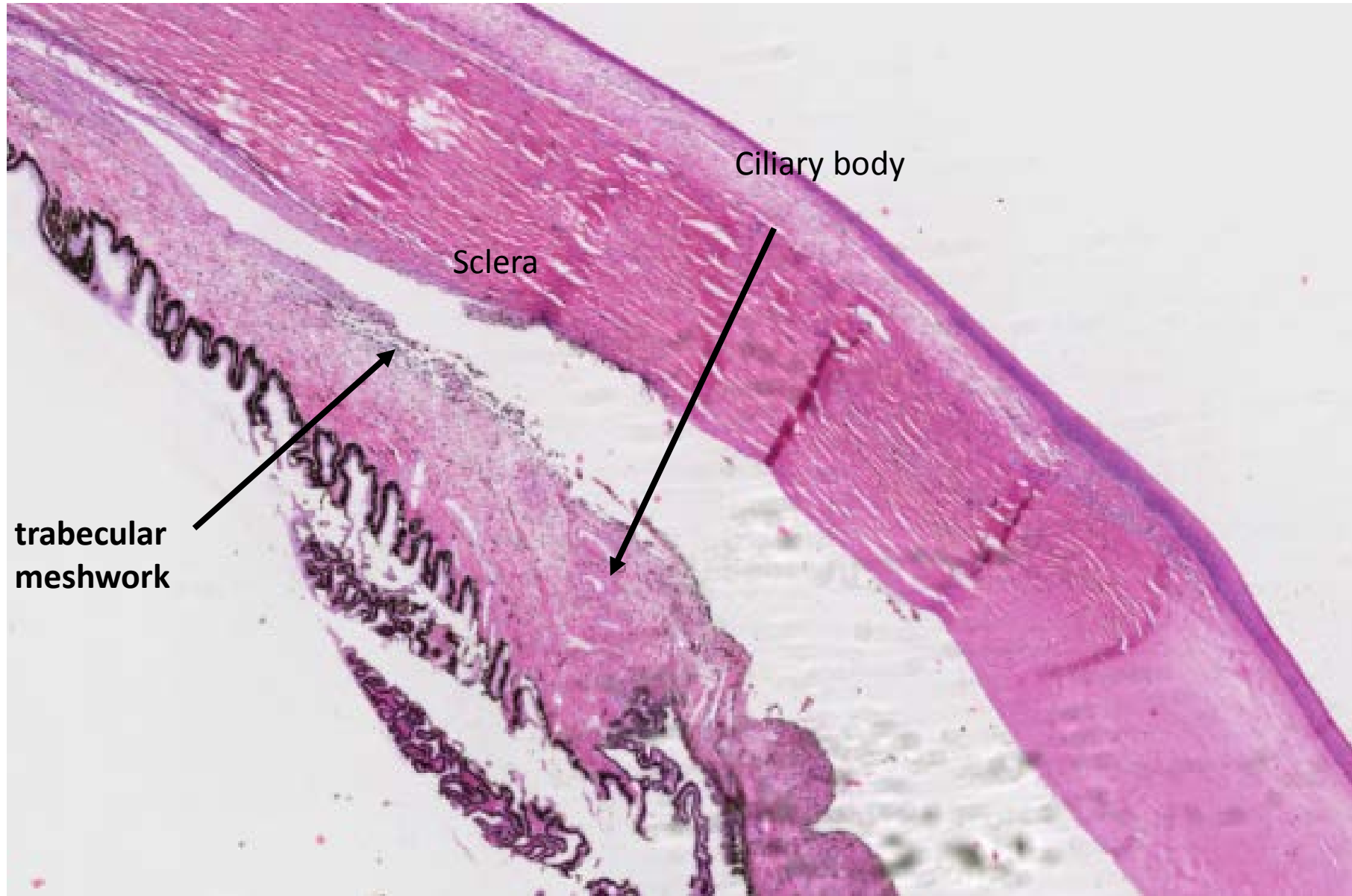
Bipolar cells

Ganglion cells

Optic nerve fibers



Demo Slide 22a-Eye, Cow



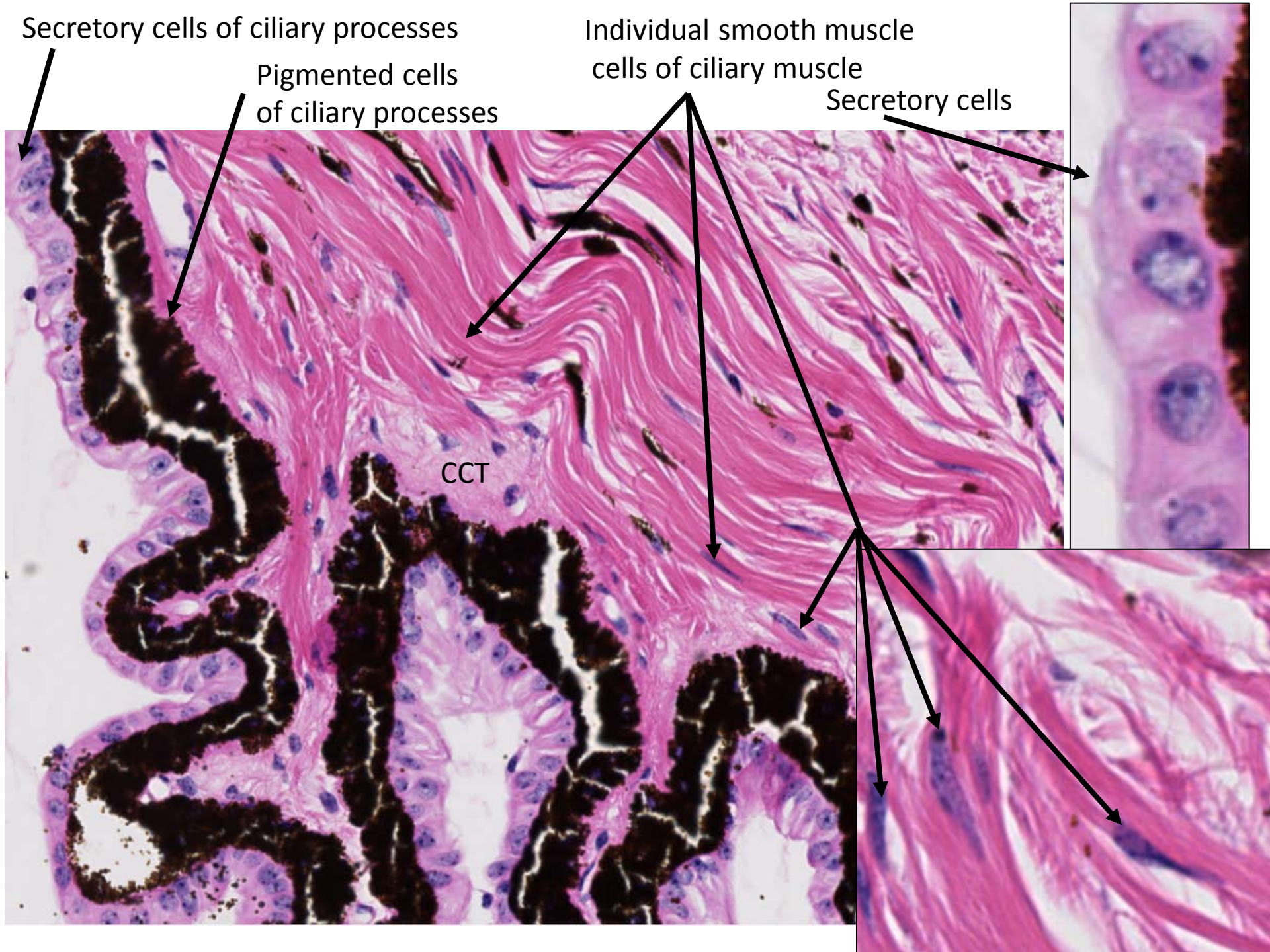
Secretory cells of ciliary processes

Pigmented cells
of ciliary processes

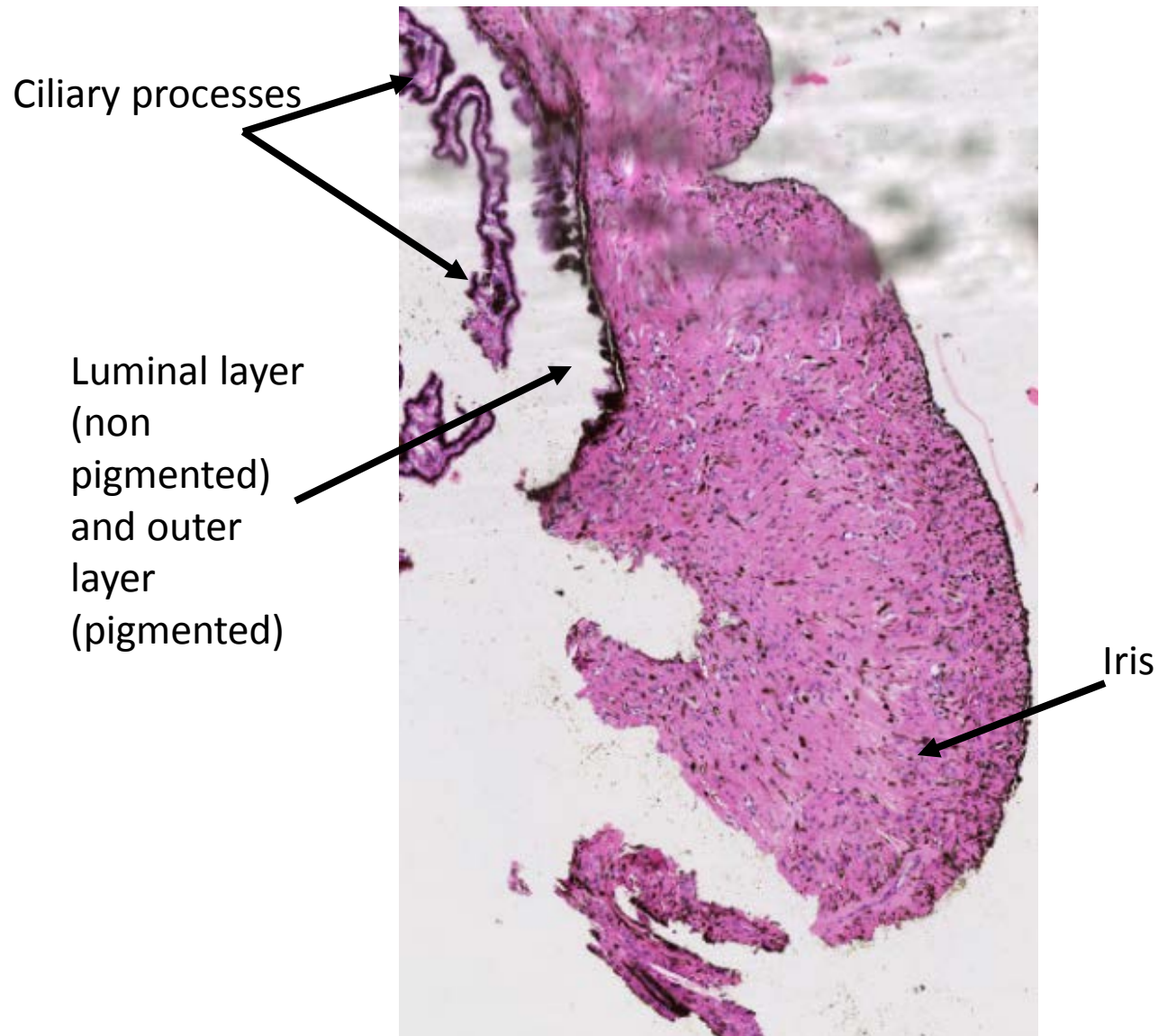
Individual smooth muscle
cells of ciliary muscle

Secretory cells

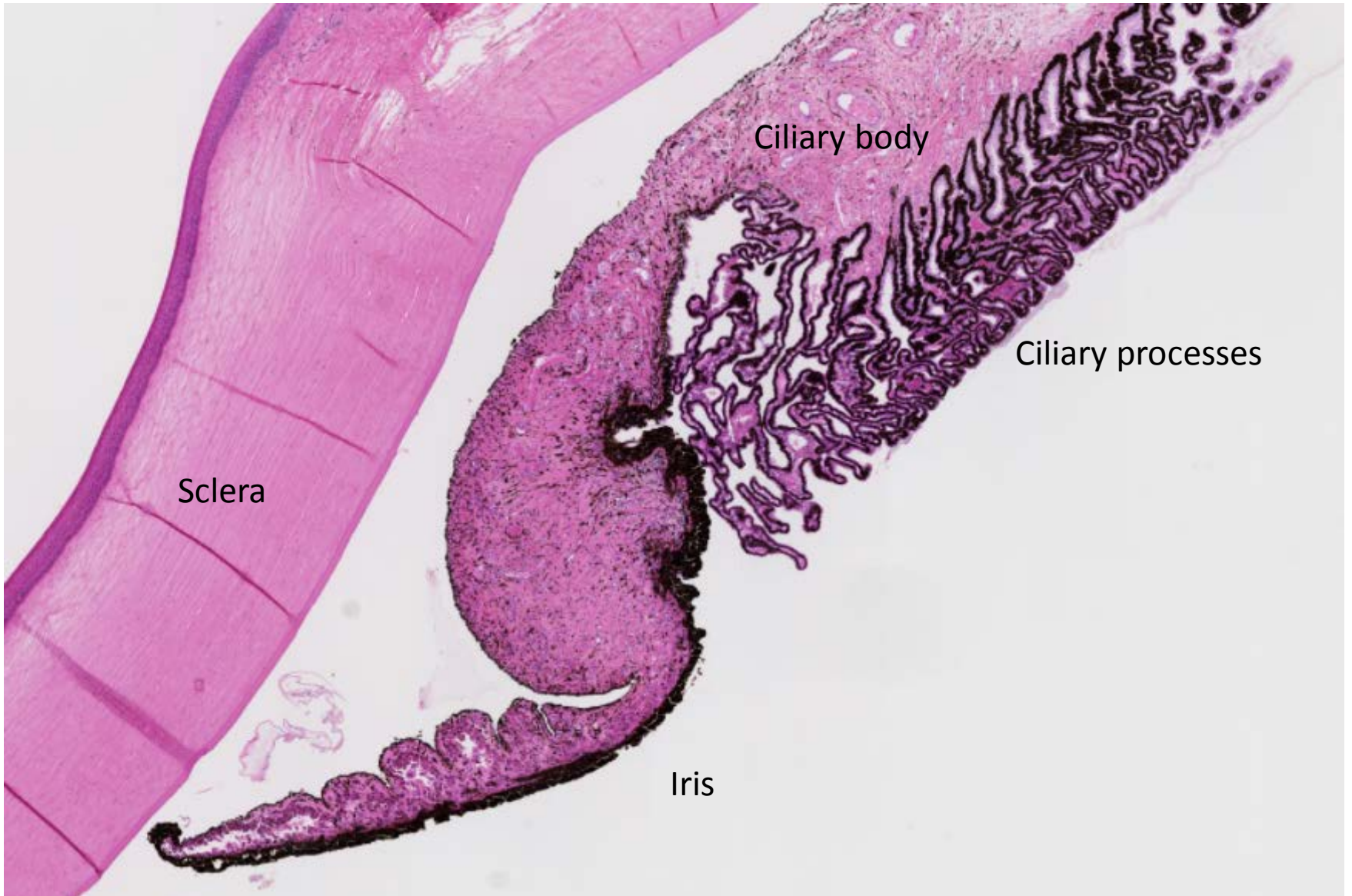
CCT



Demo Slide 22a-Eye, Cow

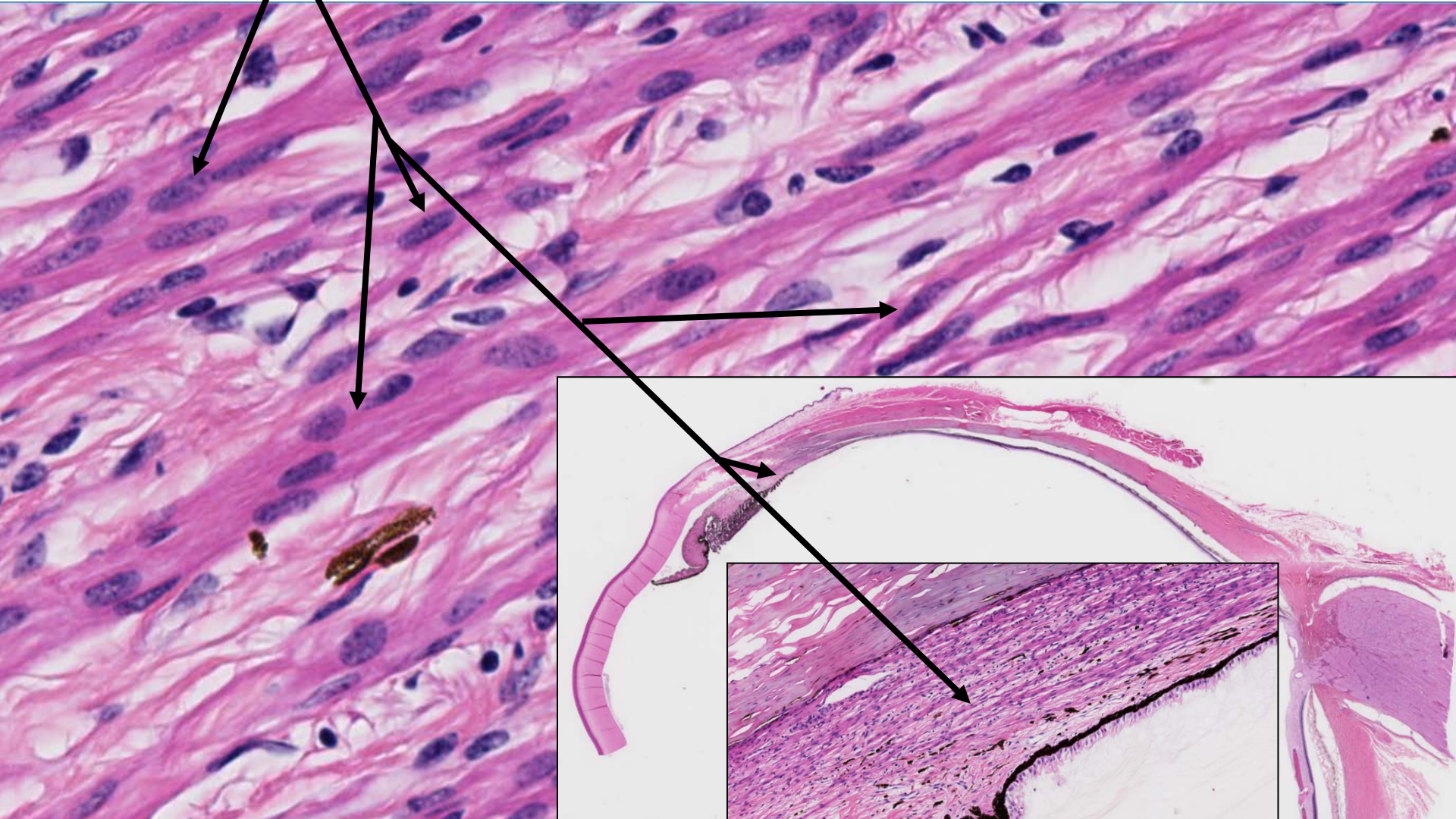


Demo Slide 22b-Eye, Cow

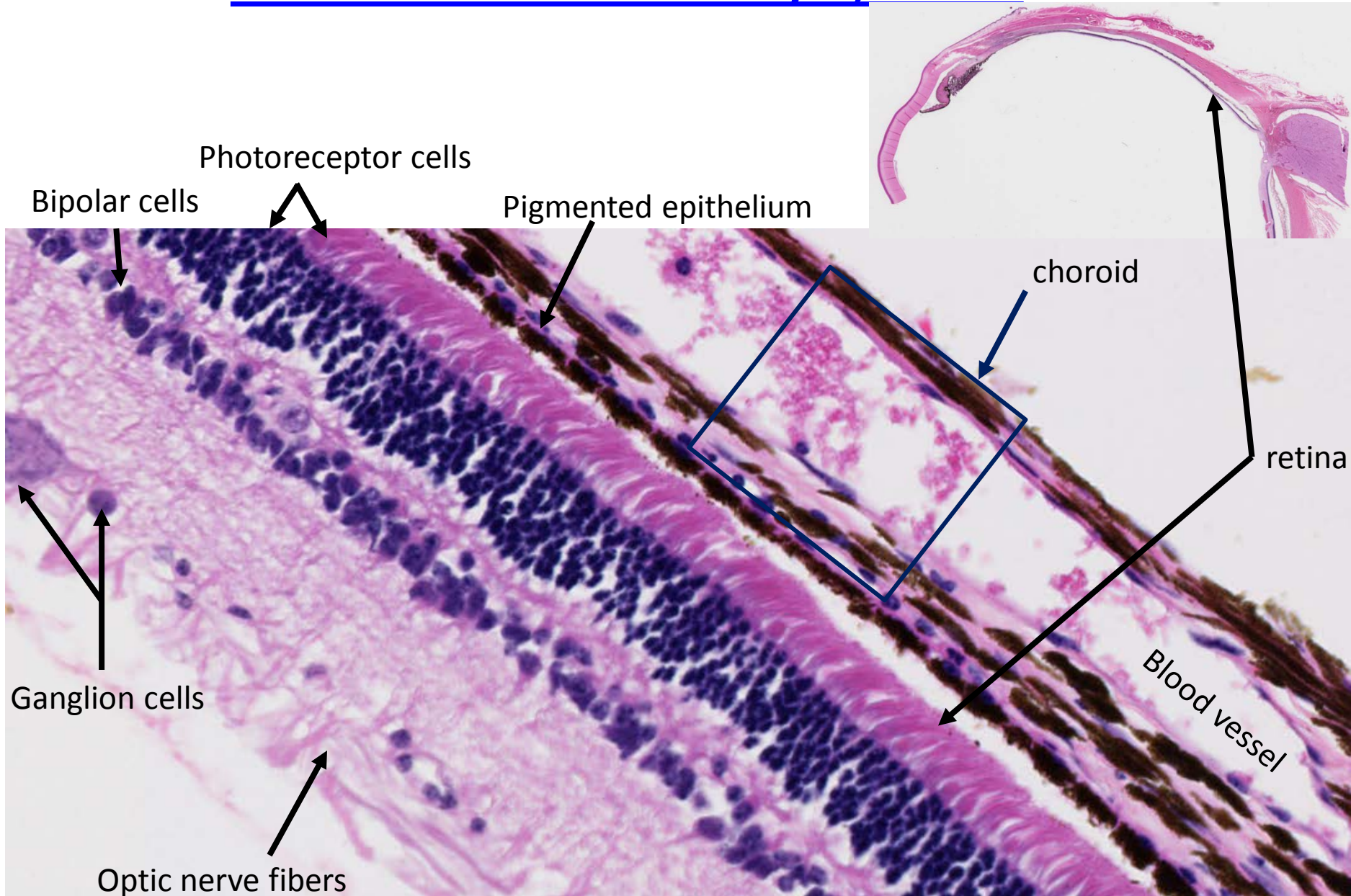


Demo Slide 22b-Eye, Cow

Smooth muscle cells



Demo Slide 22b-Eye, Cow



Demo Slide 22b-Eye, Cow

