

# Laboratory exercises for Spinal cord

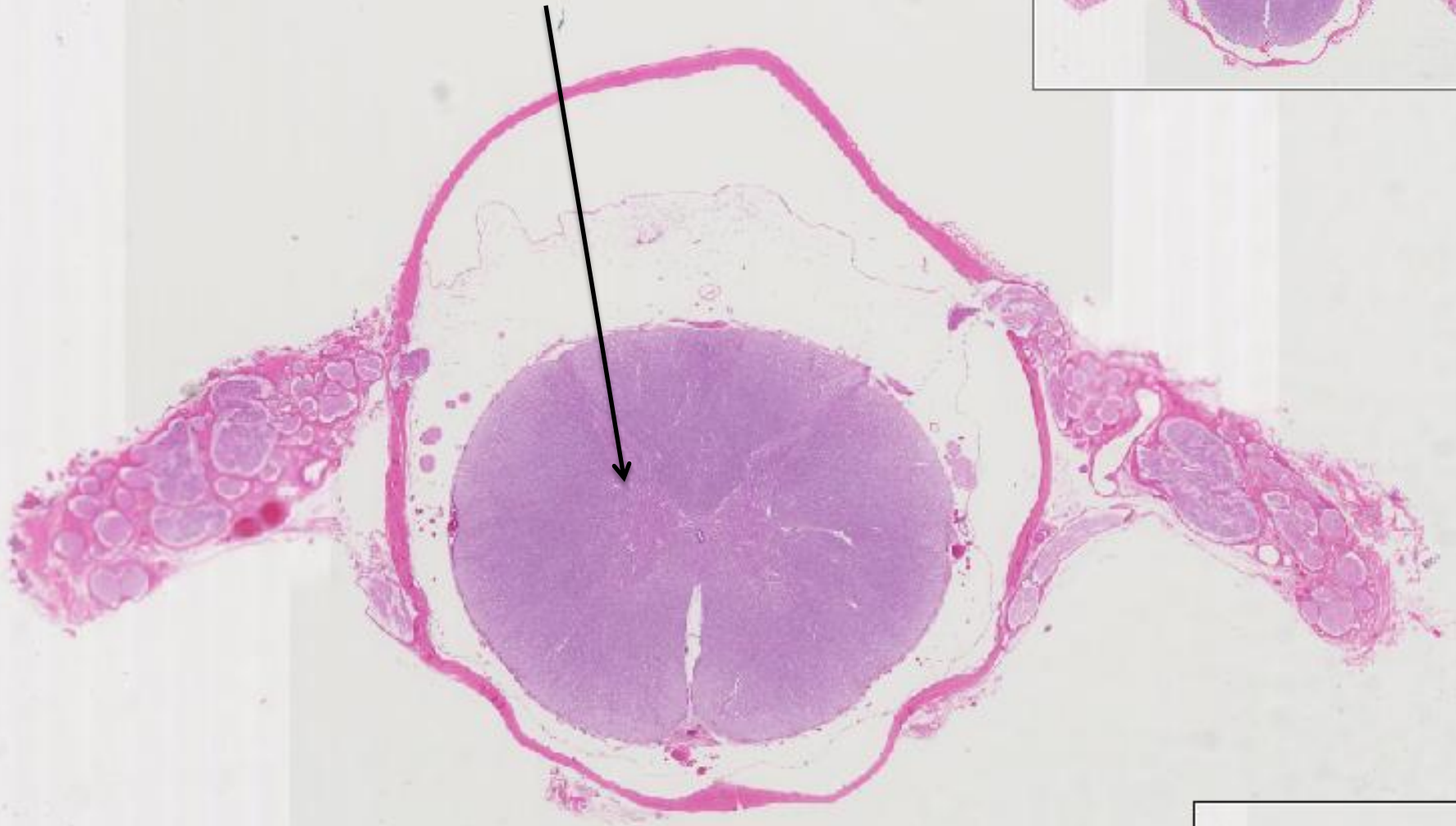
[Slide #200 \(Ed904-196&184\). Spinal cord, dorsal root ganglion, donkey.](#)

“H”. This is the gray matter



Slide #200 (Ed904-196&184). Spinal cord, dorsal root ganglion, donkey.

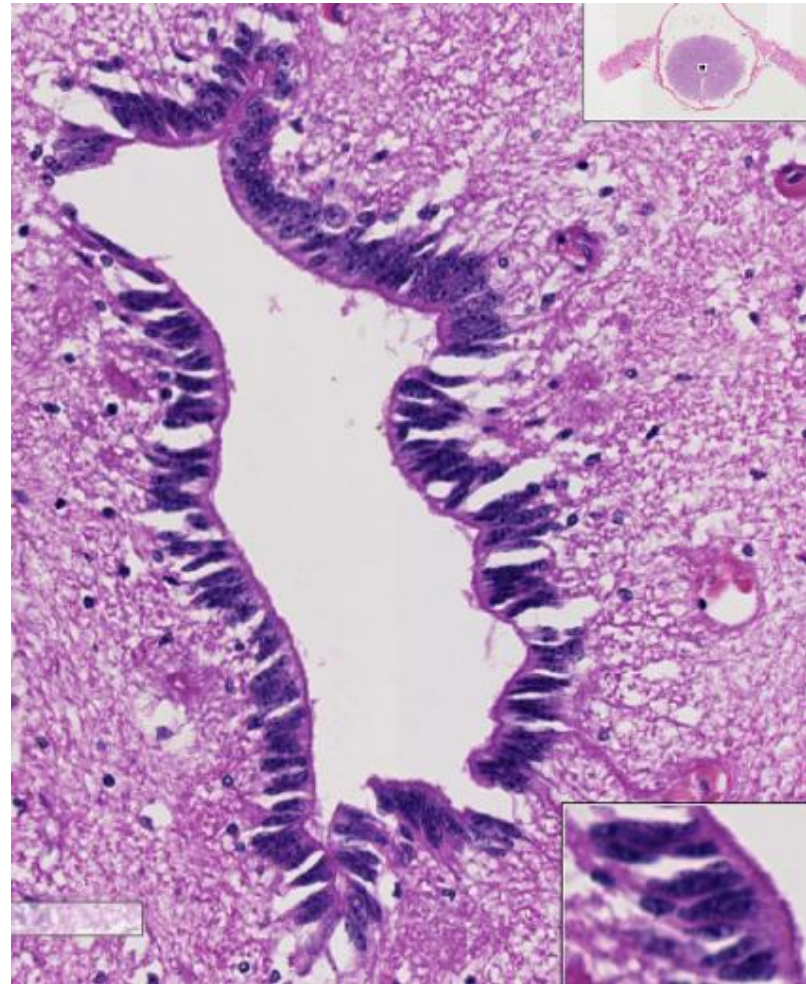
“H”. This is the gray matter



Slide #200 (Ed904-196&184). Spinal cord, dorsal root ganglion, donkey.

central canal and is lined by simple cuboidal-columnar cells, the ependymal cells with cilia

ependymal cells line the lumen of the ventricles of the brain, which are continuous with the central canal of the spinal cord.

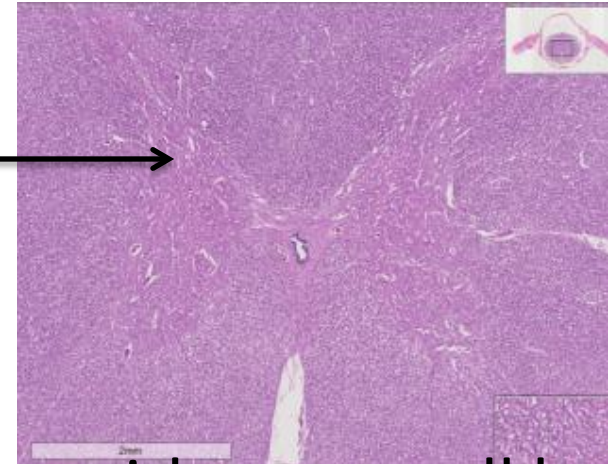




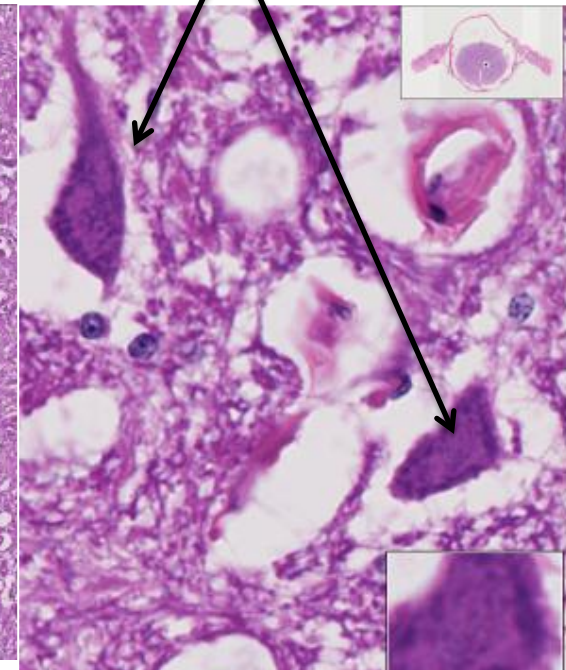
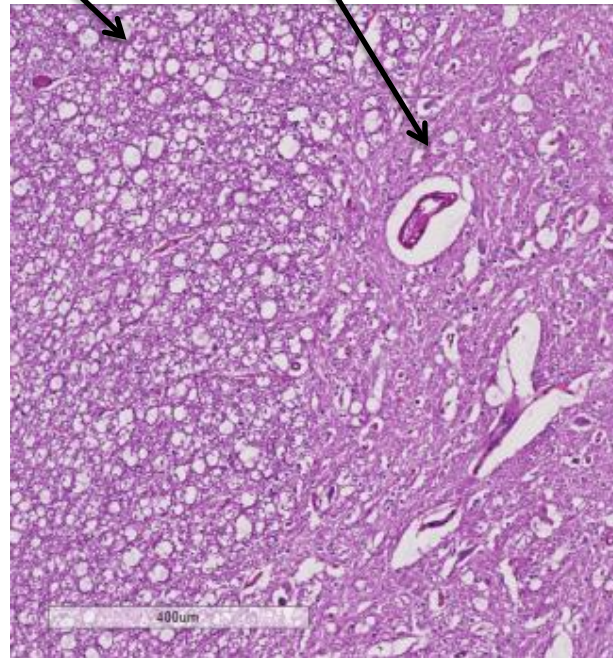
Slide #200 (Ed904-196&184). Spinal cord, dorsal root ganglion, donkey.

tissue surrounding the "H" is the white matter and contains support cells (i.e. the small nuclei) and myelinated axons but not neuronal cell bodies

H →



Grey matter with nerve cell bodies



Slide #200 (Ed904-196&184). Spinal cord, dorsal root ganglion, donkey.

The dense CCT outside the spinal cord is the dura mater. The pia mater is on the surface of the cord. The arachnoid is partially adhered to the pia and partially separated from it.

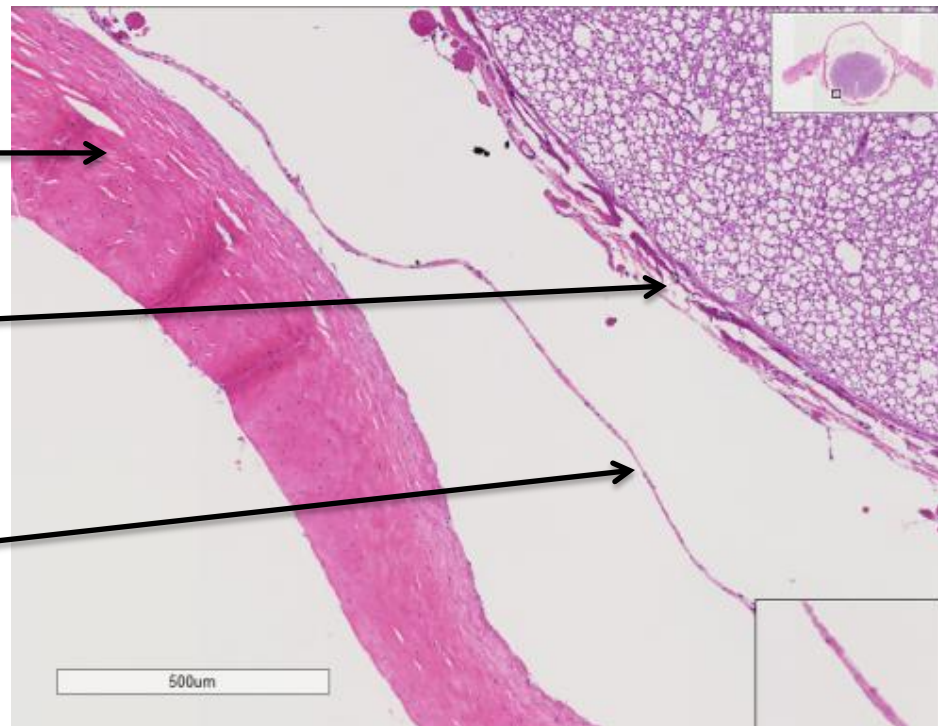
dura mater



pia mater



arachnoid



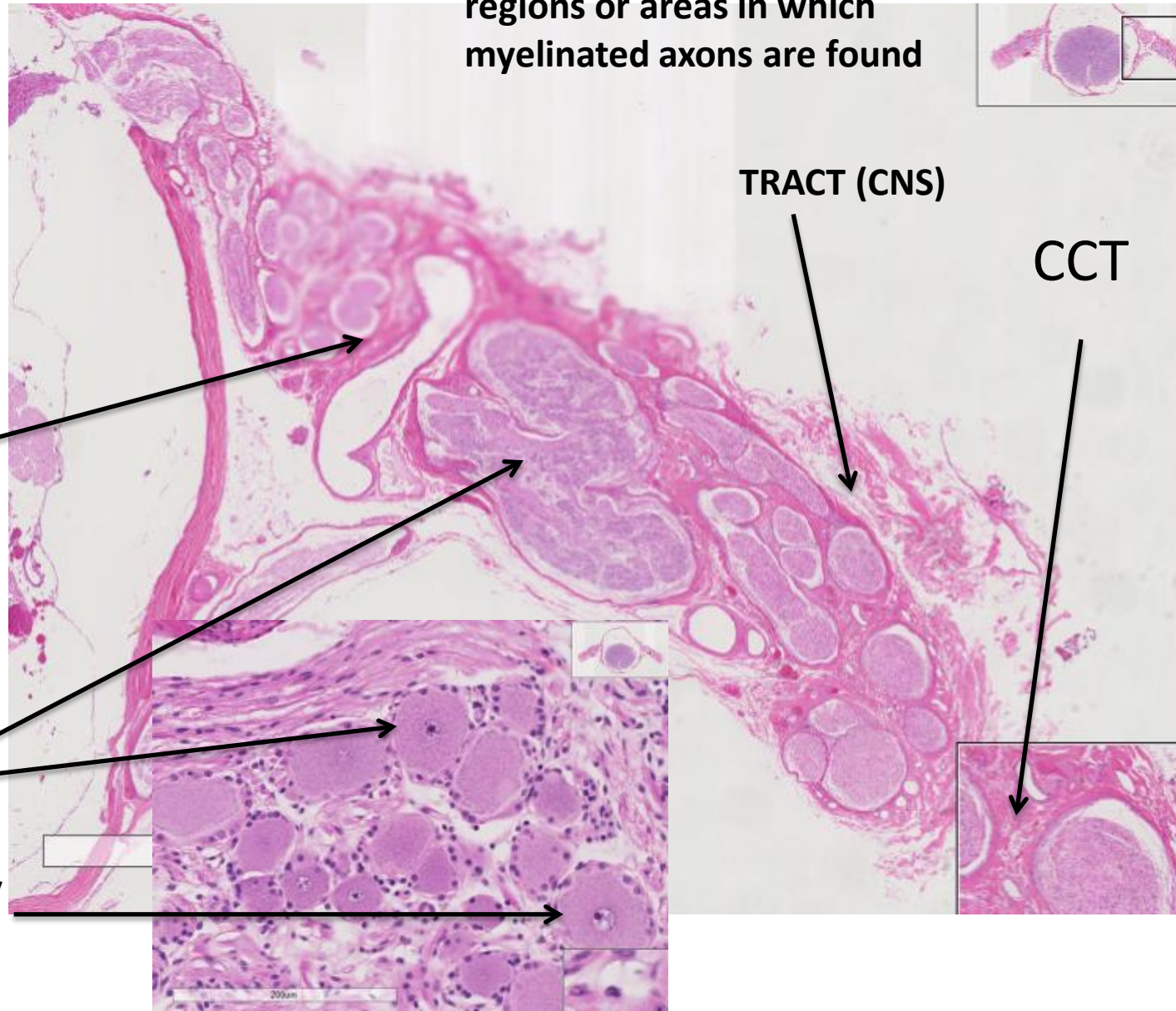


# Slide #200 (Ed904-196&184). Spinal cord, dorsal root ganglion, donkey.

**WHITE MATTER (CNS) =  
regions or areas in which  
myelinated axons are found**

two tissue  
types  
located  
outside the  
dura are  
nerve  
and CCT

CRANIOSPINAL  
GANGLION  
of dorsal root, sensory

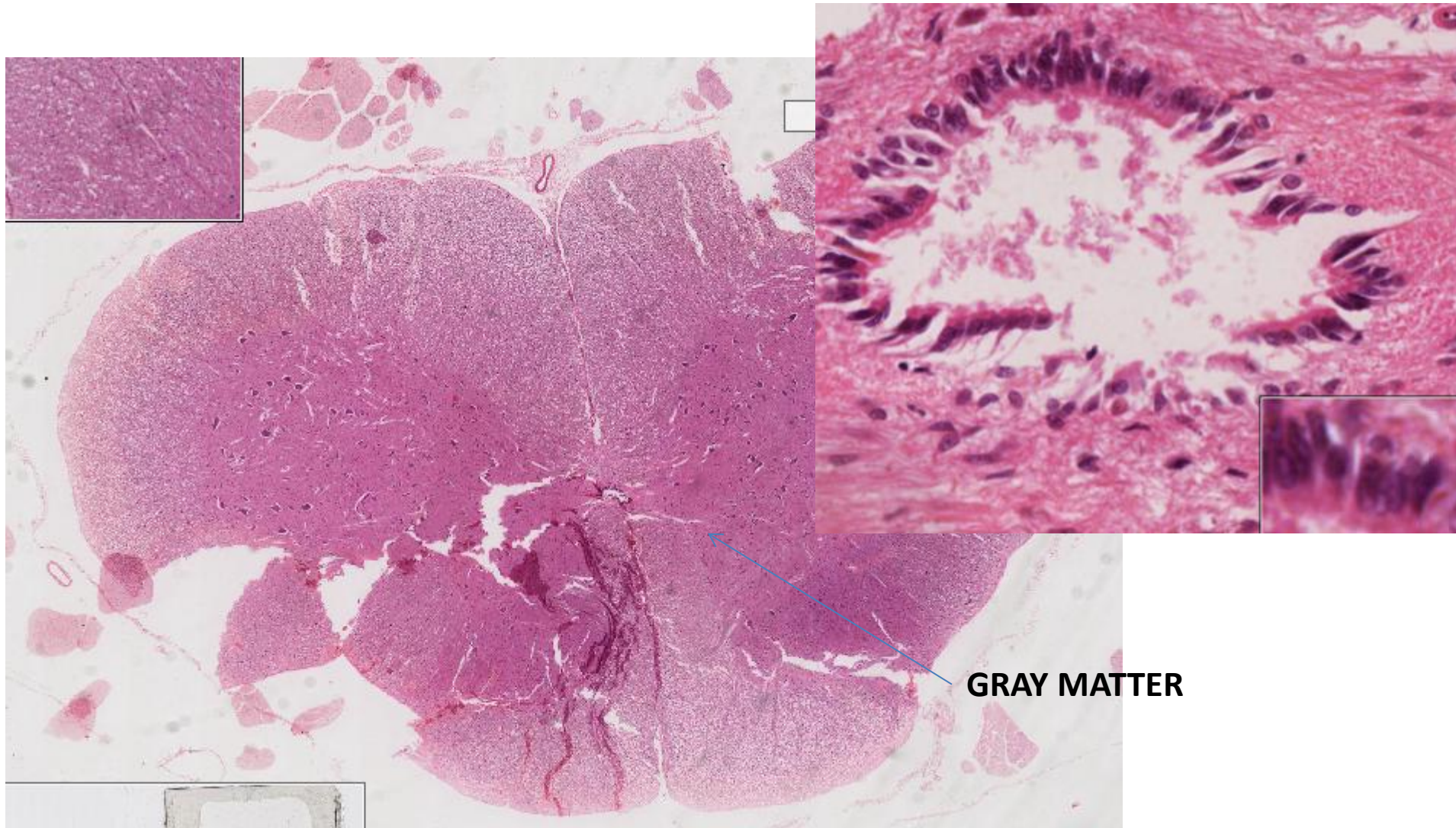


TRACT (CNS)

CCT

200 μm

# DEMO SLIDE BOX 75. Spinal cord, cat.





# DEMO SLIDE BOX 75. Spinal cord, cat.

20x



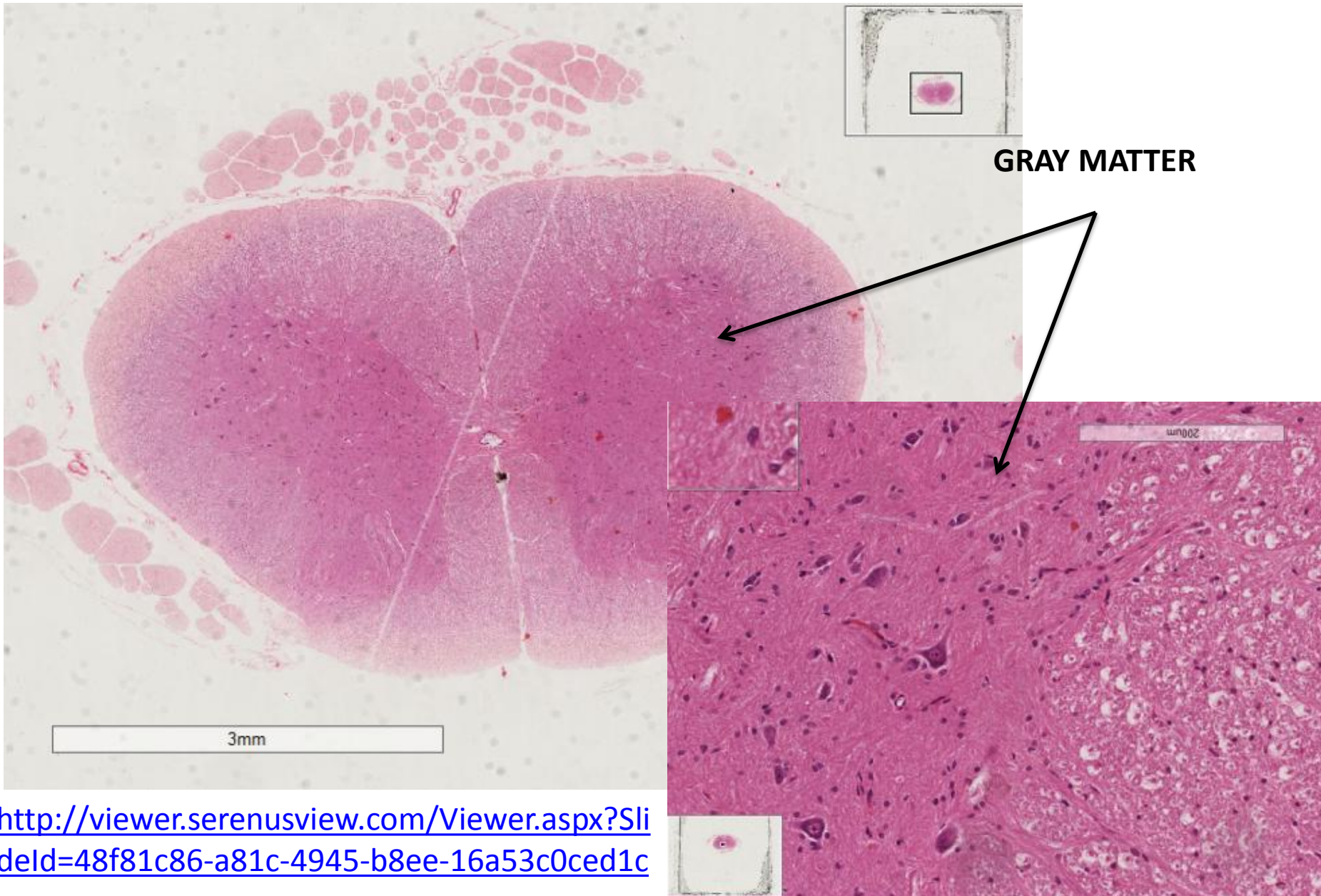
GRAY MATTER

SIMPLE COLUMNAR (OR CUBOIDAL)  
[EPITHELIUM]



# DEMO SLIDE BOX 75. Spinal cord, cat.

20x

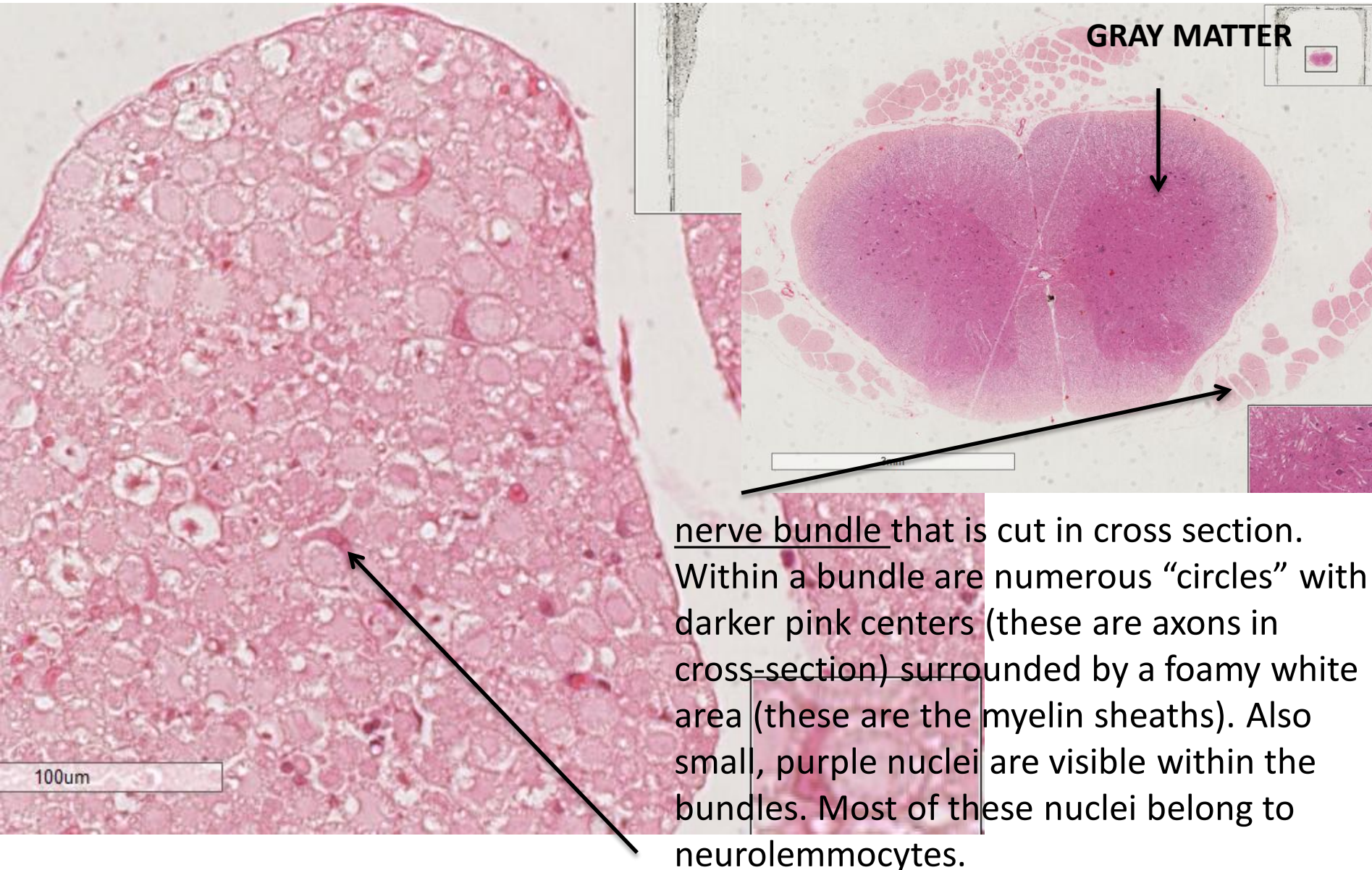


<http://viewer.serenusview.com/Viewer.aspx?SlideId=48f81c86-a81c-4945-b8ee-16a53c0ced1c>



# DEMO SLIDE BOX 75. Spinal cord, cat.

20x



nerve bundle that is cut in cross section. Within a bundle are numerous “circles” with darker pink centers (these are axons in cross-section) surrounded by a foamy white area (these are the myelin sheaths). Also small, purple nuclei are visible within the bundles. Most of these nuclei belong to neurolemmocytes.