

Proteasome, Transporter Associated with Antigen Processing, and Class I Genes in the Nurse Shark *Ginglymostoma cirratum*: Evidence for a Stable Class I Region and MHC Haplotype Lineages¹

Yuko Ohta,* E. Churchill McKinney,[†] Michael F. Criscitiello,[‡] and Martin F. Flajnik^{2*}

Cartilaginous fish (e.g., sharks) are derived from the oldest vertebrate ancestor having an adaptive immune system, and thus are key models for examining MHC evolution. Previously, family studies in two shark species showed that classical class I (*UAA*) and class II genes are genetically linked. In this study, we show that proteasome genes *LMP2* and *LMP7*, shark-specific *LMP7-like*, and the *TAP1/2* genes are linked to class I/II. Functional *LMP7* and *LMP7-like* genes, as well as multiple *LMP2* genes or gene fragments, are found only in some sharks, suggesting that different sets of peptides might be generated depending upon inherited MHC haplotypes. Cosmid clones bearing the MHC-linked classical class I genes were isolated and shown to contain proteasome gene fragments. A non-MHC-linked *LMP7* gene also was identified on another cosmid, but only two exons of this gene were detected, closely linked to a class I pseudogene (*UAA-NC2*); this region probably resulted from a recent duplication and translocation from the functional MHC. Tight linkage of proteasome and class I genes, in comparison with gene organizations of other vertebrates, suggests a primordial MHC organization. Another nonclassical class I gene (*UAA-NC1*) was detected that is linked neither to MHC nor to *UAA-NC2*; its high level of sequence similarity to *UAA* suggests that *UAA-NC1* also was recently derived from *UAA* and translocated from MHC. These data further support the principle of a primordial class I region with few class I genes. Finally, multiple paternities in one family were demonstrated, with potential segregation distortions. *The Journal of Immunology*, 2002, 168: 771–781.

Major histocompatibility complex class I and class II molecules are fundamental components of the adaptive immune system. Antigenic peptides, bound and presented to T cells by class I molecules, are produced by the cytosolic proteasome. In mammalian cells stimulated by IFN- γ , three components of the constitutive catalytic proteasome core, X/PSMB5/ β 5, Y/ δ /PSMB6/ β 1, and Z/PSMB7/ β 2, are replaced by *LMP7/PSMB8/ β 5i*, *LMP2/PSMB9/ β 1i*, and *MECL-1/PSMB10/ β 2i*, respectively, to produce immunoproteasomes, which are believed to generate peptides suitable in length and sequence for binding to class I molecules (2–4). Peptides transported into the endoplasmic reticulum via a heterodimer of TAP proteins are loaded onto class I molecules, which then are competent to be expressed at the cell surface (5).

In eukaryotes, one of the first examples of genetic linkage between functionally related, yet structurally unrelated loci was shown for the class I Ag pathway genes, *LMP2*, *LMP7*, *TAP1*, and *TAP2*, which are closely linked and encoded in the MHC of all vertebrates studied to date (6–17). In mammals, these genes are

located in the class II region, while both classical and nonclassical class I genes are encoded in another region of the MHC. The MHC organization of chickens (11) and all teleost fish (9, 13–16) examined is quite different from mouse and human: classical class I genes are closely linked to proteasome and transporter genes (except in chicken, the inducible proteasome elements have been deleted from the MHC and perhaps from the genome entirely). Such close linkage among class I and the functionally related proteasome and transporter genes has been proposed to be a true class I region, which may allow coevolution of these components (9–11). The class I region in teleosts is further highlighted because class II genes are found in another region of the genome entirely, so that there are actually (at least) two MHCs in the bony fish (14, 18). Because class I is closely linked to proteasome/transporter genes in all nonmammalian species studied to date, it is likely that this MHC organization is primitive.

In addition to differences in MHC genomic organization in birds and teleosts, suggesting coevolution of class I pathway genes, there are lineages of *TAP* alleles that have coevolved to function with sets of class I alleles in the rat (19), hamster (20), and probably the chicken (11, 21). In the frog, *Xenopus* allelic lineages of *TAP* and *LMP7* are linked to particular class I lineages (22–24). Coevolution of the proteases, transporters, and presenting molecules in the class I Ag presentation pathway may be the selecting force to preserve linkage of the genes in many vertebrate species. Consistent with this idea is the relatively low number of class I genes that are linked to the MHC proper in most nonmammalian vertebrates (excluding the cichlid (25, 26), the axolotl (27, 28), and perhaps the cod (29)), i.e., a stable class I region.

Cartilaginous fish (sharks, skates, rays, and chimeras) are derived from the oldest vertebrate ancestor with an adaptive immune system, and as such are important models for study of the MHC

*Department of Microbiology and Immunology, University of Maryland School of Medicine, Baltimore, MD 21201; [†]Department of Microbiology and Immunology, University of Mississippi School of Medicine, Jackson, MS 39216; and [‡]Department of Microbiology and Immunology, University of Miami School of Medicine, Miami, FL 33101

Received for publication May 2, 2001. Accepted for publication November 2, 2001.

The costs of publication of this article were defrayed in part by the payment of page charges. This article must therefore be hereby marked *advertisement* in accordance with 18 U.S.C. Section 1734 solely to indicate this fact.

¹ This work was supported by National Institutes of Health Grant AI27877.

² Address correspondence and reprint requests to Dr. Martin F. Flajnik, Department of Microbiology and Immunology, University of Maryland School of Medicine, 655 West Baltimore Street, BRB Room 13-009, Baltimore, MD 21201. E-mail address: MFlajnik@som.umaryland.edu

A

Human-LMP2	MLRAGEVHTG
Mouse-LMP2	MLRAGAPTAGSF-TE----
Xenopus-LMP2	MPASRNPHYT-R--S--
Fugu-LMP2	MLEEPGPE-LSE--T--
Trout-LMP2	MLDESLEPGWLS--K--
Zebrafish-LMP2A	MSEELFPEPGWLS--K--
H-Shark-LMP2	MPHYSWSPGCPSS--R--
N-Shark-LMP2	MSQYSRNPGCTSL--K--
Fugu-LMP2/δ	MEKPYMNAQVKG-S--
Trout-LMP2/δ	MERNLIDSLQKGS--
Zebrafish-LMP2/δ	MDRHHFYSQVNG-S--
Human-δ	MAATLLAARGAGPAPAWGPEAFTPDWESR--S--
Mouse-δ	MTAALSVRRRAGSAPAFGPEALTPDWENR--S--
Xenopus-δ	MKLLQAAAAGPQSSAPPDGTDMGR--S--
Zebrafish-δ	MASTLNNYNDLCPDWTR--S--
Lamprey-δ	MRTHAQGATRAAFGLSSAAPDWTSA--L--

+1

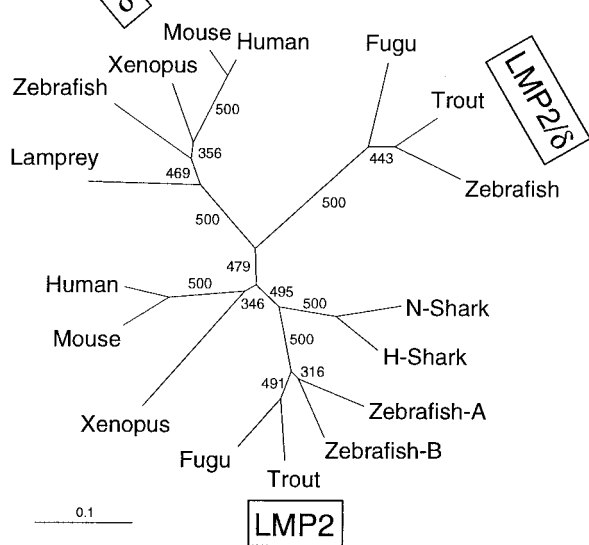
Human-LMP2	TTIMAVEFDGGVVMGSDSRVSAGE . AVVNRVPDKLSPLHERIYCALSGSAADAQAVADMAAYQLELHGIEL
Mouse-LMP2	-----V-----T-----I-----L-----
Xenopus-LMP2	-----I-----L-----D-----N--A-V-Q-----H--H-M-V-S--M
Fugu-LMP2	-----I-----D-----L-----K-----M-N-----D-K-----T-I-E-V-N--D-V-S-V-I
Trout-LMP2	-----I-----I-----L-----T-----M-N-----L--D-K-----T-I-E-V-N--D-V-S-V
Zebrafish-LMP2A	-----I-----T-----I-----S-----M-N-----D-K-----T-I-E-V-N--D-V-S-V
H-Shark-LMP2	-----I-----I-----I-----C-----M-N-----V-----I--S-V-N-----S-V
N-Shark-LMP2	-----I-----I-----I-----I-----C-----M-N-----D-----I--S-V-N-----S-T
Fugu-LMP2/δ	-----L-AT-----I-----A-M-GEY--SSKTIN-VIKV-D--F-CMA--L-----TKA-KFH-SF-SVQM
Trout-LMP2/δ	-----L--T-N--II-----A-I-GYY--SSKTIN--IQV-D--F-CIA--L-----TKA-KF-ISF-S-QM
Zebrafish-LMP2/δ	-----IL-----N--II-----A-M--SY--SSKTIN--IQV-D--F-CIA--L-----TK--KF--SF-S-QM
Human-δ	-----Q-----L-A-----T-TT-S.YIA-----T--I-D--F-CR-----T-----AVT--GF-S--
Mouse-δ	-----T-Q-N-----L-A-----T-TT-S.YIA-----T--I-DH-F-CR-----T-----T-AVT--GF-S--
Xenopus-δ	-----I-A-----T-TT-A.YIA-----T-----T-V-D--F-CR-----T-----I--AVT--GF-S--
Zebrafish-δ	-----A-----T-TT-A.YIA-----T-----T-I-D--F-CR-----T-----I--AVT--GF-S--
Lamprey-δ	-----AD--F-A--TT--S.Y-A--T-----T-V-D--F-CR-----T--I--V-VN--GF-S--M

←

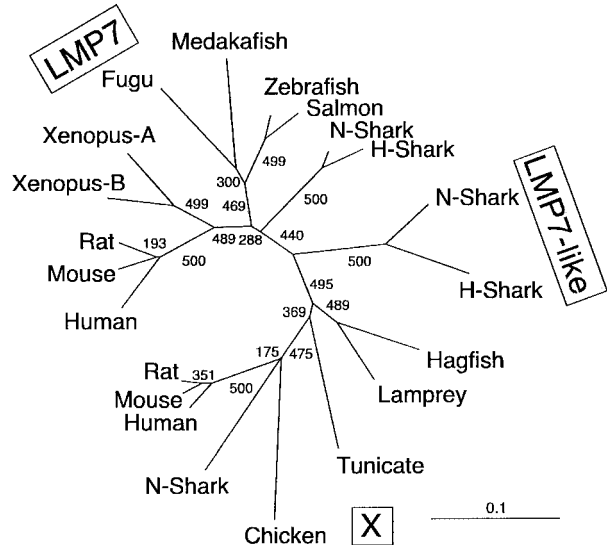
Human-LMP2	EPPPLVLAANVVRNISYKYREDLSAHLMVAGWDQREGGQVYG . TLGGMLTRQPPAIGGSGSTFIYGVDA
Mouse-LMP2	-----K-----L-----I-----C-----M-----I-----T-----S-Y-----
Xenopus-LMP2	-----A-----L-I-K-G-----K-E-I-M-----I-----R-K-H-----I-I-----T-----V-----F--S
Fugu-LMP2	G-D--VRS--L-K-----K-E-M-----I-----K-R-K-----FA--N-L-S-----S-V-F--
Trout-LMP2	G-D--Q-RS--TL-K-----K-E-----I-----K-G-----V--N-L-S-----S-V-F--
Zebrafish-LMP2A	DD--CS--TL-K-----K-E-----I-----K-G-----A--S-L-TK-----F-Y-N-F--
H-Shark-LMP2	DDA--R--SM-K-----K-E-----I-----R-K-K-----A-----V-----V-----V-Y--
N-Shark-LMP2	GDA--Q--S--K-----K-E-T-----I-----R-K-K-----A-----I-I-----S-V-----F-Y--
Fugu-LMP2/δ	-----T--IS--S-LKELC-QNK-E-Q-GFIT--S-K-P--VVA-----V--VT-----S-Y-----
Trout-LMP2/δ	-----S--K--S-LKELC-NNK-E-Q-GFIT--R-K-K--P--TVA-----LS--T-----Y--A--
Zebrafish-LMP2/δ	-----S--K--S-LKELC-SNK-E-R-GFIT--R-K-K--P-I-VVS-----LS--T-----Y--A--
Human-δ	N-----HT--SLFKEMC-R-----M-GIII--PQ-----G-SVPM--MV--S-----S-Y-----
Mouse-δ	N-----HT--SLFKEMC-R-----M-GIII--PQ-----G-SVPM--MV--S-----S-Y-----
Xenopus-δ	DG-----HT--LFKEMC-R-----M-GII--K-K-----TVPV--VH-Q-S-----S-Y--F--S
Zebrafish-δ	D-A--QT--SLF--DMC-R-----E-M-GII--R-R-----TVPV--VSV-----S-Y--F--S
Lamprey-δ	--M--HT--LFKDYC-R-----E-M-GII--K-K-----TVP--V-----SV-----TY--F--S

Human-LMP2	AYKFGMSPECRRFTTDAIALAMSRDGS SGGVIYLVITTAAGVDHRVILGNELPKFYDE	70%
Mouse-LMP2	-----T-----T-----T-----N-----D-----D-----	69
Xenopus-LMP2	KF--R--R--E--AVQ-LS--E-----V-KE-TKDSI-S-DSI-R--NL	67
Fugu-LMP2	E-RK--K--AQQ-VVNTLS--N-----A-I-----DEHNABEK--D--T-F-Q	69
Trout-LMP2	E-RKA--K-D-QQ-VVNTLS--G-----A-V-----DEK-ABEKC-----T--Q	69
Zebrafish-LMP2A	E--KN-TKR--QE-VVNLT--G-----A-V-----DKD-TBEKCV-----F--	73
H-Shark-LMP2	--A--KD--L--V-N--T--IG-----TA-AEKATE-K-----Q-H--	87
N-Shark-LMP2	T--EE--KD--LT-VIN--T--IG--A--V--T--EK-TE-KI-P-----Q-H--	
Fugu-LMP2/δ	K--N--R--LQ-A-N-L--G--NV--AN--V--ET--E-L-VP-DK--R-H--	56
Trout-LMP2/δ	K--D--K--LQ-A-N-L--G--NV--AH--V--EE--E-I--P-DK--H--	58
Zebrafish-LMP2/δ	KF--D-TL--ATQ-S-N-L--G--NV--VH--V--E--K-I-VP-D--H--	55
Human-δ	T-RE--TK--LQ--AN-L--E-----R-AA-AES--ERQ-L--DQI--AVATLPPA	55
Mouse-δ	T-RE--TKD--LQ--AN-L--E-----R-AA-QES--ERQ-L--DQI--TIATLPPP	54
Xenopus-δ	T-R--TK--LK--AN-L--E-----R-AA--EE--ERQ--Q--R-PSS	59
Zebrafish-δ	N-RS--K--LK--AG-LT-P-E-----VR-AV-SEQ--ERQA--Q--Q-STV	62
Lamprey-δ	N--T--TK--ME--AK-LS-----RMAA--G--ER--LT-KDI-T--E-	57

B



C



(7). Previously, we have shown that, in contrast to teleost fish, class I and class II genes are closely linked in sharks (1). In addition, previous work demonstrated the existence of *TAP1*, *TAP2* (30), *LMP7* homologues (31), and a proteasome gene unique to the cartilaginous fish, called *LMP7-like* (31). Based on differences in their catalytic sites, it was suggested that proteasomes containing *LMP7* or *LMP7-like* might provide a diverse repertoire of peptides for class I molecules, consistent with the idea that certain class I alleles could bind peptides preferentially produced by one or the other enzyme. In this study, we begin to focus on whether the class I region found in all teleosts and chickens (and probably amphibians) exists in cartilaginous fish by investigating the linkage between class I and class I-related genes (*LMP2*, *LMP7*, *LMP7-like*, *TAP1*, and *TAP2*). We also analyze the number of class I genes and their linkage to each other and to other MHC-encoded genes.

Materials and Methods

Animals

A pregnant nurse shark (*Ginglymostoma cirratum*, order *Orectolobiformes*) was captured off Little Torch Key, FL, in October 1998, and 39 pups were delivered by Caesarean section (1). Nurse sharks are ovoviviparous, i.e., maintain their young within the uterus, where they are nourished by egg yolk; the size of the yolk sac was an indication of the pups' ages (32). Shark Yellow used for preparation of the cosmid library is maintained in an outdoor facility in Miami, Florida, with running seawater.

LMP2 isolation

PCR via 5' RACE with a degenerate primer was performed to isolate the *LMP2* gene. The primer 5'-GCRTCACACTWNCRTADAT-3', in which R is A or G, N is A or G or C or T, W is A or T, D is G or A or T (aa position 135–141 (33), Fig. 1A), and the T3 primer on the Uni-ZAP phage vector (Stratagene, La Jolla, CA) were used with a horn shark (*Heterodontus francisci*) spleen cDNA library as template (34). PCR was performed for 4 min at 94°C, followed by 35 cycles of 94°C for 30 s, 45°C for 1 min, 72°C for 1 min, and a final extension at 72°C for 15 min. A single 600-bp fragment was amplified, cloned into the pCR2.1 TA cloning vector (Invitrogen, San Diego, CA), and sequenced.

cDNA library screen

The 600-bp *LMP2* PCR fragment was used to screen the horn shark spleen cDNA library. This horn shark library was also screened with the full-length nurse shark *LMP7* probe (accession D64057). A full-length *LMP2* insert was used to probe a nurse shark spleen cDNA library prepared from siblings 34 and 37 (35). This nurse shark spleen cDNA library was also screened with horn shark *TAP2* (AF108387, AF108386) and *TAP1* (AF108385) (30) to obtain the orthologous nurse shark cDNAs, and with nurse shark nonclassical class I (*UAA-NCI*, 1) using a probe encoding the $\alpha 1$ and $\alpha 2$ domains (AF220360) to obtain full-length clones. All library screenings were done under high stringency conditions (34).

Sequence alignment and phylogenetic tree

The mature *LMP2* and *LMP7* protein sequences were aligned using Clustal W with minor adjustments, and an unrooted tree was made using the Tree-View 1.5 program (36).

Southern blotting

A total of 1–3 ml blood was collected from each pup from the caudal vein, and DNA was prepared from nucleated erythrocytes, as described previ-

ously (37). Genomic DNA (5 μ g) was digested with various restriction enzymes (RE)³ to obtain useful restriction fragment-length polymorphism (RFLP). Full-length nurse shark cDNA inserts were used as probes, except for *TAP2* (it lacked the region encoding the N-terminal 160 aa (30)) and *UAA-NCI* (the $\alpha 1$ domain exon was used), and all hybridizations were performed under high stringency conditions.

Cosmid library screening

The nurse shark erythrocyte genomic DNA cosmid library prepared from shark Yellow was custom-made (SuperCos1 cosmid library; Stratagene) and has average insert sizes of ~40 kb. Membranes from library lifts were prepared per the manufacturer's recommendation with minor modifications (38), and ~800,000 clones were screened with the full-length nurse shark *LMP7* (D64057 (31)) or class Ia probes (*UAA01*: AF220063 (1)) under high stringency conditions.

Restriction mapping and subcloning

The cosmid clone 32 was digested with *Bam*HI, *Sac*I, *Sma*I, *Xba*I, and all possible combinations of two enzymes, and *Cla*I, *Sma*I, *Bam*HI, and *Sca*I were used for digestion of cosmids 19 and 65. Gels were stained with ethidium bromide to visualize DNA fragments and then blotted onto nitrocellulose membranes. Membranes were sequentially hybridized with either ³²P-labeled double-strand probes (labeled with the random-primed labeling method; Boehringer Mannheim, Indianapolis, IN) or end-labeled exon-specific oligonucleotides to identify the digested fragments. Cosmid DNAs were also partially digested with RE and hybridized with end-labeled T3 or T7 oligomers to construct restriction maps. The *LMP7*-positive *Bam*HI-*Xba*I 4.5-kb fragment (cosmid 32) and the *Cla*I-*Sma*I 1.9-kb fragment (cosmid 65) were subcloned into the pBluescript cloning vector and sequenced to identify the exons. For comparison with hybridizing genomic DNA fragments, 10 μ g of cosmid DNA was digested with 15 U of RE for 3 h, and digests were checked on a 1% agarose gel and diluted to convenient concentrations; ~50 ng of cosmid DNA was loaded onto the gel compared with 5 μ g of genomic DNA. A class I $\alpha 1$ domain-specific primer (5'-TCTCACAGTCTCCGGTATT-3') and a highly conserved $\alpha 3$ domain primer (5'-CCATCGTGATCCACCACACA-3') were used to amplify the class I sequence from the cosmid 32 DNA; PCR was performed for 4 min at 94°C, followed by 35 cycles of 94°C for 1 min, 56°C for 1 min, 72°C for 3 min, and a final extension at 72°C for 15 min. A 1.5-kb fragment was amplified, cloned into pCR2.1 TA cloning vector, and sequenced.

PCR of genomic DNA

To obtain the transmembrane/cytoplasmic region genomic sequence for the *UAA-NCI* gene, a *UAA/UAA-NCI* exon 5 primer, 5'-TGAACCAAAGAC CAGCTC-3', and a *UAA-NCI*-specific exon 6 primer, 5'-TGGATTG TAGCCAGTCTC-3', were used. PCR was performed at 94°C for 4 min, followed by 35 cycles of 94°C for 1 min, 52°C for 1 min, and 72°C for 3 min, with final extension of 72°C for 15 min using 2–500 ng "mother" genomic DNA as template. A 1-kb product was cloned into pCR2.1 TA cloning vector (Invitrogen) and sequenced. To obtain the *UAA* transmembrane/cytoplasmic genomic sequence, PCR was performed using cosmid 65 DNA as template. The same exon 5 primer was used as the forward primer with a *UAA*-specific reverse primer: 5'-AAGCTTAAATCAG CAGGT-3'. PCR was performed as above. The 2.5-kb product was cloned into the pCR2.1 TA cloning vector and sequenced. The PCR-amplified fragment for *UAA* exon 5 and intron 5 of cosmid 19 was also sequenced.

³ Abbreviations used in this paper: RE, restriction enzyme; RFLP, restriction fragment-length polymorphism; UTR, untranslated region.

FIGURE 1. A, Comparison of the amino acid sequence of nurse shark (N-shark) (AF357920) and horn shark (H-shark) (AF357921) *LMP2* with *LMP2* from human (U01025), mouse (D43620), *Xenopus* (D87687), trout (AF115541), *Fugu* (AJ271723), and zebrafish (*LMP2A*: AF155579, *LMP2B*: AF155580); *LMP2/δ* from *Fugu* (AJ271723), trout (AF115540), and zebrafish (AF155576); and with δ from human (D29012), mouse (U13394), *Xenopus* (D87689), zebrafish (AF032392), and lamprey (D87690). Dashes and dots show sequences identical to human *LMP2* and gaps, respectively. The mature protein begins at +1, and the primer position used for 5' RACE is indicated with an arrow above the sequence. The percentage of similarity to nurse shark *LMP2* is shown at the end of each sequence. B, *LMP2* phylogenetic tree using the mature protein. The scale shows the genetic distance. Bootstrap values were obtained with a total of 500 runs and are shown at the branches. C, *LMP7/X/LMP7-like* phylogenetic tree using the mature protein. GenBank accession numbers are human (Z14982), mouse (U22033), rat (P28064), *Fugu* (AJ271723), zebrafish (AF032390), N-shark (D64057), salmon (AF184938), *Xenopus7B* (I51537), *Xenopus7A* (I51536), H-shark (AF363583) *LMP7*, N-shark (D64056), H-shark (AF363582) *LMP7-like*, hagfish (D64054), lamprey (D64055), medakafish (D89725), tunicate (X97729), nurse shark (D64058), human (P28074), mouse (O55234), rat (P28075), and chicken (X57210) X. Scale as in B.

Northern blotting

RNA was isolated from various tissues using the TRIzol reagent (Life Technologies, Rockville, MD). Total RNA (20 μ g) was electrophoresed in 1% agarose gels using MOPS as running buffer (Quality Biologicals, Gaithersburg, MD), and then transferred to an Optitran nitrocellulose membrane (Schleicher & Schuell, Keene, NH). The membranes were hybridized with *UAA* 3' untranslated region (UTR), *UAA-NCI* (α 1 domain and intron 2), and nucleoside diphosphate kinase probes (39) on the tissue distribution blot. The 3' UTR of *LMP7* and *LMP7-like* were used as probes with RNA made from PBL of 8 sibling sharks, shark Yellow, and 11 wild animals. All blotting was done under high stringency conditions (34).

RT-PCR

cDNA was prepared from 5 μ g of total RNA from shark Yellow PBL with the Superscript preamplification system for first-strand cDNA synthesis kit (Life Technologies). PCR was then performed by 3' RACE using a *UAA* α 1 domain forward primer, 5'-TCTCACAGTCTCCGGTATTT-3', and the RACE reverse primer, 5'-CTCGAGAAGCTTGAATTCGGATCC-3' at 94°C for 4 min, followed by 35 cycles of 94°C for 1 min, 55°C for 1 min, 72°C for 4 min, and 72°C for 15-min final extension. A 1.7-kb single band was cloned into pCR2.1 TA cloning vector (Invitrogen) and sequenced.

Results

Isolation of shark *LMP2* and horn shark *LMP7-like*

A 600-bp PCR product was amplified by 5' RACE from a horn shark spleen cDNA library with a primer specific for *LMP2* genes (33). The sequence of this product showed high similarity to all known *LMP2* genes, and it was used to screen the same library to isolate *LMP2* cDNA clones. The longest horn shark clone (1044 bp, with a 654-bp open reading frame, 304-bp 5' UTR, and 86-bp 3' UTR, Fig. 1A) was then used to screen a nurse shark spleen cDNA library. One full-length clone was sequenced and consisted of a 119-bp 5' UTR, 61-bp 3' UTR, and 654-bp open reading frame encoding 217 aa (Fig. 1A). The horn and nurse shark clones are 81% identical at the nucleotide level, and the deduced mature nurse shark protein sequence (start at +1 in Fig. 1A) is 87% identical to horn shark *LMP2*, 67–73% to *LMP2* of other species, and

54–62% to proteasome δ (δ throughout the text). Nurse and horn shark *LMP2* group with other species' *LMP2*, whereas *LMP2*/ δ (an intermediate found only in teleosts (14, 15, 40, 41)) and δ form separate clusters (Fig. 1B).

The nurse shark *LMP7-like* gene was described previously (31). To determine whether this gene is expressed by other elasmobranchs, we screened a horn shark spleen cDNA library and isolated the orthologous *LMP7-like*. Rather like the teleost *LMP2*/ δ , the sequence of the resulting horn shark clone forms a cluster with nurse shark *LMP7-like* in phylogenetic trees, which is equidistant from the *LMP7* and X clusters (Fig. 1C). This position of the *LMP7-like* cluster in the tree suggests that the gene arose not long after the divergence of *LMP7* and X, and indeed it may be present in all extant cartilaginous fish.

Linkage studies of *TAP*, *LMP*, and class I

In the family of 39 nurse sharks, 13 segregating groups (a–m) were identified previously from classical class I (*UAA*) RFLP typing (1). Now we have extended the linkage analysis for *LMP2*, *LMP7* (31), *LMP7-like* (31), *TAP1*, and *TAP2* (30). Representative Southern blots of 20 of these siblings are shown in Fig. 2, and summaries of all experiments are shown in Tables I and II. *TAP1* provided limited RFLP and formed only three groups (denoted a–c under the *TAP1* blot in Fig. 2, a = U/L, b = L, c = U; U and L designate the upper and lower bands, respectively, in Tables I and II), but each group matched perfectly to the class I groups. RFLP for *LMP2*, *LMP7* (*Eco*RI), and *TAP2* were found only for paternal MHC haplotypes within groups d, e, g, and h (marked with dashes at the side of each blot, and see Table II). One weakly hybridizing *LMP7* band was shown not to be MHC linked (*Bam*HI digest in Fig. 2).

On the *LMP7-like* blot, there are two sets of segregating loci (indicated as ① and ②). The three groups of ① bands (a = U/L, b = U, c = L, shown on the bottom of the blot) matched the class

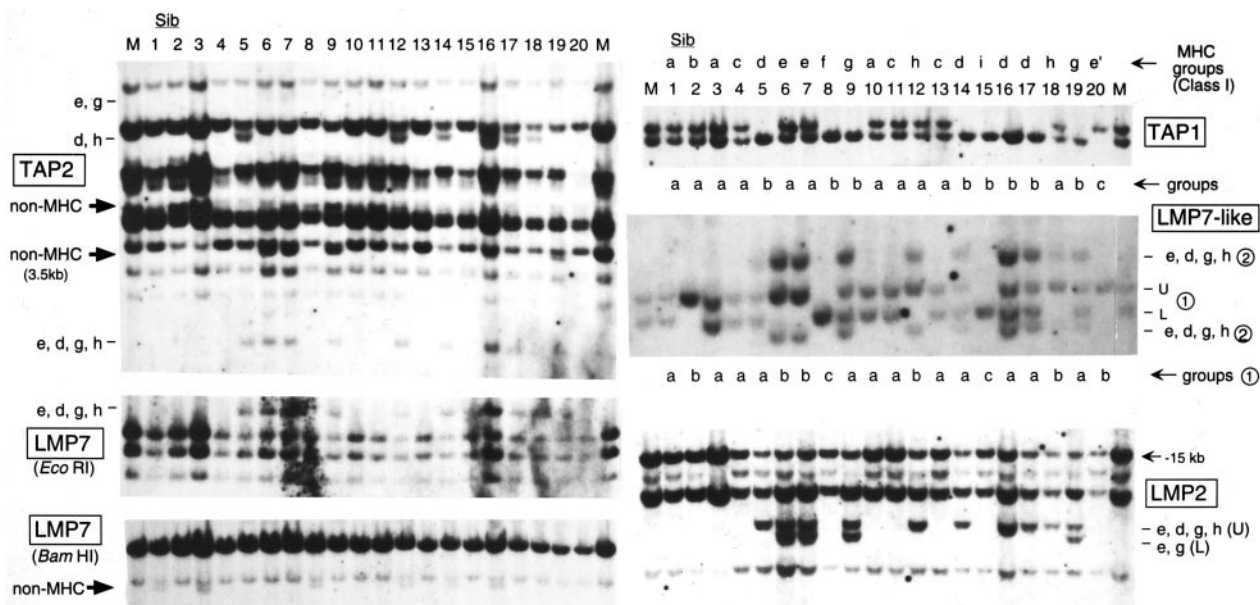


FIGURE 2. Linkage of *LMP7*, *LMP2*, *LMP7-like*, *TAP1*, and *TAP2* to the nurse shark MHC. Southern blot analyses with 20 siblings from the family with 39 offspring (1). RE were: *Bam*HI for *TAP1*; *Bam*HI/*Eco*RI for *LMP7-like*; *Pvu*II for *TAP2*; and *LMP7*, *Eco*RI, and *Bam*HI for *LMP7*. Lower case letters at the side of each blot indicate MHC groups, and large arrows indicate the non-MHC-linked bands. Two loci revealed on the *LMP7-like* blot are indicated as ① and ②, and groups are shown under the blot. Segregants sorted with previous *UAA* typing (1) are shown above the *TAP1* blot as MHC groups. *TAP1* groups are shown under *TAP1* blot. M, mother; Sib, siblings (numbers indicate individuals from Ref. 1). Band sizes are as follows: *TAP2*: e, g, 9 kb; d, h, 6.5 kb. Non-MHC: 5, 3.5 kb; e, d, g, h, 2.5 kb. *LMP7*: *Eco*RI, 3 kb; *Bam*HI, 9 kb. *TAP1*: 10, 9 kb. *LMP2*: e, d, g, h, 6.6 kb; e, g, 6 kb. *LMP7-like*: ①, 5.3 and 4.8 kb; ②, 6.3 and 4 kb.

Table I. Summary of maternal RFLP in mother and individual siblings

Siblings	Mother	1	2	3	4	5	6	7	8	9	10	11	12	13	14	15	16	17	18	19
Sex ^a	F	F	F	M	F	M	M	M	F	F	F	F	F	M	F	M	M	F	M	F
Yolk sac diameter (cm)		2.5	—	2.5	—	2.5	1.2	0.6	2.5	—	1.8	—	2.5	0.6	2.5	0.6	1.8	1.2	1.2	—
Body length (cm)		23	27	23	28	23	25.5	28	23	31	24	29	27	25.5	27	27	25.5	25.5	25.5	28
MHC group ^b		a	b	a	c	d	e	e	f	g	a	c	h	c	d	i	d	d	h	g
Maternal haplotype	m1/2	m1	m1	m1	m2	m2	m1	m1	m2	m2	m1	m2	m1	m2	m2	m2	m2	m2	m1	m2
UAA α1 ^b	L/U	L	L	L	U/L	U	L	L	U	U/L	L	U/L	L	U/L	L	U	U	U	L	U/L
TAP1	U/L	U/L	U/L	U/L	U/L	L	U/L	U/L	L	L	U/L	U/L	U/L	U/L	L	L	L	L	U/L	L
LMP7-like ①	U/L	U/L	U	U/L	U/L	U/L	U	U	U/L	U/L	U/L	U/L	U	U/L	U/L	U/L	U/L	U/L	U	U/L
TAP2 non-MHC (3.5 kb)	—	—	—	—	—	+	+	+	—	—	—	—	—	—	—	—	—	—	—	+
LMP7 non-MHC (BamHI)	—	+	—	+	—	—	—	+	—	+	—	—	+	—	+	—	+	—	—	—
UAA-NCI	U/L	L	U/L	U	U/L	U	L	U/L	L	U/L	U	L	U	U/L	U	L	L	U/L	U	L
	20	21	22	23	24	25	26	27	28	29	30	31	32	33	34	35	36	37	38	39
Sex ^a	F	F	M	M	M	M	F	M	M	F	F	M	F	F	F	F	F	M	F	F
Yolk sac diameter (cm)	3.1	0.6	0.6	—	0.8	0.6	1.8	1.8	0.6	1.2	—	0.3	0.6	0.6	2.5	2.5	0.6	0.3	0.3	0.3
Body length (cm)	24	27	27	28	25.5	28	24	24	25.5	25.5	28	28	25.5	25.5	23.5	25.5	25.5	27	25.5	28
MHC group ^b	e'	j	h	k	d	j	d	d	g'	d	i	j	e'	j	h	l	e'	m	h	j
Maternal haplotype	m1	m1	m1	m2	m2	m1	m2	m2	m2	m2	m1	m1	m1	m1	m1	m1	m1	m1	m1	m1
UAA α1 ^b	L	L	L	U	U	L	U	U	U/L	U	L	L	L	L	L	L	L	L	L	L
TAP1	U	U/L	U/L	L	L	U/L	L	L	U/L	L	L	U/L	U	U/L	U/L	U	U	U	U/L	U/L
LMP7-like ①	U	U/L	U	U/L	U/L	U/L	U/L	U/L	U/L	U/L	U/L	U/L	U	U/L	U	U/L	U	U	U	U/L
TAP2 non-MHC (3.5 kb)	—	—	+	+	—	—	+	—	—	—	—	—	—	—	+	+	—	—	+	—
LMP7 non-MHC (BamHI)	—	—	+	—	—	—	+	—	—	+	—	—	—	—	—	—	—	—	—	—
UAA-NCI	U/L	L	U	U/L	U/L	L	U	U	U/L	L	U/L	U/L	U/L	U/L	U/L	L	U/L	U	U	L

^a F, female; M, male.
^b Data taken from Ref. 1.

I MHC groups perfectly, and the presence vs absence of the ② set of bands precisely matched paternal haplotypes in groups d, e, g, and h; thus, both ① and ② LMP7-like genes are MHC linked, but only one set of bands is found in all haplotypes (and see later).

RFLP of all 39 siblings are summarized in Table I, in which results with the maternal UAA class I α1 domain are shown to illustrate the inheritance of maternal haplotypes identified definitively from siblings having distinctive paternal bands (1). The predicted maternal haplotype m1 was in 18 offspring and is L (UAA), U (TAP1), and U (LMP7-like ①); m2 was in 21 offspring and is U (UAA), L (TAP1), and L (LMP7-like ①); neither maternal haplotype contains the LMP7-like ② set of bands. Unfortunately, no LMP2, LMP7, or TAP2 RFLP were detected for the maternal haplotypes; nevertheless, as men-

tioned above, several paternal haplotypes had distinctive RFLP mapping to MHC for all of these genes.

Sorting out paternal haplotypes

Twelve paternal haplotypes were detected (p1 through p12), demonstrating that there were at least six fathers of this family (Table II). Besides the MHC-linked genes, we used the non-MHC-linked LMP7 RFLP (Fig. 2) and other nonlinked genes (data not shown), as well as body and yolk sac size, to determine haplotype pairs for each father. The p1 and p2 haplotypes had RFLP for the nonlinked LMP7, strongly suggesting that they were derived from one father (designated father 1, responsible for 17 of 39 offspring). In addition,

Table II. Summary of paternal RFLP and haplotypes

MHC Group ^a	UAA α1/Leader ^a	LMP2	LMP7 (EcoRI)	LMP7-like ②	TAP1	TAP2 (9, 6.5, 2.5 kb)	Paternal-Maternal Haplotype	No. of Siblings		Yolk Sac Average Diameter (cm)	Body Length Range (cm)	Predicted Father
								LMP7 non-MHC	Total			
a	UU/U	—	—	—	L	---	p1-m1	2	3	2.3	23–24	1
f	UU/U	—	—	—	L	---	p1-m2	1	1	2.5	23	1
d	LL/L	U	+	+	L	---	p2-m2	5	8	1.7	23–27	1
h	LL/L	U	+	+	L	---	p2-m1	3	5	1.4	23.5–27	1
i	L/L	—	—	—	L	---	p3-m2	0	2	0.3	27–28	2
j	L/L	—	—	—	L	---	p3-m1	0	5	0.5	25.5–28	2
e	L/U	U, L	+	+	L	---	p4-m1	0	2	0.9	25.5–28	3
g	L/U	U, L	+	+	L	---	p5-m2	0	2	0	28–31	
e'	L/U	—	—	—	U	---	p6-m1	0	3	1.4	24–25.5	
b	L/L ^b	—	—	—	L	---	p7-m1	0	1	0	27	
k	L/L	U, L	+	+	L	---	p8-m2	0	1	0	28	
l	ML/U	L	+	+	U	---	p9-m1	0	1	2.5	25.5	
m	L/U	L	—	—	U	---	p10-m1	0	1	0.3	27	
c	L/U	—	—	—	U	---	p11-m2	0	3	0.2	25.5–29	
g'	L/U	—	—	—	U	---	p12-m2	0	1	0.6	25.5	

^a Data taken from Ref. 1.
^b The group b α1/leader band migrates slightly faster than groups i and j.

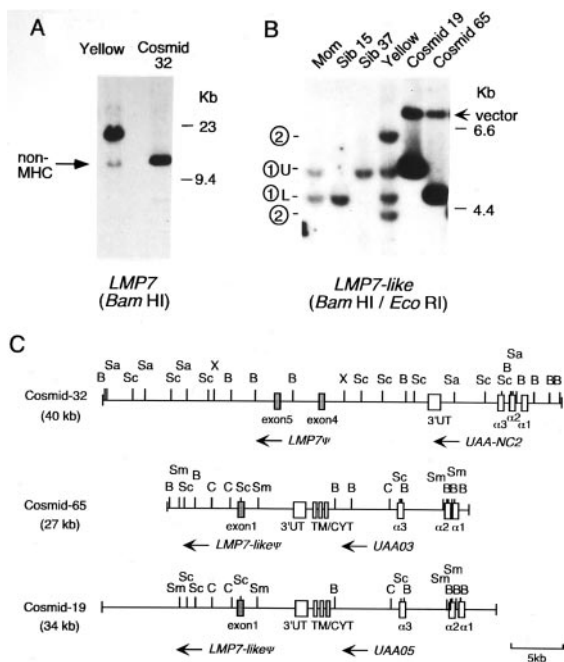


FIGURE 3. Analysis of class I⁺ nurse shark cosmid clones reveals closely linked inducible proteasome genes. **A**, Southern blot comparing shark genomic DNA and cosmid 32. A total of 5 μ g of *Bam*HI-digested DNA from shark Yellow and 50 ng of cosmid DNA were loaded side by side and hybridized with the full-length *LMP7* probe. Non-MHC-linked bands are indicated by arrows on the left. *Hind*III-digested λ DNA used as size standard is noted on the right. **B**, Southern blot comparing genomic DNA and cosmids 19 and 65. A total of 5 μ g of mother, siblings 15 and 37, shark Yellow genomic DNA, and 50 ng of cosmid DNA was loaded and hybridized with the full-length *LMP7-like* probe. *Bam*HI/*Eco*RI double digests were used to identify band ①. The 7-kb band in the cosmid DNA lanes was due to cross-hybridization to the SuperCos 1 vector (arrow). **C**, Restriction mapping of the class I⁺ cosmid clones. Insert sizes are shown in parentheses. Exons are shown as open boxes and identified with the exon number or domain names; mammalian numbering for the *LMP7* exons was used (58). The transcriptional orientation is shown with arrows, and the 5-kb scale is shown on the bottom right. The following RE were used for mapping. B, *Bam*HI; Sa, *Sac*I; Sc, *Scal*; X, *Xba*I; C, *Clal*; Sm, *Sma*I.

siblings belonging to the four groups, a, f, d, and h, were younger than the others, having larger yolk sacs and smaller body sizes. Unfortunately, no other haplotypes produced RFLP, or yolk sac and body size were not informative enough to discriminate the pairs (the e and g groups had the same paternal RFLP for all genes tested; however, yolk sac and body length in these two groups are distinct, suggesting different fathers, or the same father after a long refractory period). Interestingly, there is an allelic preference for father 1 since 76% (13 of 17) of the offspring have the p2 haplotype. We observed the same phenomenon in another family of 18 nurse shark pups: one haplotype was found in six siblings, and the other haplotype in a maximum of three pups (1).

Cosmid clones bearing class I and proteasome genes

A genomic cosmid library was prepared from shark Yellow to study physical linkage of the shark MHC genes. Three class I-positive clones (cosmids 19, 32, 65) were isolated that hybridized weakly to the full-length *LMP7* probe, with cosmid 32 displaying the highest intensity signal. Comparison of *Bam*HI digests of cosmid 32 and shark Yellow genomic DNA resulted in comigration of the strongly hybridizing band (the weakly hybridizing band is due to cross-hybridization to the vector) in the cosmid clone and the weakly hybridizing,

non-MHC-linked band in genomic DNA (Figs. 3A and 2, *LMP7 Bam*HI blot). Two *LMP7*-positive fragments were identified in cosmid 32, and sequence of the *Xba*I-*Bam*HI fragment revealed *LMP7* exon 4 (Fig. 3C, accession AF357928). Exon 5 was identified by Southern blotting and PCR with exon-specific primers and sequencing of the product (data not shown). An exon 6 (3' UTR)-specific probe did not hybridize to cosmid 32; furthermore, none of the fragments upstream from exon 4 hybridized with the full-length *LMP7* probe, and since no other non-MHC-linked bands were detected on the genomic Southern blot with the probe, this gene must be truncated. PCR was then performed with cosmid 32 as template and primers designed to amplify the *UAA* α 1 to α 3 domain coding regions. The sequence of this class I gene in cosmid 32 (*UAA-NC2*) has two stop codons in the exon encoding the α 2 domain and one in the α 3 domain-encoding exon (Fig. 4), and the intron length and sequence between the α 1 and α 2 domain-encoding exons are also not conserved compared with *UAA*, *UAA-NC2* having 326 bp rather than 108 bp in *UAA*. In summary, this cosmid clone contains a pseudogene related to class Ia and an incomplete *LMP7* gene, and this syntenic cluster is not linked to the functional MHC.

As mentioned above, we previously showed that there is only one class Ia gene per MHC haplotype in the nurse shark (1). Two cosmid clones (clones 19 and 65) were mapped (Fig. 3C) and shown to bear class Ia genes with sequences precisely matching the two expressed *UAA* cDNAs expressed by shark Yellow, the presumed alleles (*UAA03* and *UAA05*, Fig. 4). To identify the weakly hybridizing *LMP7* band in each cosmid, the 1.9-kb *Clal/Sma*I DNA fragment was subcloned, and the sequence revealed an *LMP7-like* exon 1 (accession AF357927). Double digestions of the cosmid clones with *Bam*HI and *Eco*RI demonstrated that the *LMP7-like* genes on cosmid clones 19 and 65 are the ①U and ①L bands, respectively, detected on the genomic blot in Fig. 2 (Fig. 3B). As expected from mapping of the cosmids (the polymorphic *Bam*HI site downstream of *LMP7-like* exon 1), shark Yellow, like the mother of the family shown in Fig. 2, has both bands (①U/L, Fig. 3B). The ② bands present in shark Yellow and in some of the fathers of the family encode at least one complete *LMP7-like* gene (there are additional ② bands not shown in Figs. 2 and 3B). As with the *LMP7* gene in cosmid 32, *LMP7-like* ① is a pseudogene, as only exon 1 was identified from sequencing analysis. In summary, the cosmid clones bearing the nurse shark MHC-linked classical class I genes were isolated, and such genes are closely linked to proteasome gene fragments.

To prove conclusively that some animals lacked a complete *LMP7-like* gene, we performed Northern blots with PBL RNA from eight siblings, three positive (groups d and h) and five negative for the ② set of bands (Fig. 2 and Table II), and with shark Yellow, which is also positive (Fig. 3B). Only those animals that were band ② positive on the Southern blot expressed *LMP7-like* transcripts, while all nine animals expressed *LMP7* (Fig. 5A).

To further investigate expression of the *LMP7* and *LMP7-like* genes, we performed Northern blots of 11 unrelated (to our knowledge) nurse sharks. As expected, the mother of the family lacking the ② set of *LMP7-like* bands detected by Southern blotting (Figs. 2 and 5B) did not express this gene (Fig. 5B). However, we were surprised to find that only four of the wild animals expressed *LMP7*, correlating with the presence of a 2.8-kb RFLP detected on the *LMP7* Southern blot (arrow in Fig. 5B). Thus, from the family study and examination of the wild animals, functional *LMP7* and *LMP7-like* behave like alleles (pseudoalleles), but *LMP7* and



FIGURE 4. Amino acid comparison of all nurse shark class I and human HLA-Cw3. GenBank accession numbers are: UAA01 (AF220063), UAA02 (AF220358), UAA09 (AF220359), UAA05 (AF357925), UAA03 (AF357924), UAA-NC1 (AF220360), UAA-NC2 from cosmid 32 (AF357926), UCA01 (AF028557), and HLA-cw3 (M84172). Dashes and dots show sequences identical to UAA01 and gaps, respectively. Predicted peptide-binding residues and NK cell receptor interaction sites (48) are indicated as *p* and *k* above and under the sequences, respectively. ⁷⁹R is in boldface, and the regions that differ dramatically between the two class I alleles are bracketed. Three stop codons in the cosmid 32 class I clone are shown as *.

LMP7-like gene fragments are nevertheless present in all haplotypes (Figs. 2, 5B, 9, and 10). The presence of two *LMP7* alleles with quite different sequences is reminiscent of the situation in *Xenopus*, in which ancient *LMP7* lineages have been detected (23) (see below).

Other nonclassical class I

In our previous study, we isolated a nonclassical class I gene (*UAA-NC1*, accession AF220360) by PCR with the primer set used to amplify *UAA* from genomic DNA (1). *UAA-NC1*-specific bands segregating in the family were detected (Fig. 6), but the *UAA-NC1* groups matched neither the MHC groups nor the non-MHC-linked *TAP2* and *LMP7* RFLP (Fig. 2 and Table I). To further understand the *UAA-NC1* protein structure, the nurse shark spleen cDNA library was screened, resulting in isolation of a 2072-bp clone. Amino acid identity to *Gici-UAA* is 81% in leader, 61% in $\alpha 1$, 75% in $\alpha 2$, and 89% in $\alpha 3$ domains (Fig. 4). There is a 186-bp short interspersed elements retrotransposon element in the 3' UTR not detected in *UAA*, and this element may have been involved in movement of *UAA-NC1* out of the MHC (42). The beginning of the transmembrane domain is highly conserved, but there is a 49-nt deletion compared with *UAA*, resulting in a downstream frameshift (*UAA-NC1a*, Fig. 7). In addition, a clone that was 3 nt shorter at the start of exon 6 was isolated from the same cDNA library (*UAA-NC1b*). Since the deletion occurred near the exon-intron boundary, PCR was performed to amplify the region encompassing exons 5 through 6 from genomic DNA. The 1-kb fragment so amplified revealed that all the missing nucleotides were indeed present in *UAA-NC1* genomic DNA, and the intron sequence was highly conserved between *UAA* and *UAA-NC1*. However, 3 nt were deleted from the middle of exon 5 (shown as a bracket above the sequence), and there are some nucleotide replacements (asterisks above the sequence) that might promote alternative splicing of *UAA-NC1* transcripts (Fig. 7).

UAA-NC1 is expressed at much lower levels than *UAA*: only 4 *UAA-NC1* clones (two of each splice variant) were isolated from library screenings compared with 42 *UAA* clones. The tissue distribution, however, is similar for both genes (Fig. 8). The 49-bp deletion resulting in premature termination in *UAA-NC1a* provides a transcript encoding the first 10 (of 24) hydrophobic aa in the putative transmembrane region. Thus, perhaps like proteins translated from differentially spliced class I transcripts in mammals (43, 44), different forms of the shark protein might be found.

Discussion

In this study, we show that *TAP1*, *TAP2*, *LMP7*, *LMP7-like*, and *LMP2* are linked to classical class I and class II genes in the nurse shark MHC. One set of haplotypes in 19 of 39 siblings has a functional, expressed *LMP7-like* gene and apparently more than one *LMP2* gene or gene fragment (Fig. 9). In groups d, e, g, h, k, l, and m, the *LMP2* U band seems to segregate with the very top band (~15 kb in Fig. 2, e.g., compare siblings 4 and 5 in which this uppermost band is approximately half of the intensity in sib 5), but the *LMP2* L band is found only in groups e, g, k, l, and m, suggesting the presence of additional genes or gene fragments. Whether there is a second expressed *LMP2* gene in elasmobranchs, and whether this gene is related to the novel teleost *LMP2* (*PMSB11*) gene (14, 15, 40, 41) requires further study.

The *LMP7-like* gene, previously identified in nurse sharks (31), now has been found in horn sharks as well, and, based on the phylogenetic tree analysis (Fig. 1C), this gene arose early in evolution and may be found in all elasmobranchs. Despite its apparent early emergence, a complete *LMP7-like* gene is not found in all haplotypes, and the functional gene is likely to be allelic with *LMP7* (Figs. 5, 9, and 10). It was already recognized that shark *LMP7* and *LMP7-like* proteins differ in residues near their respective catalytic sites (31), implying that the spectrum of peptides

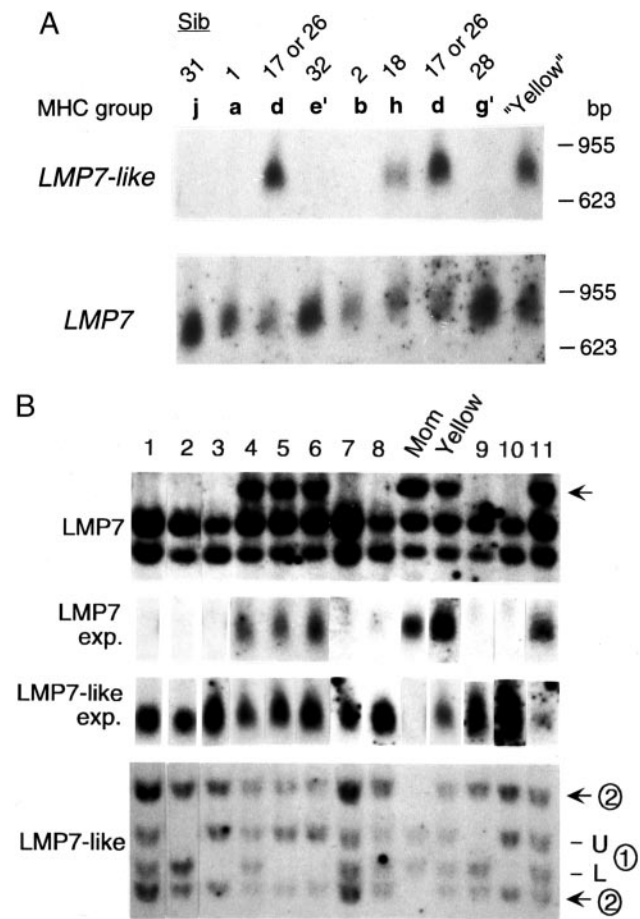


FIGURE 5. Northern blot analysis shows that some animals lack expression of either *LMP7* or *LMP7-like*. *A*, Total PBL RNA from eight siblings and shark Yellow were compared. The number of siblings and their MHC groups were shown above blots. RNA size marker (Promega, Madison, WI) is shown on the right. *B*, Southern and Northern blots from 11 wild nurse sharks (noted as 1–11 above the blots) as well as the mother of the family and shark Yellow with *LMP7* and *LMP7-like* probes. The *LMP7* Southern band correlating positively with *LMP7* expression is noted with an arrow, and the two *LMP7-like* loci are designated as ① and ② (see Fig. 2). *Bam*HI and *Eco*RI were used for the Southern blots, and band sizes were as follows: *LMP7*, 2.8, 2.5, and 2.3 kb; *LMP7-like* ①, 5.3 and 4.8 kb; ②, 6.3 and 4 kb.

FIGURE 6. *UAA-NC1* is not linked to the MHC. Southern blot analysis of 20 siblings in the family (same individuals in Fig. 2). RE used were: *Hind*III for *UAA α1* and leader and *Bam*HI for *UAA-NC1*. The probes and sibling numbers are indicated on the left side and above the blots, respectively. MHC and *UAA-NC1* groupings are indicated below and above the blots, respectively (and in Table I). The cross-hybridization of *UAA-NC1* to *UAA α1* of the d and h groups is indicated on the right side of the *UAA-NC1* blot. Band sizes are: *UAA α1*, d, h, ~14 kb; leader, ~4.5, 4 kb; *UAA-NC1*, ~13, 9.4 kb.

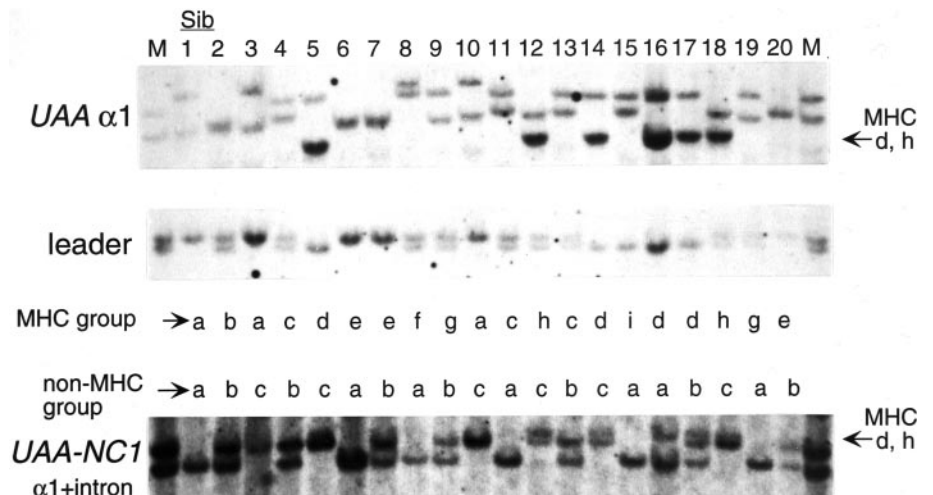


FIGURE 7. Alternative splice sites in the nonclassical class I gene *UAA-NC1*. The *UAA-NC1* genomic sequence was compared with two alternatively spliced cDNA clones (*UAA-NC1a* (AF357922) and *b* (AF357923)). Splice signal sites (GT...AG) are noted in boldface. Possible alternative splice sites are also marked in bold and underlined. Nucleotide differences between *UAA* and *UAA-NC1* are marked as * above the sequence. Polymorphic nucleotides are marked as # underneath the sequence. The classical class I allele *UAA03* was aligned above to highlight the 3-nt deletion (bracketed). The end of exon 5 and the beginning of exon 6 are indicated with arrows.

might be altered in animals that express both *LMP7* genes compared with those with only one. Fig. 11 displays stereoisomages of *LMP7*, *LMP7-like*, and the constitutive enzyme *LMPX*, modeled onto the crystal structure of yeast *LMPX* (45). Residues in red include the active site Thr-1, the obligatory (proton acceptor?) Lys³³, and Met⁴⁵, which is believed to coordinate chymotryptic-like cleavages (after hydrophobic residues) in this active site (46). Five residues in positions 28 (green), 29 (yellow), 30 (blue), 31 (black), and 32 (purple) (Ser-Gln-Thr-Val-Lys, Ser-Val-Asp-Ala-Asn, and Thr-Gln-Met-Phe-Lys in *LMPX*, *LMP7*, and *LMP7-like*, respectively) are diverse among the three proteins (31), and their positions relative to the active site are displayed. Note especially the proximity of the bulky Phe³¹ (black) to Met⁴⁵ in *LMP7-like* as compared with Ala³¹ in *LMP7* and Val³¹ in *LMPX*. We think that it would be surprising if these differences in the homologous catalytic subunits did not alter the spectrum of peptides produced by proteasomes containing them. Amazingly, for species separated from each other by ~500 million years, the two old allelic lineages of *Xenopus LMP7* genes also differ from each other primarily in

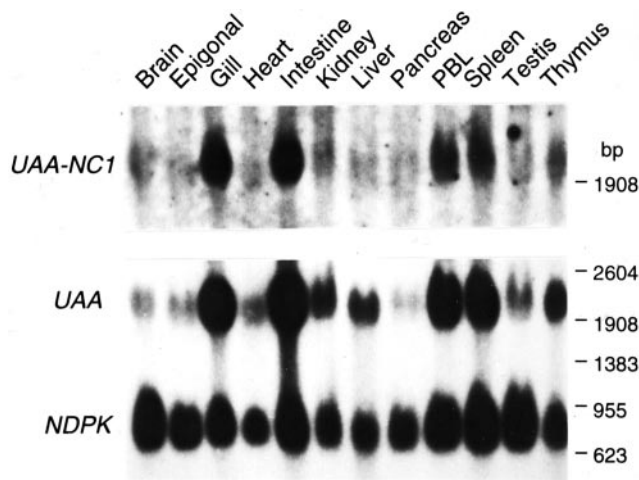


FIGURE 8. UAA and *UAA-NC1* expression in various nurse shark tissues. The ubiquitously expressed nucleoside diphosphate kinase was used as the positive control (39). Size markers shown on the right.

the vicinity of the catalytic site, one lineage having Phe³¹ and the other Ala³¹ (Ref. 23 and Y. Ohta, S. J. Powis, and M. F. Flajnik, manuscript in preparation). Although we are just beginning our analyses of the inducible proteasome genes in nonmammalian vertebrates, based upon 1) the very old gene/allelic lineages for several MHC genes (22–24, 47); 2) different proteasome genes, in particular MHC haplotypes (23; this study); and 3) the close linkage of proteasome genes to classical class I (6, 11, 13, 15, 17), one can propose that the generation of diverse sets of peptides by immunoproteasomes may be more crucial for adaptive responses in these nonmammalian species than in mice or humans.

In addition to having more genes or gene fragments, RFLP for *TAP2*, *LMP2*, *LMP7*, and *LMP7-like* were more apparent in the group d, e, g, h, k, and l paternal haplotypes. One possible explanation for these findings is that there are only two major nurse shark MHC allelic lineages and only one lineage generates RFLP with the restriction enzymes that we used. To date, our analysis has shown two distinct class Ia molecules in all nurse sharks tested that are very different at the C terminus of the $\alpha 1$ helix, one having ⁷⁷DILSK and the other ⁷⁷KTALE (bracketed in Fig. 4). This polymorphic region itself could be recognized by different sets of NK cell receptors (e.g., see Ref. 48 for NK receptor interactions with a human killer inhibitory receptor), or perhaps different arrays of peptides generated, depending upon the constellation of inherited proteasome genes, may alter the orientation of this class I helical

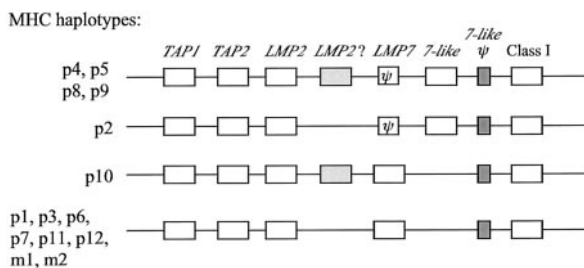


FIGURE 9. Hypothetical organization of nurse shark MHC haplotypes. All genes identified in this report and previous reports are shown in boxes, and *LMP7-like* and *LMP7* pseudogenes are shown as dark-shaded boxes and ψ , respectively. The second *LMP2* gene (fragment) is shown as a lightly shaded box. The order of genes and intergenic distances are not to scale (and are unknown). *TAP2*, *LMP7*, and *LMP2* were definitively shown to map to MHC only in haplotypes from the P2, P4, and P5 groups.

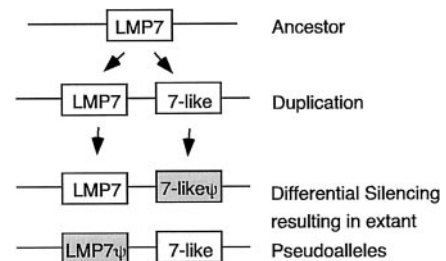


FIGURE 10. Postulated evolutionary progression of the pseudoallelic nature of *LMP7* and *LMP7-like*. This model is based upon the expression analyses (Fig. 5) and the fact that *LMP7* and *LMP7-like* gene fragments (i.e., incomplete genes) are detected in MHC haplotypes from which the functional, homologous gene is not present.

region recognized by TCR and/or NK cell receptors. It appears that the p1 and p2 haplotypes were inherited from one father, but the p2 haplotype was more successful than p1 in being perpetuated; the

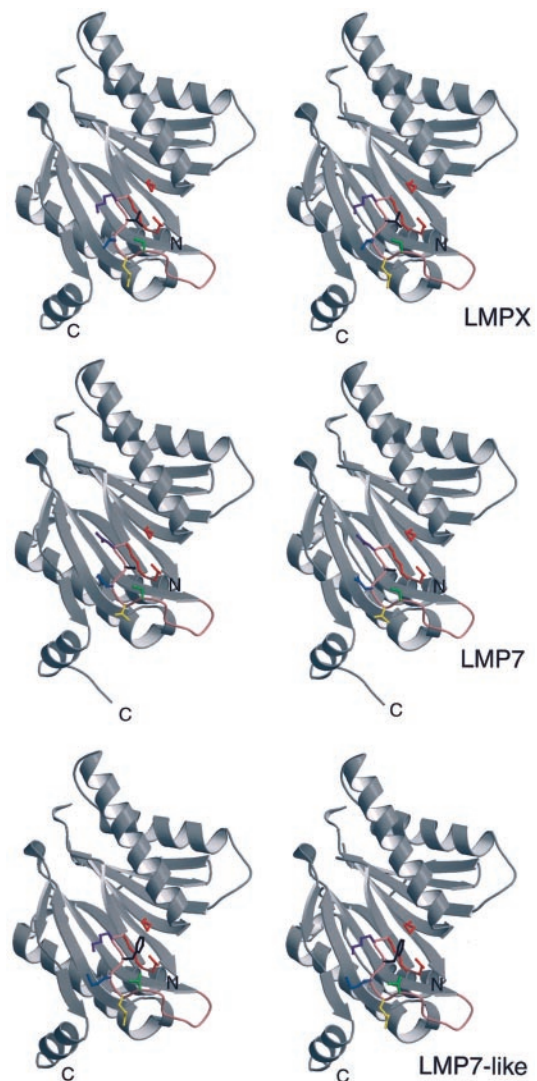


FIGURE 11. Stereoimage models of shark LMPX, LMP7, and LMP7-like proteins, based upon the crystal structure of the yeast orthologue of LMPX (45). PDB files were created in the program Homology Modeling (<http://www.embi.kun.nl:1100/WIWWWI/>). The models were generated in the three-dimensional imaging program MolScript (<http://www.avatar.se/molscript/>). See text for details of designations for the particular amino acid residues.

p2 haplotype in the d and h groups had RFLP for *LMP2*, *LMP7*, and *TAP2*, and contains a functional *LMP7-like* gene. Perhaps such a haplotype provided an advantage to offspring through expression of the *LMP7-like* gene, the particular class I allele, or other genes in the haplotype, so that survival was enhanced, but there are many other explanations for this finding that must be explored.

To date, four class I genes have been isolated from the nurse shark, one classical gene, and three nonclassical class I genes. The nonclassical *UCA* (formerly *Gici-11* (34)) was the first gene to be cloned, and it is expressed in a similar fashion to *UAA*; unfortunately, we have not been able to map this class I gene because of its low level of polymorphism. *UAA-NC1*, isolated by a PCR "accident" with primers designed for *UAA*, was shown in this study not to map to MHC, despite its high sequence similarity to *UAA*. Some *UAA* alleles are more similar to *UAA-NC1* than others (seen as cross-hybridization in groups d and h in Fig. 6), suggesting that *UAA-NC1* arose from one particular *UAA* lineage. The third nonclassical class I *UAA-NC2* was found in a cosmid clone bearing a truncated *LMP7* gene. This pseudogene complex was probably the result of recent duplication event, which indicates that MHC class Ia was closely linked to *LMP7* in the MHC. In fact, all of the class I genes found on the cosmid clones isolated to date are linked to an *LMP7* (or *7-like*) gene fragment. In the teleosts *Fugu* (13, 40) and zebrafish (15, 41), class Ia genes are also physically linked to *LMP7* genes (or gene fragments), suggesting that this close physical linkage is ancient.

Based upon Southern blotting analyses with a variety of probes under low stringency conditions, *UAA* may be the only class I gene linked to MHC. The same feature is found for the *Xenopus* MHC, in which only one class I gene of the classical type is MHC linked (49), while a large set of linked nonclassical class I genes is found in another gene complex half a chromosome away (50, 51). In chickens, two class I genes (one highly expressed) sandwich the *TAP1* and *TAP2* genes, and Kaufman and colleagues (11, 21, 52) have proposed that the tight linkage has allowed the particular class I and TAP alleles to coevolve; furthermore, like in frogs, several nonclassical chicken class I genes are found a great distance away from the true MHC on the same chromosome (53). In the banded houndshark *Triakis scyllium*, there are one or two classical class I genes depending on the haplotype examined (54), and the majority of teleost species examined rigorously (except cod (29) and cichlid (25, 26)) have relatively few class I genes in the class I region. Previously, others and we have suggested that close linkage of class I/proteasome/TAP genes constitutes a class I region, in which the genes involved in class I processing and presentation coevolve (10, 21). A large number of class I genes are not optimal in this situation, as this would probably result in rapid evolution of class I by gene conversion or other recombinations known to occur in mammals (55). The nurse shark seems to have carried this feature to the extreme, with even recently duplicated class I genes being exiled from the MHC proper. Thus, we predict that the shark class I genes will also be closely linked to and coevolving with TAP and proteasome genes in a true class I region, consistent with our preliminary analysis of the cosmid clones.

Other cosmid clones containing TAP and proteasome genes have been isolated, and we are currently sequencing and analyzing such clones (in collaboration with T. Shiina and H. Inoko, Tokai University, Isehara, Japan). Examination of these clones will be helpful in comparing with other species to infer the primordial MHC organization. For example, recent work has shown that the third inducible proteasome gene *MECL-1*, while not linked to the MHC in mammals, is found in the teleost MHC

class I region (13, 40, 56), consistent with predictions of large scale duplications being involved in the genesis of MHC (57); linkage of this gene, or other proteasome genes, to shark MHC will further test the duplication model. Since shark classical class II genes are linked to class I, it will be interesting as well to contrast the organization of all shark MHC regions with those of teleosts, in which the classical class II genes have been expelled to another region of the genome (14, 18). Finally, we may uncover genes in the shark MHC involved in Ag presentation that are no longer found in MHCs of more recently derived vertebrates.

Acknowledgments

We thank Robyn Stanfield for generating the proteasome models, Chris Rackley for helping us capture the nurse sharks, and Rebecca Lohr and Lori Clow for discussions and review of this work. We also are grateful to our colleagues Masaru Nonaka and Masanori Kasahara for being the first to uncover the interesting differences between the different proteasome subunits.

References

- Ohta, Y., K. Okamura, E. C. McKinney, S. Bartl, K. Hashimoto, and M. F. Flajnik. 2000. Primitive synteny of vertebrate major histocompatibility complex class I and class II genes. *Proc. Natl. Acad. Sci. USA* 97:4712.
- Driscoll, J., M. G. Brown, D. Finley, and J. J. Monaco. 1993. MHC-linked LMP gene products specifically alter peptidase activities of the proteasome. *Nature* 365:262.
- Rammensee, H. G., T. Friede, and S. Stevanovic. 1995. MHC ligands and peptide motifs: first listing. *Immunogenetics* 41:178.
- Kloetzel, P.-M. 2001. Antigen processing by the proteasome. *Nat. Rev. Mol. Cell Biol.* 2:179.
- Margulies, D. H. 1999. *Fundamental Immunology*. W. E. Paul, ed. Lippincott, Philadelphia, p. 263.
- Flajnik, M. F., Y. Ohta, C. Namikawa-Yamada, and M. Nonaka. 1999. Insight into the primordial MHC from studies in ectothermic vertebrates. *Immunol. Rev.* 167:59.
- Du Pasquier, L., and M. F. Flajnik. 1999. *Fundamental Immunology*. W. E. Paul, ed. Lippincott, Philadelphia, p. 605.
- The MHC Sequencing Consortium. 1999. Complete sequence and gene map of the human major histocompatibility complex. *Nature* 410:921.
- Takami, K., Z. Zaleska-Rutczynska, F. Figueroa, and J. Klein. 1997. Linkage of *LMP*, *TAP*, and *RING3* with MHC class I rather than class II genes in the zebrafish. *J. Immunol.* 159:6052.
- Nonaka, M., C. Namikawa, Y. Kato, M. Sasaki, L. Salter-Cid, and M. F. Flajnik. 1997. Major histocompatibility complex gene mapping in the amphibian *Xenopus* implies a primordial organization. *Proc. Natl. Acad. Sci. USA* 94:5789.
- Kaufman, J., S. Milne, W. F. Göbel, B. A. Walker, J. P. Jacob, C. Auffray, R. Zoorob, and S. Beck. 1999. The chicken B locus is a minimal essential major histocompatibility complex. *Nature* 401:923.
- Shiina, T., S. Shimizu, A. Oka, Y. Teraoka, T. Imanishi, T. Gojobori, K. Hanzawa, S. Watanabe, and H. Inoko. 1999. Gene organization of the quail major histocompatibility complex (MhcCoja) class I gene region. *Immunogenetics* 49:384.
- Clark, M. S., L. Shaw, A. Kelly, P. Snell, and G. Elgar. 2001. Characterization of the MHC class I region of the Japanese pufferfish (*Fugu rubripes*). *Immunogenetics* 52:174.
- Hansen, J. D., P. Strassburger, G. H. Thorgaard, W. P. Young, and L. Du Pasquier. 1999. Expression, linkage, and polymorphism of MHC-related genes in rainbow trout, *Oncorhynchus mykiss*. *J. Immunol.* 163:774.
- Michalova, V., B. W. Murray, H. Sultmann, and J. Klein. 2000. A contig map of the MHC class I genomic region in the zebrafish reveals ancient synteny. *J. Immunol.* 164:5296.
- Graser, R., V. Vincek, K. Takami, and J. Klein. 1998. Analysis of zebrafish MHC using BAC clones. *Immunogenetics* 47:318.
- Flajnik, M. F., and M. Kasahara. 2001. Comparative genomics of the MHC: glimpses into the evolution of the adaptive immune system. *Immunity* 15:351.
- Bingulac-Popovic, J., F. Figueroa, A. Sato, W. S. Talbot, S. L. Johnson, M. Gates, J. H. Postlethwait, and J. Klein. 1997. Mapping of MHC class I and class II regions to different linkage groups in the zebrafish *Danio rerio*. *Immunogenetics* 46:129.
- Powis, S. J., L. L. Young, E. Joly, P. J. Barker, L. Richardson, R. P. Brandt, C. J. Melief, J. C. Howard, and G. W. Butcher. 1996. The rat cim effect: TAP allele-dependent changes in a class I MHC anchor motif and evidence against C-terminal trimming of peptides in the ER. *Immunity* 4:159.
- Lobigs, M., A. Mullbacher, R. V. Blanden, G. J. Hämmerling, and F. Momburg. 1999. Antigen presentation in Syrian hamster cells: substrate selectivity of TAP controlled by polymorphic residues in TAP1 and differential requirements for loading of H2 class I molecules. *Immunogenetics* 49:931.
- Kaufman, J. 1999. Co-evolving genes in MHC haplotypes: the "rule" for non-mammalian vertebrates? *Immunogenetics* 50:228.

22. Flajnik, M. F., Y. Ohta, A. S. Greenberg, L. Salter-Cid, A. Carrizosa, L. Du Pasquier, and M. Kasahara. 1999. Two ancient allelic lineages at the single classical class I locus in the *Xenopus* MHC. *J. Immunol.* 163:3826.
23. Nonaka, M., C. Yamada-Namikawa, M. F. Flajnik, and L. Du Pasquier. 2000. Trans-species polymorphism of the major histocompatibility complex-encoded proteasome subunit LMP7 in an amphibian genus, *Xenopus*. *Immunogenetics* 51:186.
24. Ohta, Y., S. J. Powis, W. J. Coadwell, D. E. Haliniewski, Y. Liu, H. Li, and M. F. Flajnik. 1999. Identification and genetic mapping of *Xenopus* TAP2 genes. *Immunogenetics* 49:171.
25. Sato, A., D. Klein, H. Sultmann, F. Figueroa, C. O'huigin, and J. Klein. 1996. Class I MHC genes of cichlid fishes: identification, expression, and polymorphism. *Immunogenetics* 46:63.
26. Murray, B. W., P. Nilsson, Z. Zaleska-Rutczynska, H. Sultmann, and J. Klein. 2000. Linkage relationships and haplotype variation of the major histocompatibility complex class I A genes in the cichlid fish. *Oreochromis niloticus*. *Mar. Biotechnol.* 2:437.
27. Sammut, B., V. Laurens, and A. Tournefier. 1997. Isolation of MHC class I cDNAs from the axolotl *Ambystoma mexicanum*. *Immunogenetics* 45:285.
28. Sammut, B., L. Du Pasquier, P. Ducoroy, V. Laurens, A. Marcuz, and A. Tournefier. 1999. Axolotl MHC architecture and polymorphism. *Eur. J. Immunol.* 29:2897.
29. Persson, A. C., R. J. Stet, and L. Pilström. 1999. Characterization of MHC class I and $\beta(2)$ -microglobulin sequences in Atlantic cod reveals an unusually high number of expressed class I genes. *Immunogenetics* 50:49.
30. Ohta, Y., D. E. Haliniewski, J. D. Hansen, and M. F. Flajnik. 1999. Isolation of transporter associated with antigen processing genes, TAP1 and TAP2, from the horned shark *Heterodontus francisci*. *Immunogenetics* 49:981.
31. Kandil, E., C. Namikawa, M. Nonaka, A. Greenberg, M. F. Flajnik, T. Ishibashi, and M. Kasahara. 1996. Isolation of low molecular mass polypeptide complementary DNA clones from primitive vertebrates: implications for the origin of MHC class I-restricted antigen presentation. *J. Immunol.* 156:4245.
32. Castro, J. I. 2000. The biology of the nurse shark, *Ginglymostoma cirratum*, off the Florida east coast and the Bahama Islands. *Environ. Biol. Fishes* 58:1.
33. Nonaka, M., C. Namikawa-Yamada, M. Sasaki, L. Salter-Cid, and M. F. Flajnik. 1997. Evolution of proteasome subunits δ and LMP2: complementary DNA cloning and linkage analysis with MHC in lower vertebrates. *J. Immunol.* 159:734.
34. Bartl, S., M. A. Baish, M. F. Flajnik, and Y. Ohta. 1997. Identification of class I genes in cartilaginous fish, the most ancient group of vertebrates displaying an adaptive immune response. *J. Immunol.* 159:6096.
35. Rumfelt, L. L., D. Avila, M. Diaz, S. Bartl, E. C. McKinney, and M. F. Flajnik. 2001. A shark antibody heavy chain encoded by a nonsomatically rearranged VDJ is preferentially expressed in early development and is convergent with mammalian IgG. *Proc. Natl. Acad. Sci. USA* 98:1775.
36. Page, R. D. 1996. TreeView: an application to display phylogenetic trees on personal computers. *Comput. Appl. Biosci.* 12:357.
37. Wong, W. M., D. M. Y. Au, V. H. S. Lam, J. W. O. Tam, and L. Y. L. Cheng. 1990. A simplified and improved method for the efficient double-stranded sequencing of mini-prep plasmid DNA. *Nucleic Acids Res.* 18:5573.
38. Nizetic, D., R. Drmanac, and H. Lehrach. 1991. An improved bacterial colony lysis procedure enables direct DNA hybridization using short (10, 11 bases) oligonucleotides to cosmids. *Nucleic Acids Res.* 9:182.
39. Kasahara, M., C. Canel, E. C. McKinney, and M. F. Flajnik. 1991. Molecular cloning of nurse shark cDNAs with high sequence similarity to nucleotide diphosphate kinase genes. In *NATO ASI Series: Molecular Evolution of the Major Histocompatibility Complex*, Vol. H59. D. Klein and J. Klein, eds. Springer-Verlag, Berlin, p. 491.
40. Clark, M. S., P. Pontarotti, A. Gilles, A. Kelly, and G. Elgar. 2000. Identification and characterization of a β proteasome subunit cluster in the Japanese pufferfish (*Fugu rubripes*). *J. Immunol.* 165:4446.
41. Murray, B. W., H. Sultmann, and J. Klein. 1999. Analysis of a 26-kb region linked to the MHC in zebrafish: genomic organization of the proteasome component β /transporter associated with antigen processing-2 gene cluster and identification of five new proteasome β subunit genes. *J. Immunol.* 163:2657.
42. Ogiwara, I., M. Miya, K. Ohshima, and N. Okada. 1999. Retropositional parasitism of SINES on LINES: identification of SINES and LINES in elasmobranchs. *Mol. Biol. Evol.* 16:1238.
43. Kress, M., D. Cosman, G. Khoury, and G. Jay. 1983. Secretion of a transplantation-related antigen. *Cell* 34:189.
44. Carosella, E. D., P. Paul, P. Moreau, and N. Rouas-Freiss. 2000. HLA-G and HLA-E: fundamental and pathophysiological aspects. *Immunol. Today* 21:532.
45. Groll, M., L. Ditzel, D. Stock, M. Bochtler, H. D. Bartunik, and R. Huber. 1997. Structure of 20S proteasome from yeast at 2.4 angstrom resolution. *Nature* 386:463.
46. Bochtler, M., L. Ditzel, M. Groll, C. Hartmann, and R. Huber. 1999. The proteasome. *Annu. Rev. Biophys. Biomol. Struct.* 28:295.
47. Shum, B. P., L. Guethlein, L. R. Flodin, M. A. Adkison, R. P. Hedrick, R. B. Nehring, R. J. Stet, C. Secombes, and P. Parham. 2001. Modes of salmonid MHC class I and II evolution differ from the primate paradigm. *J. Immunol.* 166:3297.
48. Boyington, J. C., S. A. Motyka, P. Schuck, A. G. Brooks, and P. D. Sun. 2000. Crystal structure of an NK cell immunoglobulin-like receptor in complex with its class I MHC ligand. *Nature* 405:537.
49. Shum, B. P., D. Avila, L. Du Pasquier, M. Kasahara, and M. F. Flajnik. 1993. Isolation of a classical MHC class I cDNA from an amphibian: evidence for only one class I locus in the *Xenopus* MHC. *J. Immunol.* 151:5376.
50. Flajnik, M. F., M. Kasahara, B. P. Shum, L. Salter-Cid, E. Taylor, and L. Du Pasquier. 1993. A novel type of class I gene organization in vertebrates: a large family of non-MHC-linked class I genes is expressed at the RNA level in the amphibian *Xenopus*. *EMBO J.* 12:4386.
51. Courtet, M., M. F. Flajnik, and L. Du Pasquier. 2001. Major histocompatibility complex and immunoglobulin loci visualized by in situ hybridization on *Xenopus* chromosomes. *Dev. Comp. Immunol.* 25:149.
52. Kaufman, J., J. Jacob, I. Shaw, B. Walker, S. Milne, S. Beck, and J. Salomonsen. 1999. Gene organization determines evolution of function in the chicken MHC. *Immunol. Rev.* 167:101.
53. Miller, M. M., R. M. Goto, R. L. Taylor, R. Zoorob, C. Auffray, R. W. Briles, W. E. Briles, and S. E. Bloom. 1996. Assignment of Rfp-Y to the chicken MHC/NOR microchromosome and evidence for high-frequency recombination associated with the nucleolar organizer region. *Proc. Natl. Acad. Sci. USA* 93:3958.
54. Okamura, K., M. Ototake, T. Nakanishi, Y. Kurosawa, and K. Hashimoto. 1997. The most primitive vertebrate with jaws possess highly polymorphic MHC class I genes comparable to those of humans. *Immunity* 7:777.
55. Martinsohn, J. T., A. B. Sousa, L. A. Guethlein, and J. C. Howard. 1999. The gene conversion hypothesis of MHC evolution: a review. *Immunogenetics* 50:168.
56. Sultmann, H., B. W. Murray, and J. Klein. 2000. Identification of seven genes in the major histocompatibility complex class I region of the zebrafish. *Scand. J. Immunol.* 51:577.
57. Kasahara, M. 1999. The chromosomal duplication model of the major histocompatibility complex. *Immunol. Rev.* 167:17.
58. Meinhardt, T., U. Graf, and G. J. Hämmerling. 1993. Different genomic structure of mouse and human Lmp7 genes: characterization of MHC-encoded proteasome genes. *Immunogenetics* 38:373.