



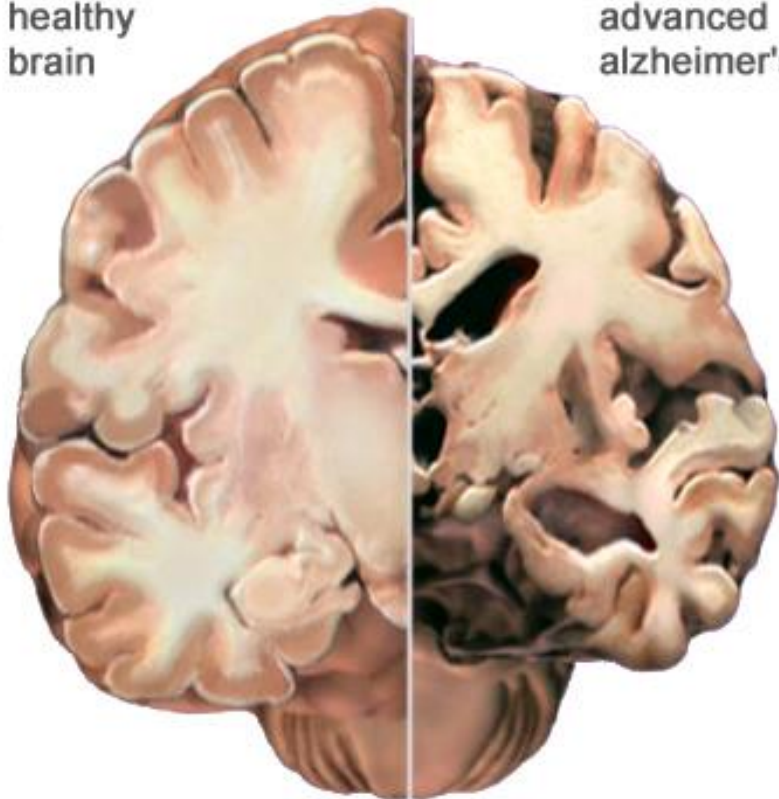
Cytoskeletal Disease

Alzheimer's Disease

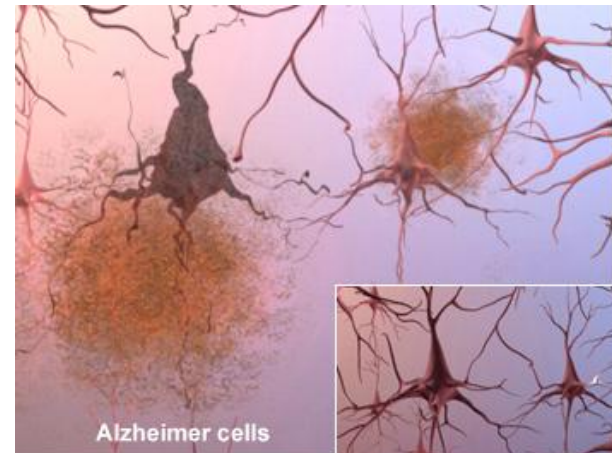
- Disease characteristics: **plaques** (amyloid beta peptide) and **tangles** (microtubule-associated protein, tau)
- Actin has recently been shown to contribute
- The destruction of nerve cells causes memory failure, personality changes, and issues with performing normal functions
- Alzheimer's is the leading cause of dementia
- Alzheimer's worsens over time, and there is no cure

Brain Changes

healthy brain

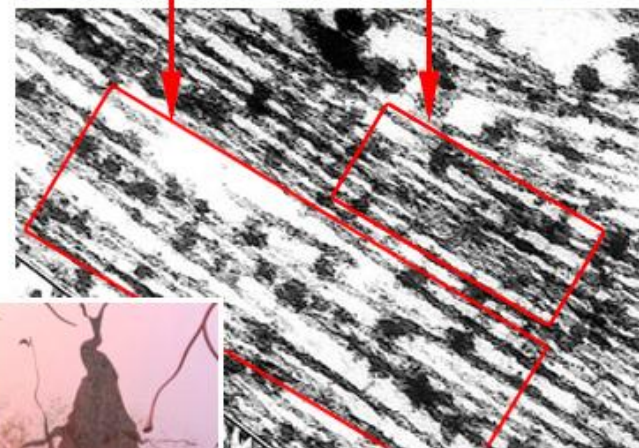


advanced alzheimer's



Tangles are forming

Healthy area



Ten Warning Signs

- 1. Memory loss that disrupts daily life
- 2. Challenges in planning or solving problems
- 3. Difficulty completing familiar tasks at home, work, or at leisure
- 4. Confusion with time or place
- 5. Trouble understanding visual images and spatial relationships
- 6. New problems in words in speaking or writing
- 7. Misplacing things and losing the ability to retrace steps
- 8. Decreased or poor judgement
- 9. Withdrawal from work or social activities
- 10. Changes in mood and personality

Alzheimer's Facts and Figures

- 6th leading cause of death in the United States
- Alzheimer's is the ONLY cause of death among the top 10 in America without any prevention
- More than 5 million Americans live with Alzheimer's
- An American develops the disease every 68 seconds
- In 2012, 15.4 million family and friends provided 17.5 billion hours of unpaid care
- In 2013, Alzheimer's cost the nation \$203 billion