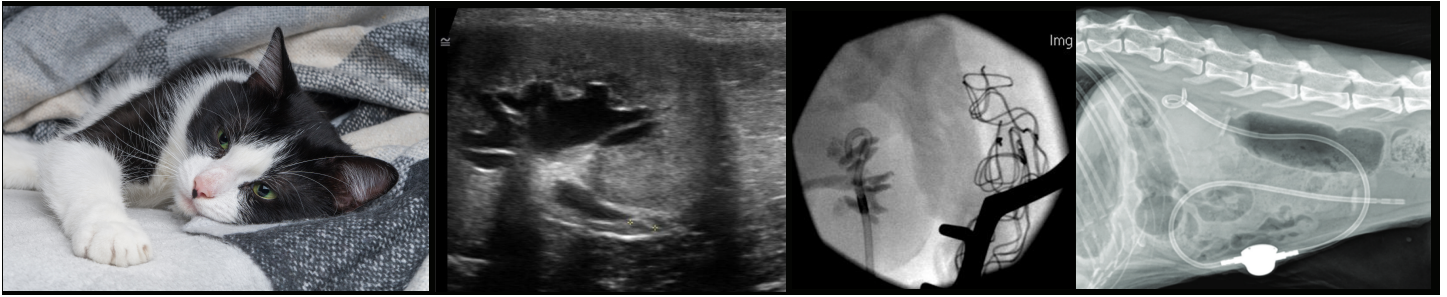


Subcutaneous ureteral bypass (SUB)



TEXAS A&M UNIVERSITY
Veterinary Medical
Teaching Hospital



Procedure: The SUB device is placed surgically, and provides a man-made pathway for urine to flow from the kidney to the bladder. A flushing port is placed under the skin on the abdomen. The device is regarded as permanent.

Indications: Ureteral obstruction due to stone, stricture, or tumor.

Patient eligibility (species, size, gender): Cats and dogs with ureteral obstruction. Ureteral stents are generally preferred to the SUB device in dogs.

Cost: \$5000-6000, depending on number of devices needed (i.e., if one or both kidneys are obstructed). Pre-operative evaluation (labwork, urine culture, etc.) and supportive care (fluids, antibiotics, etc) are often required and will incur additional costs. Total costs are often \$9000 - 12,000 for critically ill animals.

SUB devices require regular flushing to prevent complications. These visits require sedation and cost \$400-500.

Length of stay: At least 24 hours post-procedure; longer if medically necessary.

Complications: Obstruction of the SUB tubing due to bleeding, infection or encrusting is a major complications. In some cats, the tube in the bladder causes discomfort and bloody urine.

Anticipated outcome: A SUB device can reliably relieve acute and chronic ureteral obstruction and improve or stabilize function in the affected kidney(s). Patients with a history of stone formation are more likely to encrust the device.

Texas A&M Interventional Radiology & Endoscopy Service

Genna Atiee DVM, Diplomate ACVIM
Assistant Professor

Audrey Cook BVM&S, MRCVS
Diplomate ACVIM, ECVIM, ABVP (Feline)
Professor and Chief of Service

Michelle Hervey BS
Licensed Veterinary Technician

Questions?

Please contact

guidewire@cvm.tamu.edu

[Small Animal Teaching Hospital](#)

979.845.2351