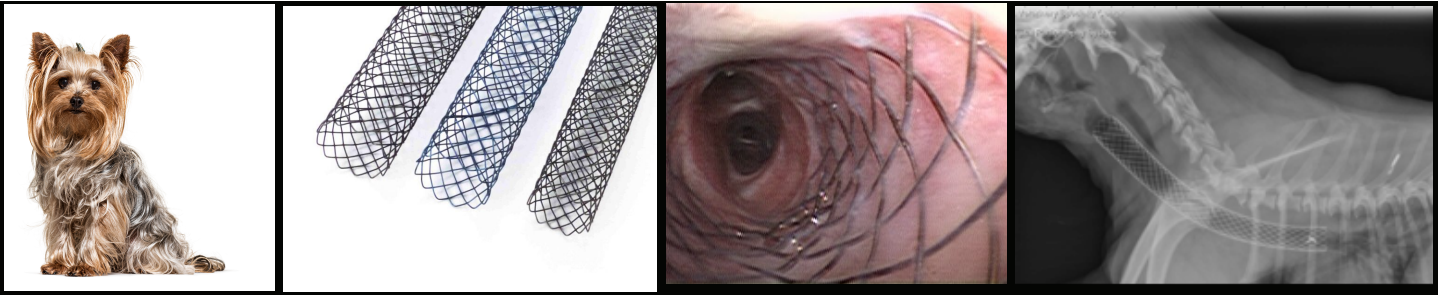


Tracheal stent placement



Procedure: This minimally invasive procedure is performed under anesthesia. The trachea is measured using CT, and then visualized using a flexible airway scope. Under fluoroscopic guidance, a metallic stent is placed in the trachea. This holds the trachea open and permits air to move down to the lungs. This stent can be removed within the first day or two, but soon becomes incorporated and fixed within the trachea.

Indications: Tracheal collapse or deformity. Stenting is generally reserved for dogs with persistent coughing or difficulty breathing despite diligent medical care.

Patient eligibility (species, size, gender): Any dog, any size.

Cost: \$8,000-9,000 for anesthesia, CT and stent placement. Pre-operative evaluation (e.g., labwork, echocardiogram) +/- supportive care (oxygen therapy) may be necessary and will incur additional costs.

Length of stay: 24 hours post-procedure to monitor for coughing.

Complications: Long term complications include stent fracture and/or occlusion with granulation tissue. Chronic or recurrent airway infection may also occur.

Anticipated outcome: This is a salvage procedure for patients with severe tracheal disease. Most dogs are markedly improved following stent placement, and survival times average 2-3 years. On-going medical therapy is necessary to prevent or manage coughing and/or infection.

Texas A&M Interventional Radiology & Endoscopy Service

Genna Atiee DVM, Diplomate ACVIM
Assistant Professor

Audrey Cook BVM&S, MRCVS
Diplomate ACVIM, ECVIM, ABVP (Feline)
Professor and Chief of Service

Questions?
Please contact
guidewire@cvm.tamu.edu

[Small Animal Hospital](#)

979-845-2351