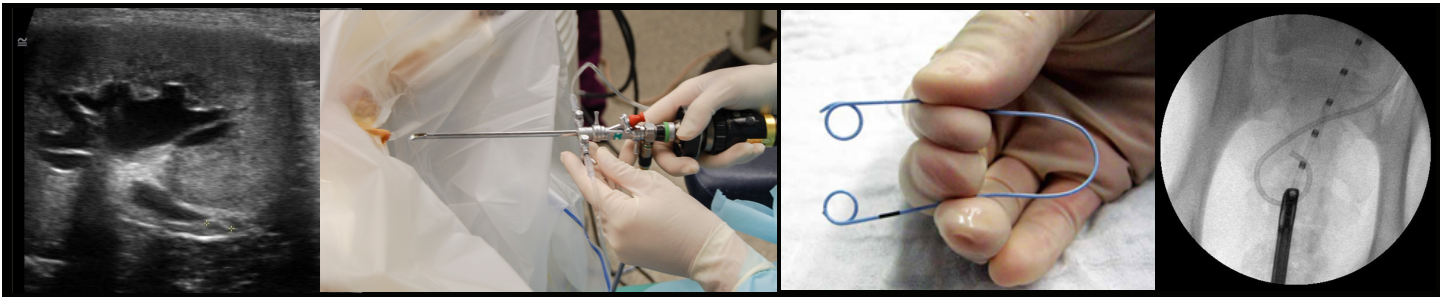


Endoscopic ureteral stent placement



**VETERINARY MEDICINE
& BIOMEDICAL SCIENCES**
TEXAS A&M UNIVERSITY



Procedure: This minimally invasive procedure is performed under anesthesia. Using a rigid cystoscope and fluoroscopic guidance, guidewire is directed from the bladder to the kidney. The stent is placed over the guidewire, with one 'pigtail' in the renal pelvis and one 'pigtail' in the bladder.

Indications: Ureteral obstruction due to stone, infection, or stricture.

Patient eligibility (species, size, gender): Female dogs must be able to accommodate a rigid cystoscope (generally >5 kg/11 lbs). In male dogs, a perineal approach may be used, or the stent may be placed surgically.

Cost: \$5,000 - 6,000. Pre-operative evaluation (labwork, etc.) and supportive care fluids, antibiotics, etc) may be needed and will incur additional costs. Total costs are often \$9000 - 12,000 for critically ill animals. Stent removal (if indicated) costs about \$1500.

Length of stay: Usually 48 hours; longer if medically necessary.

Complications: Stent migration or encrusting are the major complications. In some patients, we are unable to bypass the obstruction and have to consider a surgical approach.

Anticipated outcome: In most cases, the stent is well tolerated and is subsequently removed after several weeks. In dogs that form urinary stones, medical management is needed to prevent recurrent ureteral obstruction.

Texas A&M Interventional Radiology & Endoscopy Service

Genna Atiee DVM, Diplomate ACVIM
Assistant Professor

Audrey Cook BVM&S, MRCVS
Diplomate ACVIM, ECVIM, ABVP (Feline)
Professor and Chief of Service

Michelle Hervey BS
Licensed Veterinary Technician

Questions?

Please contact

guidewire@cvm.tamu.edu

[Small Animal Hospital](#)

979-845-2351