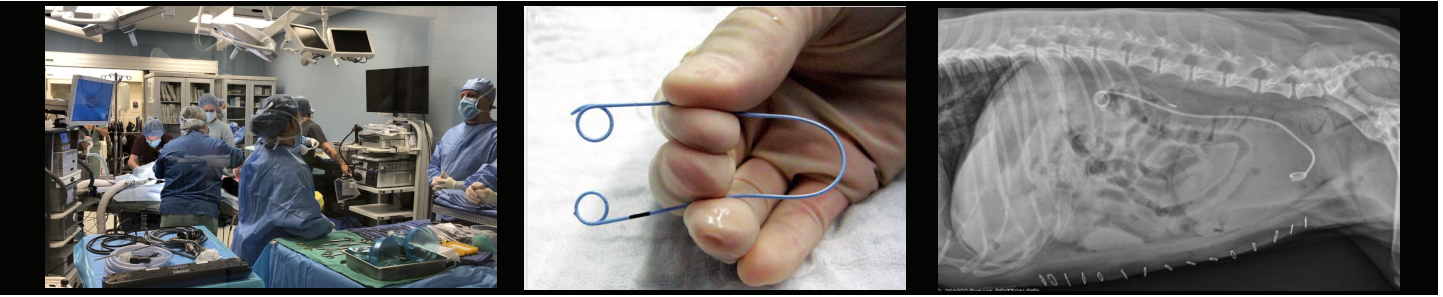


Surgical ureteral stent placement



Procedure: This procedure is performed under anesthesia. An incision is made into the abdomen to expose the bladder. This is then opened and a guidewire is directed up the affected ureter(s). A soft ureteral stent with a 'pigtail' at either end is then directed up the ureter. One of the 'pigtails' holds the top of the stent in the kidney and the other secures the end in the bladder. Urine can then flow through and around the stent.

Indication: Ureteral obstruction due to stones or stricture.

Patient eligibility (species, size, gender): Dogs of any gender or size; non-surgical approaches are used when possible, but a surgical approach is necessary in small females and male dogs of any size.

Cost: \$5,000-6,500 for stent and placement. Pre-operative labwork, imaging, and supportive care will incur additional costs. Total costs are often \$9000 - 12,000 for critically ill animals. Stent removal (if indicated) costs about \$1500.

Length of stay: At least 48 hours; longer if medically necessary.

Complications: Stent migration or encrusting are the major complications. A stent can limit our ability to eradicate infection in the urinary tract.

Anticipated outcome: In most cases, the stent is well tolerated and is subsequently removed after several weeks. In dogs that form urinary stones, medical management is needed to prevent recurrent ureteral obstruction.

Texas A&M Interventional Radiology & Endoscopy Service

Genna Atiee DVM, Diplomate ACVIM
Assistant Professor

Audrey Cook BVM&S, MRCVS
Diplomate ACVIM, ECVIM, ABVP (Feline)
Professor and Chief of Service

Michelle Hervey BS
Licensed Veterinary Technician

Questions?
Please contact
guidewire@cvm.tamu.edu

[Small Animal Hospital](#)

979-845-2351